

AirShopping 18.1

Web Services Implementation Guide

New Distribution Capability

Index

1	Interface Overview.....	4
1.1	Short Description.....	4
1.2	Current Scope.....	4
1.3	Out of scope.....	4
1.4	Prerequisites.....	5
2	Building a Query.....	5
2.1	Functional Description.....	5
2.2	Implementation.....	6
2.2.1	Payload Attributes.....	6
2.2.2	Point of sale.....	6
2.2.3	Party.....	6
2.2.3.1	Participant.....	6
2.2.3.2	Recipient.....	7
2.2.3.3	Sender.....	7
2.2.4	Passengers.....	7
2.2.5	Origin & Destination.....	9
2.2.6	Response Parameters.....	12
2.2.6.1	Currency.....	12
2.2.7	Shopping Criteria.....	13
2.2.7.1	CabinPreferences & FarePreferences.....	13
2.2.7.2	Corporate Account Code.....	14
2.2.7.3	Massive: Best Pricing Option.....	15
3	Receiving a Reply.....	15
3.1	Upsell Reply.....	15
3.1.1	Functional Description.....	15
3.1.2	Implementation.....	17
3.1.2.1	Payload Attributes.....	17
3.1.2.2	Warnings.....	17
3.1.2.3	Errors.....	18
3.1.2.4	OffersGroup.....	18
3.1.2.4.1	Air Item.....	22
3.1.2.4.1.1	Offer Item.....	22
3.1.2.4.1.2	Price.....	23
3.1.2.4.2	Fare Detail.....	25
3.1.2.4.2.1	Services.....	35
3.1.2.4.3	Ancillary Items.....	38
3.1.2.5	DataLists.....	40
3.1.2.5.1	BaggageAllowanceList.....	40
3.1.2.5.2	O&D (Origin and Destination) List.....	41
3.1.2.5.3	Passengers.....	42
3.1.2.5.4	Travel Solution list Per Bound.....	43

3.1.2.5.5	Flight Segment List	44
3.1.2.5.6	Penalty List	46
3.1.2.5.7	Price Class List	47
3.1.2.5.8	Service Definition List	47
3.1.2.5.9	Seat Profile List	50
3.1.2.6	MetaData	51
3.1.2.7	Shopping Response ID	51
3.2	Calendar Reply	51
3.2.1	Functional Description	51
3.2.2	Implementation	52
3.2.2.1	Payload Attributes	52
3.2.2.2	Warnings	52
3.2.2.3	Errors	53
3.2.2.4	OffersGroup	53
3.2.2.5	Metadata	53
4	Troubleshooting	54
4.1	Input Validation Errors	54
5	Detailed Use Cases	55
5.1	Use case 1	55
5.1.1	Use Case Description	55
5.1.2	Preconditions	55
5.1.3	Query	55
5.1.4	Reply	56
5.2	Use case 2	63
5.2.1	Use Case Description	63
5.2.2	Preconditions	64
5.2.3	Query	64
5.2.4	Reply	65
5.3	Use Case 3	79
5.3.1	Use Case Description	79
5.3.2	Preconditions	79
5.3.3	Query	79
5.3.4	Reply	81
5.4	Use case 5	88
5.4.1	Use Case Description	88
5.4.2	Preconditions	88
5.4.3	Query	88
5.4.4	Reply	89
5.5	Use case 6	99
5.5.1	Use Case Description	99
5.5.2	Preconditions	99
5.5.3	Query	99
5.5.4	Reply	100

1 Interface Overview

1.1 Short Description

AirShopping verb is called at the beginning of the shopping flow to retrieve the offers associated to an origin and destination pair with fixed dates.

The offers include a flight solution together with the ancillary services.

1.2 Current Scope

The AirShopping verb is used to search for flight solutions. The search can be performed for fixed dates.

Considered in the scope of current Altea NDC release:

- Mono and Multi passenger Itineraries
- One-Way and Round-Trip Flights
- Open Jaws - request with two bounds where origin and destination are not the same point in both directions
- Complex itineraries - request with requested segments greater than 2 and less than or equal to 4
- Upsell requests
- Airline marketed and operated flights, along with interline partner solutions, depending on the Altea NDC configuration
- Ancillary Services.
- Account code in AirshoppingRQ supported
- OWD mode in AirshoppingRQ supported, prices split per bound expected. OWD mode requires specific set up.
- Calendar request supported - the ability to search for a range of dates
- Public fare and private fares (cat 15) are supported.
- Fare By Rule (cat 25) are supported like Dual Inventory Fares (DIF) and booking code exception for example.
- Negotiated fares (cat35) are partially supported (when selling amount is equal to the net amount).

1.3 Out of scope

List the limitations of the verb.

Not supported:

- OWC mode
- Round trip would be considered just in case airport code of the departure is matched to the airport code of the arrival. If codes are not the same even in case these are airports of the same city then this journey would be considered as Open Jaw and might be rejected depending on the allowance of the airline to perform Open Jaw requests.
- Group PTC - the ability to request availability for more than 9 passengers

- Dual Flow - possibility to make simultaneous upsell and calendar request
- The following Negotiated fares (cat35) are not supported: Fares with a tour code, IT/BT fares, Fares when selling amount is different from net amount (Travel Agency markup)

Following functionalities are not supported in Calendar request:

- Ancillary Services

1.4 Prerequisites

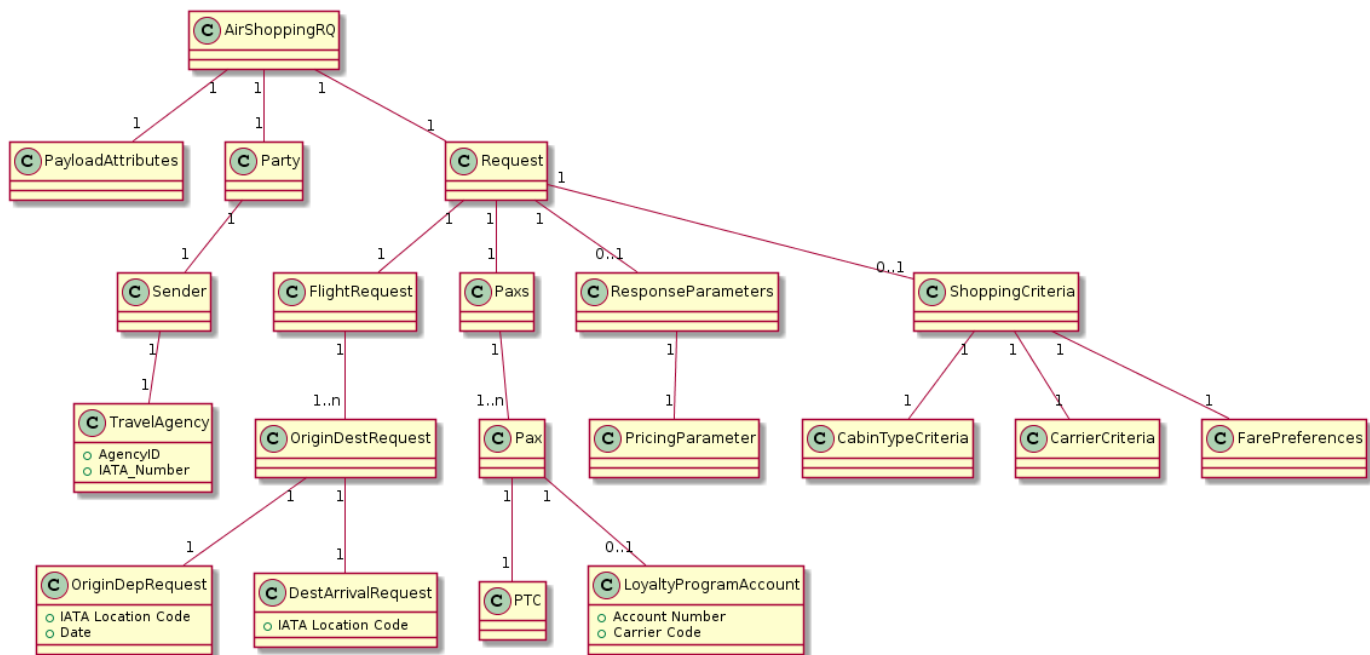
- Altea NDC functionalities shall be activated for the targeted airline
- The required FareFamilies must be filed in Amadeus database via Farexpert or synchronized from ATPCo fillings
- The Airshopping request is received with valid XML format (defined in XSD)
- The required Ancillary services must be filed in Amadeus database via Farexpert or synchronized from ATPCo fillings
- The Ancillary Services prices filed in ATPCo must be coherent client's Fare Families.
- AAAS shall be activated for the targeted airline

2 Building a Query

2.1 Functional Description

AirShopping request message provides information driving the search, specifying the core query and options.

Class diagram describing the *AirShoppingRQ* xml:



2.2 Implementation

This section describes the implementation of the input message.

2.2.1 Payload Attributes

Designation	Repetition	Status	Location	Comments
Message version	1	M	/AirShoppingRQ/PayloadAttributes/Version	Set to the NDC schema version to which the message complies to.

```
<AirShoppingRQ>
  <PayloadAttributes>
    <Version>18.1</Version>
  </PayloadAttributes>
</AirShoppingRQ>
```

2.2.2 Point of sale

The point of sale structure describe the country code as well as the device used to perform the booking / payment.

Point of sale Designation	Repetition	Status	Location	Comments
Country Code	1	M	AirShoppingRQ/PointOfSale/Country/CountryCode	Country code from where the message is sent

```
<AirShoppingRQ>
  <PointOfSale>
    <Country>
      <CountryCode>FR</CountryCode>
    </Country>
  </PointOfSale>
</AirShoppingRQ>
```

2.2.3 Party

NDC Message/ Transaction Party(s) information.

2.2.3.1 Participant

Participant section is used to identify the partner. Either SystemID or AggregatorIS should be sent.

Participant Designation	Repetition	Status	Location	Comments
Enabled System ID	1	O	Party/Participant/EnabledSystem/SystemID	System ID of the

				partner, when not an aggregator.
Aggregator ID	1	O	Party/Participant/Aggregator/AggregatorID	Aggregator ID.

2.2.3.2 Recipient

Recipient section contains the airline targetted by the partner.

RecipientDesignation	Repetition	Status	Location	Comments
Airline targetted	1	O	Party/Recipient/ORR/AirlineDesigCode	2-letters airline code

2.2.3.3 Sender

SenderDesignation	Repetition	Status	Location	Comments
IATA number	1	O	Party/Sender/TravelAgency/IATA_Number	8-digit IATA number. Used for revenue attribution. Ex: 12345678
AgencyID	1	M	Party/Sender/TravelAgency/AgencyID	9-character Travel Agency ID. Ex: AAAYY1234.

Example:

```
<Party>
  <Sender>
    <TravelAgency>
      <IATA_Number>12345678</IATA_Number>
      <AgencyID>NCE6X0100</AgencyID>
    </TravelAgency>
  </Sender>
</Party>
```

2.2.4 Passengers

This structure provides the information on how many travellers of a given PTC are to be considered for the search.

Designation	Repetition	Status	Location	Comments
Passengers	0..1	O	/Paxs(#)	List of Passengers. If not present, one ADT is considered by default.

Passenger	1..14	M	#/Pax	Each Passenger has a separate element.
Passenger ID	1	M	#/Pax/PaxID	Uniquely identifies a Passenger.
Passenger type	0..1	O	#/Pax/PTC	Describes the type of the passenger. Possible values are: ADT, CHD, INF. When not present, one ADT is considered by default.
Loyalty Program Account	0..1	O	#/Pax/LoyaltyProgramAccount	Describes the Loyalty Program of the passenger.
Loyalty Program Account number	0..1	O	#/Pax/LoyaltyProgramAccount/Accountnumber	Describes the identifier of the Loyalty Program Account of the passenger.
Loyalty Program Provider	0..1	O	#/Pax/LoyaltyProgramAccount/Carrier	Describes the airline which provides the Loyalty Program to the passenger.

```

<Paxs>
  <Pax>
    <PaxID>ADT1</PaxID>
    <PTC>ADT</PTC>
  </Pax>
  <Pax>
    <PaxID>ADT2</PaxID>
    <PTC>ADT</PTC>
    <LoyaltyProgramAccount>
      <AccountNumber>loyal123</AccountNumber>
      <Carrier>
        <AirlineDesigCode>6X</AirlineDesigCode>
      </Carrier>
    </LoyaltyProgramAccount>
  </Pax>
  <Pax>
    <PaxID>INF1</PaxID>
    <PTC>INF</PTC>
  </Pax>
</Paxs>

```

Default behavior: If no passenger information is provided, the system considers 1 adult by default.

Limitations: The number of passenger is limited to 9, it can be mix of adult and children. AirShopping only accept one traveler with loyalty program information.

Infants can not be requested with no presence of adult. The number of infants can not exceed the total number of adults.

2.2.5 Origin & Destination

This section describes on which itinerary (from/to which location) and dates the client is looking for travel solutions.

The departure/arrival location can be either Airport code or City code. If Airport code is requested, the searching focuses on the specific search. However, if City code is requested, the system searches among all available airports of the city. Both are located in the same field.

If the airline allows intra-city connections, then search for a given airport in input might return results for the other city airports.

Designation	Repetitions	Status	Location	Comments
OriginDestinations	1..4	M	/FlightRequest/OriginDestRequest(#)	List of Origin and Destinations. We will have exactly one occurrence of OriginDestRequest in case of a simple one way, two instances in case of a round trip and more in case of complex itinerary
Origin Location	1	M	#/OriginDepRequest/IATA_LocationCode	Indicates the IATA airport / location code of the origin of travel.
Origin Date	1	M	#/OriginDepRequest/Date	Indicates the departure date at origin.
Origin Time	1	O	#/OriginDepRequest/Time	Indicates the time of departure from the origin. This will be the local time.
Time Before Measure	1	O	#/OriginDepRequest/TimeBeforeMeasure	This negated from the origin time which is taken as a reference; specify the time window for filtering the flight solutions to be proposed in the offers. This will be in hours. Note - Filtering of flight solution may differ by having a larger

				window.
Time After Measure	1	O	#/OriginDepRequest/TimeAfterMeasure	This added to the origin time which is taken as a reference specify the time window for filtering the flight solutions to be proposed in the offers. This will be in hours. Note - Filtering of flight solution may differ by having a larger window than requested.
Destination Location	1	M	#/DestArrivalRequest/IATA_LocationCode	Indicates the IATA airport / location code of the destination of travel.
Arrival Date	1	M	#/DestArrivalRequest/Date	Indicates the arrival date at destination.
Arrival Time	1	O	#/DestArrivalRequest/Time	Indicates the time of arrival at the destination. This will be the local time.
Time Before Measure	1	O	#/DestArrivalRequest/TimeBeforeMeasure	This negated from the arrival time which is taken as a reference specify the time window for filtering the flight solutions to be proposed in the offers. This will be in hours. Note - Filtering of flight solution may differ by having a larger window than requested.
Time After Measure	1	O	#/DestArrivalRequest/TimeAfterMeasure	This added to the arrival time which is taken as a reference; specify the time window for filtering the flight solutions to be proposed in the offers. This will be

in hours. Note - Filtering of flight solution may differ by having a larger window.

```
<FlightRequest>
  <OriginDestRequest>
    <DestArrivalRequest>
      <IATA_LocationCode>JFK</IATA_LocationCode>
      <Date>2016-10-10</Date>12:00:00
    <TimeAfterMeasure>2</TimeAfterMeasure>
    <TimeBeforeMeasure>1</TimeBeforeMeasure>
  </DestArrivalRequest>
  <OriginDepRequest>
    <IATA_LocationCode>CDG</IATA_LocationCode>
  </OriginDepRequest>
</OriginDestRequest>
</FlightRequest>
```

On top of the specific departure date, the client can specify a date range, by defining how many days before and days after is he willing to travel. The maximum date range the user is able to request is +/-7 days (date range equals to 15 days) for OneWay and +/-3 days (date range equals to 7 days) for each bound in RoundTrip requests.

Designation	Repetition	Status	Location	Comments
OriginDestinations	1..2	M	/FlightRequest/OriginDestRequest(#)	List of Origin and Destinations.
Origin Location	1	M	#/OriginDepRequest/IATA_LocationCode	Indicates the origin location.
Origin Date	1	M	#/OriginDepRequest/Date	Indicates the departure date of the origin.
Arrival Location	1	M	#/DestArrivalRequest/IATA_LocationCode	Indicates the destination location.
Specific to Calendar				
Number of days before	1	O	#/CalendarDateRequest/DaysBeforeNumber	Date flexibility. Defines maximum how many days before the specified departure date is the traveler willing to travel.

Number of days after	1	O	#/CalendarDateRequest/DaysAfterNumber	Date flexibility. Defines maximum how many days after the specified departure date is the traveler willing to travel.
----------------------	---	---	---------------------------------------	---

```
<FlightRequest>
  <OriginDestRequest>
    <DestArrivalRequest>
      <IATA_LocationCode>JFK</IATA_LocationCode>
      <Date>2016-10-10</Date>
    </DestArrivalRequest>
    <OriginDepRequest>
      <IATA_LocationCode>CDG</IATA_LocationCode>
    </OriginDepRequest>
    <CalendarDateRequest>
      <DaysBeforeNumber>3</DaysBeforeNumber>
      <DaysAfterNumber>3</DaysAfterNumber>
    </CalendarDateRequest>
  </OriginDestRequest>
</FlightRequest>
```

2.2.6 Response Parameters

2.2.6.1 Currency

Currency processed in central system is by default decided by the Point of Sale (POS) corresponding to the requested Office ID. Client is able to override the default currency with a specific one when it is required.

Designation	Repetition	Status	Location	Comments
Currency	0..1	O	/ResponseParametersType/PricingParameter/OverrideCurCode/	Currency code to be applied during shopping process, such as USD, EUR, etc.

```
<ResponseParameters>
  <PricingParameter>
    <OverrideCurCode>USD</OverrideCurCode>
  </PricingParameter>
</ResponseParameters>
```

2.2.7 Shopping Criteria

2.2.7.1 CabinPreferences & FarePreferences

Either CabinPreferences or FarePreferences must be requested via input in order to target a dedicated CFF (Commercial Fare Family), which is a set of Fare Families. The system can accept up to 6 CFFs.

It is not supposed to request both in the same input. If so, the FarePreferences will be ignored and only CabinPreferences is taken into account.

- **CabinPreferences:** One or several Cabins can be specified in the request. A list of Commercial Fare Families (CFF) will be matched to the requested cabin according to Cabin-CFF mapping confirmed by the airline. Thus, all the Fare Families defined for the requested CFF will be targeted in the process.

-> The total number of mapped CFF must not exceed 6.

- **FarePreferences:** One or several CFFs can be requested per input via FarePreferences. This limit is controlled by a fare search parameter, which is usually set to 6 by default.

Designation	Repetition	Status	Location	Comments
Cabin	1..2	M(Can't be requested with CFF in the same time)	/ShoppingCriteria/CabinTypeCriteria/CabinTypeName	Cabin Name such as ECO, BUS, etc. to target different sets of fare families.
CFF	1..6	M(Can't be requested with Cabin in the same time)	/ShoppingCriteria/FarePreferences/FareCodes/Code/Code	CFF code such as CFFECO, CFFFLEX etc. to target different fare families. In case of multiple CFF, they must be separated by space.

```

<ShoppingCriteria>
  <CabinTypeCriteria>
    <CabinTypeName>ECO</CabinTypeName>
  </CabinTypeCriteria>
</CabinTypeCriteria>

```

```

        <CabinTypeName>BUS</CabinTypeName>
    </CabinTypeCriteria>
</ShoppingCriteria>
    
```

```

    <FarePreferences>
        <FareCodes>
            <Code>
                <Code>NDCSEATW</Code>
            </Code>
        </FareCodes>
    </FarePreferences>
    
```

2.2.7.2 Corporate Account Code

Corporate account code (aka Corporate code) can be sent in request in order to search for special fares provided only for certain corporate members. Corporate code is applied on the whole request.

Designation	Repetition	Status	Location	Comments
ProgramCriteria	0..1	O	/ShoppingCriteria/ProgramCriteria/ProgramAccount (#)	
Corporate code	0..6	O	#/AccountID	Corporate code is alphanumeric . It is used to search for special fares provided only for certain corporate members.
Corporate program owner	0..1	O	#/ProgramOwner/Carrier/AirlineDesignCode	Indicates the owner airline of the corporate code.

```

<ns:ProgramCriteria>
  <ns:ProgramAccount>
    <ns:AccountID>000001</ns:AccountID>
  </ns:ProgramAccount>
  <ns:ProgramAccount>
    <ns:AccountID>000002</ns:AccountID>
  </ns:ProgramAccount>
  <ns:ProgramOwner>
    <ns:Carrier>
      <ns:AirlineDesignCode>6X</ns:AirlineDesignCode>
    </ns:Carrier>
  </ns:ProgramOwner>
</ns:ProgramCriteria>
    
```

2.2.7.3 Massive: Best Pricing Option

Client is able to set the BestPricingOption CHJ which will propose only Cheapest per Journey. By setting CHJ option, Amadeus Shopping Engine is going to return only the cheapest offer for each travel solution of the journey and there is no distribution of offers on Fare Families because only one fare family (the cheapest one) will be proposed for each travel solution. The massive option is driven by internal settings options on 1A side, and can be defined as default behavior for the integration with a Partner

Limitations - Not compliant with date range / calendar like requests.

Account code	Designation	Repetition	Status	Location	Comments
CHJ option	0..1	O	AirShoppingRQ/Request/ShoppingCriteria/PricingMethodCriteria/BestPricingOption		

Example:

```
<ShoppingCriteria>
  <FarePreferences>
    <FareCodes>
      <Code>
        <Code>CFFECO1</Code>
      </Code>
    </FareCodes>
  </FarePreferences>
  <PricingMethodCriteria>
    <BestPricingOption>CHJ</BestPricingOption>
  </PricingMethodCriteria>
</ShoppingCriteria>
```

3 Receiving a Reply

3.1 Upsell Reply

3.1.1 Functional Description

AirShopping response provides a description of the available offers satisfying the search criteria with fixed dates.

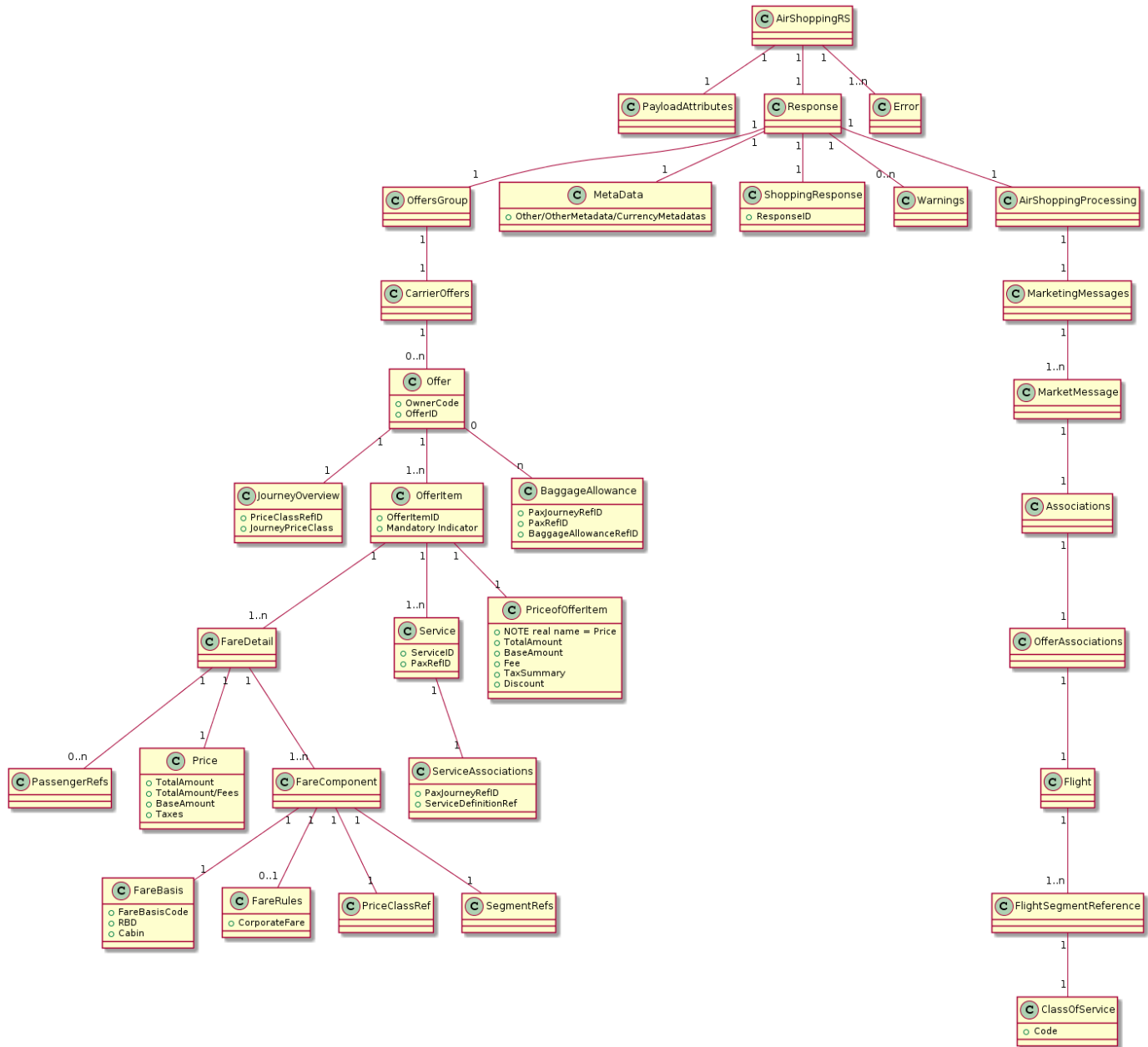
AirShopping provides the following information:

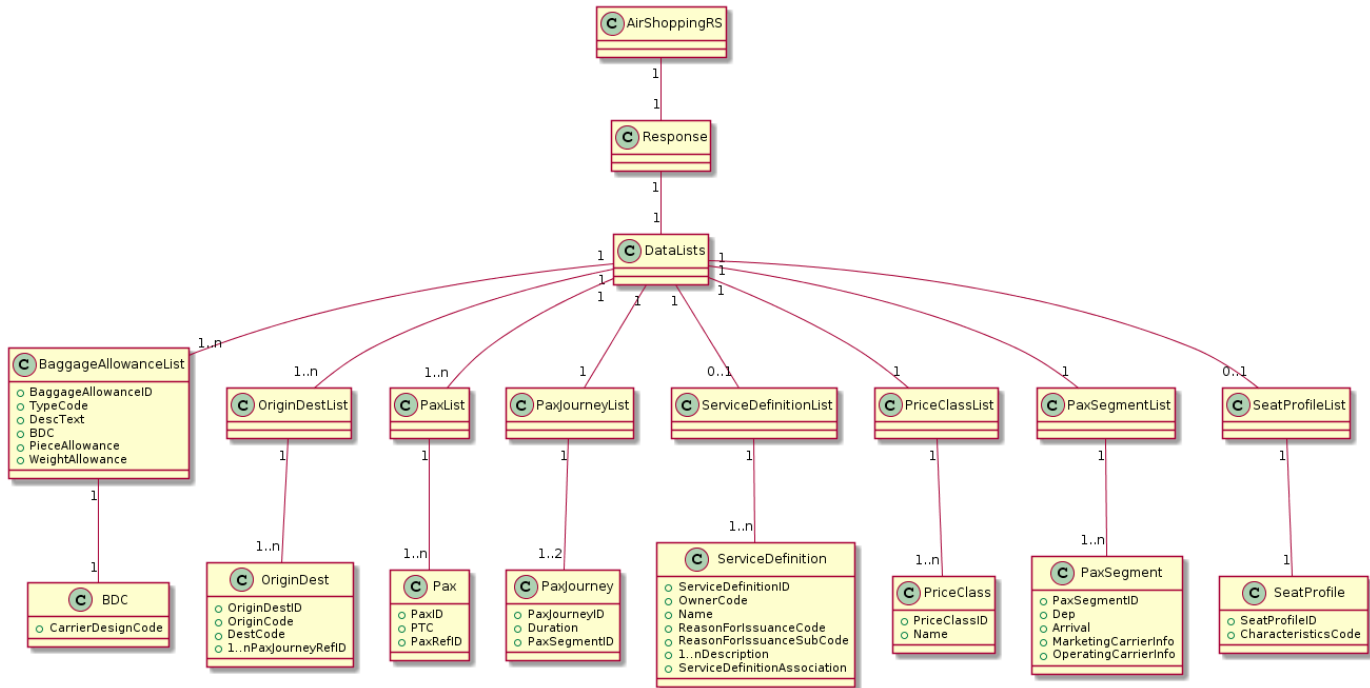
- priced offers

with chargeable and non-chargeable ancillary services

- data lists which contain precise data about offer elements

Class diagram describing the *AirShoppingRS* xml:





3.1.2 Implementation

This section describes the implementation of the output message based on the NDC schema version 18.1.

3.1.2.1 Payload Attributes

Designation	Repetition	Status	Location	Comments
Message version	1	M	/AirShoppingRS/PayloadAttributes/Version	Set to the NDC schema version to which the message complies to.

```

<PayloadAttributes>
  <Version>18.1</Version>
</PayloadAttributes>
```

3.1.2.2 Warnings

Used to convey warning messages in success cases.

Designation	Repetition	Status	Location	Comments
Warning	0..99	O	AirShoppingRS/Response/Warnings/Warning	One warning element per warning
Warning Code	0..1	O	/Warning@Code	Example: 710
Warning DescText	0..1	O	/Warning/@DescText	Example: SSR FQTV ADDITION

				FAILED
Warning Language	0..1	O	/Warning/@LanguageCode	Example: EN
Warning TagText	0..1	O	/Warning/@TagText	Example: PAX11
Warning Type	0..1	O	/Warning/@TypeCode	Example: W

```
<Warning>
  <Code>911</Code>
  <ns2:DescText>SSR FQTV ADDITION FAILED</DescText>
  <LanguageCode>EN</LanguageCode>
  <TagText> [PAX11]</TagText>
  <TypeCode>W</TypeCode>
</Warning>
```

3.1.2.3 Errors

Presence of the Errors element indicates an error state.

Designation	Repetition	Status	Location	Comments
Error	1..N	O	AirShoppingRS/Error/Error	One error element per error
Error Code	0..1	O	/Error/@Code	Example: 710
Error DescText	0..1	O	/Error/@DescText	Example: NOT AVAILABLE AND WAITLIST CLOSED
Error Language	0..1	O	/Error/@Language	Example: EN
Error Type	0..1	O	/Error/@TypeCode	Example: E

```
<Error>
  < Code>911< /Code>
  <DescText>NOT AVAILABLE AND WAITLIST CLOSED</DescText>
  <LanguageCode>EN</LanguageCode>
  <TypeCode>E</TypeCode>
</Error>
```

3.1.2.4 OffersGroup

Offer is the root of each solution that an end-user can buy, linking together the flights, travelers, services and price breakdown.

Each Offer consists of Offer Item(s), which are the atomic items with prices that the end-user can buy. The Offer contains at least one Offer Item, the Air Item, depicting the travel solution (flight & fare)

with potentially included ancillary services. Optional Offer Item(s), Ancillary Item(s), may be present if chargeable services can be bought optionally with the travel solution. The travel solution is described in the first offer item.

Offer items that has item id larger than 1 are ancillary services items corresponding to ancillary sub-codes coming from AirShopping request.

A list of Offers is returned in the response, with an OfferID attached to each of them. Each one is returned with associated Journey information. Each Offer contains one mandatory item (Air Item) and may contain some optional items (Ancillary Item). Those offer items are explained separately in sub-sections.

Designation	Repetition	Status	Location	Comments
Offer	1	M	AirShoppingRS/Response/OffersGroup/CarrierOffers	
Offer	0..n	M	AirShoppingRS/Response/OffersGroup/CarrierOffers/Offer/(#)	Here locates the Offers available for the request
Number of Offers	1	M	AirShoppingRS/Response/OffersGroup/CarrierOffers/CarrierOffersSummary/MatchedOfferQty	The total number of Offers in the list
Offer ID	1	M	#/OfferID	Unique ID assigned to the whole Offer
Owner Code	1	M	#/OwnerCode	Carrier code of the Offer owner Airline
Offer Expiration Date Time	1	O	#/OfferExpirationDateTime	The date/time after which a computed offer is considered to be expired, candidate for removal from the storage. Format-YYYY-

					mm-ddThh:MM:ssZ and timezone used is UTC, example - 2015-01-13T13:59:38Z
Offer Item	1..n	M	#/OfferItem		Offer Item(s) that belongs to the Offer.

Journey overview at Offers level is different for ITI and OWD mode.

Designation	Repetition	Status	Location	Comments
ITI mode				
Fare Family Code (short name)	1	M	#/JourneyOverview/PriceClassRefID	Indicates the Fare Family applied at itinerary level
Journey per bound	1..2	M	#/JourneyOverview/JourneyPriceClass	One JourneyPriceClass for whole itinerary
Journey reference of bound	1	M	#/JourneyOverview/JourneyPriceClass/PaxJourneyRefID	Indicates the bound reference.
OWD mode				
Fare Family Code (short name)	1	M	#/JourneyOverview/PriceClassRefID	Indicates the Fare Family applied at itinerary level
Journey per bound	1..2	M	#/JourneyOverview/JourneyPriceClass	One JourneyPriceClass per bound
Journey reference of bound	1	M	#/JourneyOverview/JourneyPriceClass/PaxJourneyRefID	Indicates the bound reference.
Fare Family	0..1	O	#/JourneyOverview/JourneyPriceClass/PriceClassR	Indicates the Fare Family

Code (short name)of bound	efID	applied to the bound.
------------------------------------	------	--------------------------

Example - ITI mode:

```

<OffersGroup>
  <CarrierOffers>
    <Offer>
      <OfferID>SULL-8095596499897810501-4</OfferID>
      <OwnerCode>6X</OwnerCode>
      <OfferExpirationDateTime>2019-06-
18T13:59:38Z</OfferExpirationDateTime>
      <JourneyOverview>
        <PriceClassRefID>BUSFLEX</PriceClassRefID>
        <JourneyPriceClass>
          <PaxJourneyRefID>FLT1</PaxJourneyRefID>
        </JourneyPriceClass>
        <JourneyPriceClass>
          <PaxJourneyRefID>FLT2</PaxJourneyRefID>
        </JourneyPriceClass>
      </JourneyOverview>
      <OfferItem>
        ...
      </OfferItem>
      <OfferItem>
        ...
      </OfferItem>
      <OfferItem>
        ...
      </OfferItem>
    </Offer>
    <CarrierOffersSummary>
      <MatchedOfferQty>4</MatchedOfferQty>
    </CarrierOffersSummary>
  </CarrierOffers>
</OffersGroup>

```

Example - OWD mode:

```

<OffersGroup>
  <CarrierOffers>
    <Offer>
      <OfferID>SULL-8095596499897810501-4</OfferID>
      <OwnerCode>6X</OwnerCode>
      <OfferExpirationDateTime>2019-06-
18T13:59:38Z</OfferExpirationDateTime>
      <JourneyOverview>
        <PriceClassRefID>BUSFLEX</PriceClassRefID>
        <JourneyPriceClass>
          <PriceClassRefID>BUSFLEX</ns2:PriceClassRefID>
          <PaxJourneyRefID>FLT1</PaxJourneyRefID>
        </JourneyPriceClass>
        <JourneyPriceClass>
          <PriceClassRefID>BUSSTD</ns2:PriceClassRefID>
          <PaxJourneyRefID>FLT2</PaxJourneyRefID>
        </JourneyPriceClass>
      </JourneyOverview>
    <OfferItem>

```

```

        </OfferItem>    ...
        <OfferItem>
            ...
            </OfferItem>
            <OfferItem>
                ...
                </OfferItem>
        </Offer>
        <CarrierOffersSummary>
            <MatchedOfferQty>4</MatchedOfferQty>
        </CarrierOffersSummary>
    </CarrierOffers>
</OffersGroup>
    
```

3.1.2.4.1 Air Item

This element describes all characteristics linked to the air offer. At this level total prices (with/without taxes) are displayed, including references to the flights solution, traveler type and applied Fare Family information.

The first OfferPrice element with OfferItemID always corresponds to the flight solution and must be present in each reply.

If there are chargeable ancillary services available then they will be set as separated OfferPrice elements with unique OfferItemID's, starting strictly from the second position as the first one reserved for the flights in case of V0. These elements are optional.

All non-chargeable ancillary services linked to the flights are stored as Associations under /OfferPrice/RequestedDate and they are optional as well (see "Use Case 2" from section 5).

This element contains information of Offer Item ID, Fare details, Services and Prices.

3.1.2.4.1.1 Offer Item

Designation	Repetition	Status	Location	Comments
Offer Item ID	1	M	Response/OffersGroup/CarrierOffers/Offer/OfferItem (#)	Unique ID that identifies the Offer Item
Mandatory Indicator	1	M	#/MandatoryInd	This describes if the Offer Item is a mandatory item or an optional item. Air Item is the mandatory item of each Offer.

Example:

```

<OfferItem>
  <OfferItemID>SULL-8095596499897810501-4-1</OfferItemID>
  <MandatoryInd>true</MandatoryInd>
</OfferItem>
    
```

```
</OfferItem>
```

3.1.2.4.1.2 Price

Describes the total amounts of the whole Offer Item, covering **all passengers and all flights**.

Designation	Repetition	Status	Location	Comments
Price	1	M	Response/OfferGroup/CarrierOffers/Offer/OfferItem/Price (#)	
Total price amount	1	M	#/TotalAmount/DetailCurrencyPrice	Total price amount of the whole Offer Item
Base fare amount	1	M	#/BaseAmount	The total amount of the base fare of the whole Offer Item
Discount	1	M	#/Discount	Discount received from AAM that is applied.
Pre-discounted amount	1	M	#/Discount/PreDiscountedAmount	The Original Price discount was applied to.
Description	1	O	#/Discount/DescText	RuleID for Best Discount (if returned by AAM), Example: 6XDDAPIDISC O1 -> Stands for DAPI discount.
Discount Context	1	M	#/Discount/DiscountContext	Contextual information to further describe a particular discount by using a key-value pair.
Key word Text	1	M	#/Discount/DiscountContext/KeyWordText	Rule ID
Value Text	1	M	#/Discount/DiscountContext/KeyWordText	Default Reason for discount (if not returned by

				AAM). "UNKNOWN" is returned if AAM does not return any reason for discount
Fee	0..n	O	#/Fee	
Fee amount	1	M	#/Fee/Amount	Indicates the single fee amount.
Fee Description	1	M	#/Fee/Description	This field is a description free text today, it describes the description of the fee and its sub-code
Fee Designator	1	M	#/Fee/Designator	The fee type code, eg. OBT for Airline Ticketing Fees
Total taxes amount	1	M	#/TaxSummary/TotalTaxAmount	The total amount of the taxes of the whole Offer Item

Example:

```

<Price>
  <TotalAmount>175.37</TotalAmount>
  <BaseAmount>40.00</BaseAmount>
  <Discount>
    <PreDiscountedAmount CurCode="EUR">18.00</PreDiscountedAmount>
    <DescText>523355488</DescText>
    <DiscountContext>
      <KeywordText>523355488</KeywordText>
      <ValueText>HOLIDAYS</ValueText>
    </DiscountContext>
    <DiscountContext>
      <KeywordText>124563199</KeywordText>
      <ValueText>UNKNOWN</ValueText>
    </DiscountContext>
  </Discount>
  <Fee>
    <Amount>72.00</Amount>
    <DescText>Description: OBFEEs Subcode: T12</DescText>
    <DesigText>OBT</DesigText>
  </Fee>
  <TaxSummary>
    <:TotalTaxAmount>63.37</TotalTaxAmount>
  </TaxSummary>
</Price>

```


3.1.2.4.2 Fare Detail

Multiple fare details should be present in each AirShoppingRS to present the information at different levels. Fare Detail is mainly used to display fare amount detail, fare component detail, or fare amount per flight (for OWD only).

Fare Detail per Passenger

FareDetail can be associated with a passenger type in order to present fare information for different passenger type. FareDetail at passenger type level is mandatory in all kinds of response.

This FareDetail contains both PassengerRefs element and Price element.

Designation	Repetition	Status	Location	Comments
Fare Detail	1	M	Response/OffersGroup/CarrierOffers/Offer/OfferItem/FareDetail (#)	
Passenger Reference	1..n	M	#/PassengerRefs	Reference of the passenger corresponding to the fare detail per passenger.
Fare				
Detail Currency Price	1	M	#/Price/TotalAmount/DetailCurrencyPrice	
Total price amount	1	M	#/Price/TotalAmount/DetailCurrencyPrice/Total	Total price amount of the referenced passenger
Base fare amount	1	M	#/Price/BaseAmount	The total amount of the base fare of the referenced passenger
Fees				
Fees	1	O	#/Price/TotalAmount/DetailCurrencyPrice/Fees	
Total fees amount	1	M	#/Price/TotalAmount/DetailCurrencyPrice/Fees/Total	Total fees amount of the referenced passenger

Fee breakdown	0..1	O	#/Price/TotalAmount/DetailCurrencyPrice/Fees/Breakdown	Breakdown of fee amounts of the referenced passenger
Fee	1..n	O	#/Price/TotalAmount/DetailCurrencyPrice/Fees/Breakdown/Fee	Breakdown of fee amounts of the referenced passenger
Fee amount	1	M	#/Price/TotalAmount/DetailCurrencyPrice/Fees/Breakdown/Fee/Amount	The amount of the single fee
Fee Designator	0..1	O	#/Price/TotalAmount/DetailCurrencyPrice/Fees/Breakdown/Fee/Designator	The fee type code, eg. OBT for Airline Ticketing Fees
Fee Description	0..1	O	#/Price/TotalAmount/DetailCurrencyPrice/Fees/Breakdown/Fee/Description	This field is a description free text today, it describes the description of the fee and its sub-code
Taxes				
Taxes	1	M	#/Price/Taxes	
Total taxes amount	1	M	#/Price/Taxes/Total	The total amount of the taxes of the referenced passenger
Tax breakdown	0..1	O	#/Price/Taxes/Breakdown	Breakdown of tax amounts
Tax amount	1	M	#/Price/Taxes/Breakdown/Tax/Amount	The amount of the single

				tax
Tax nation code	0..1	O	#/Price/Taxes/Breakdown/Tax/Nation	Indicates the tax country code, eg. US, FR
Tax nature code	0..1	O	#/Price/Taxes/Breakdown/Tax/TaxCode	Indicates the tax nature code, eg. AE, GB

Example - Fare amounts :

```

<OfferItem>
14702181392496876194-20-1</OfferItemID>
  <MandatoryInd>true</MandatoryInd>
  <PassengerRefs>PAX1</PassengerRefs>
  <DetailCurrencyPrice>
<Total>1664.37</Total>
</DetailCurrencyPrice>
  <BaseAmount>1534.00</BaseAmount>
  <Total>58.37</Total>
  <Breakdown>
  <Tax>
  <Amount>5.0</Amount>
  <Nation>VB</Nation>
  <TaxCode>YR</TaxCode>
  </Tax>
  <Tax>
  <Amount>8.16</Amount>
  <Nation>AP</Nation>
  <TaxCode>QX</TaxCode>
  </Tax>
  <Tax>
  <OfferItemID>SULG-
  <FareDetail>
    <Price>
      <TotalAmount>
    </TotalAmount>
    <Taxes>
  
```

```
<Amount>1.13</Amount>  
<Nation>EB</Nation>  
<TaxCode>IZ</TaxCode>  
</Tax>  
<Tax>  
<Amount>4.52</Amount>  
<Nation>SE</Nation>  
<TaxCode>FR</TaxCode>  
</Tax>  
<Tax>  
<Amount>7.9</Amount>  
<Nation>TI</Nation>  
<TaxCode>FR</TaxCode>  
</Tax>  
<Tax>  
<Amount>2.51</Amount>  
<Nation>AE</Nation>  
<TaxCode>EX</TaxCode>  
</Tax>  
<Tax>  
<Amount>7.5</Amount>  
<Nation>CO</Nation>  
<TaxCode>HB</TaxCode>  
</Tax>  
<Tax>  
<Amount>17.61</Amount>  
<Nation>EB</Nation>  
<TaxCode>IT</TaxCode>  
</Tax>  
<Tax>  
<Amount>0.86</Amount>  
<Nation>AD</Nation>  
<TaxCode>MJ</TaxCode>
```

```

</Tax>

<Tax>

<Amount>3.18</Amount>

<Nation>SE</Nation>

<TaxCode>VT</TaxCode>

</Tax>

</Breakdown>

</Taxes>
</Price>
<FareComponent>
  <FareBasis>

<FareBasisCode>

<Code>YIF</Code>

</FareBasisCode>

<RBD>Y</RBD>

<CabinType>

<CabinTypeCode>M</CabinTypeCode>

<CabinTypeName>Economic Standard</CabinTypeName>

</CabinType>

</FareBasis>

<PriceClassRef>ECONOMY</PriceClassRef>

<SegmentRefs>SEG11</SegmentRefs>

</FareComponent>
<FareComponent>
  <FareBasis>

<FareBasisCode>

<Code>CIF</Code>

</FareBasisCode>

<RBD>C</RBD>

<CabinType>

<CabinTypeCode>C</CabinTypeCode>

<CabinTypeName>Business</CabinTypeName>

</CabinType>

</FareBasis>

<PriceClassRef>BUSINESS</PriceClassRef>

<SegmentRefs>SEG27</SegmentRefs>

</FareComponent>
</FareDetail>
</OfferItem>

```

Fare Detail per Flight

In addition to Fare Detail per Passenger, this part is returned in response when the request has been done with **OWD** mode.

This FareDetail contains only Price element.

Designation	Repetition	Status	Location	Comments
			Response/OffersGroup/CarrierOffers/Offer/OfferItem/FareDetail(#)	
Total amount	1	M	#/Price/TotalAmount/DetailCurrencyPrice/Total	Total amount includes all flights
Detail per flight	1..n	M	#/Price/TotalAmount/DetailCurrencyPrice/Details/Detail	This element contains the flight reference and the subtotal amount with its amount description.
Flight reference	1..n	M	#/Price/TotalAmount/DetailCurrencyPrice/Details/Detail@Refs	
Amount	1	M	#/Price/TotalAmount/DetailCurrencyPrice/Details/Detail/SubTotal	
Amount description	1	M	#/Price/TotalAmount/DetailCurrencyPrice/Details/Detail/Description	Indicates if the amount concerned is subtotal amount, the sub-base amount or the sub-tax amount for the referred flight.

Example - Fare Amount Detail per Flight:

```

<FareDetail>
  <Price>
    <TotalAmount>
      <DetailCurrencyPrice>
        <Total>436.48</Total>
        <Details>
          <Detail refs="FLT1">
            <SubTotal>190.98</SubTotal>
            <Application>TOTAL AMOUNT</Application>
          </Detail>
          <Detail refs="FLT1">
            <SubTotal>63.00</SubTotal>
            <Application>BASE AMOUNT</Application>
          </Detail>
          <Detail refs="FLT1">
            <SubTotal>127.98</SubTotal>
            <Application>TAX AMOUNT</Application>
          </Detail>
          <Detail refs="FLT2">
            <SubTotal>245.50</SubTotal>
            <Application>TOTAL AMOUNT</Application>
          </Detail>
          <Detail refs="FLT2">
            <SubTotal>83.00</SubTotal>
            <Application>BASE AMOUNT</Application>
          </Detail>
          <Detail refs="FLT2">
            <SubTotal>162.50</SubTotal>
            <Application>TAX AMOUNT</Application>
          </Detail>
        </Details>
      </DetailCurrencyPrice>
    </TotalAmount>
    <BaseAmount>146.00</BaseAmount>
    <Taxes>
      <Total>290.48</Total>
    </Taxes>
  </Price>
</FareDetail>

```

Fare Component Detail

Each fareDetail element can contain one fare component. Each fare component detail is associated with a passenger type.

Designation	Repetition	Status	Location	Comments
			Response/OffersGroup/CarrierOffers/Offer/OfferItem/FareDetail(#)	
Fare Component	1..n	M	#/FareComponent	
Fare Basis Code	1	M	#/FareComponent/FareBasis/FareBasisCode	
RBD	1	M	#/FareComponent/FareBasis/RBD	
Cabin	1	M	#/FareComponent/FareBasis/CabinType/CabinTypeCode	

type code				
Cabin type name	1	M	#/FareComponent/FareBasis/CabinType/CabinTypeName	
Corporate account code	0..1	O	#/FareComponent/FareRules	
Corporate account code	0..1	O	#/FareComponent/FareRules/CorporateFare/Account	The corporate account code which has been applied in order to return the corporate fare
Fare Family References	1	M	#/FareComponent/PriceClassRef	Reference to the relative fare family
Segment References	1	M	#/FareComponent/SegmentRefs	Reference to the relative flight segment

Example - Fare component detail :

```

<FareDetail>
  <PassengerRefs>PAX11</PassengerRefs>
  <Price>
    <TotalAmount>
      <DetailCurrencyPrice>
        <Total>935.06</Total>
      </DetailCurrencyPrice>
    </TotalAmount>
    <BaseAmount>800.00</BaseAmount>
    <Taxes>
      <Total>48.82</Total>
    </Taxes>
  </Price>
  <FareComponent>
    <FareBasis>
      <FareBasisCode>
        <Code>JIFE</Code>
      </FareBasisCode>
      <RBD>J</RBD>
      <CabinType>
        <CabinTypeCode>C</CabinTypeCode>
        <CabinTypeName>Business</CabinTypeName>
      </CabinType>
    </FareBasis>
  </FareComponent>
</FareDetail>

```



```

        </FareBasis>
        <PriceClassRef>BUSFLEX</PriceClassRef>
        <SegmentRefs>SEG14</SegmentRefs>
    </FareComponent>
    <FareComponent>
        <FareBasis>
            <FareBasisCode>
                <Code>JIFE</Code>
            </FareBasisCode>
            <RBD>J</RBD>
            <CabinType>

                <CabinTypeCode>C</CabinTypeCode>
                <CabinTypeName>Business</CabinTypeName>
            </CabinType>
        </FareBasis>
        <PriceClassRef>BUSFLEX</PriceClassRef>
        <SegmentRefs>SEG15</SegmentRefs>
    </FareComponent>
    <FareComponent>
        <FareBasis>
            <FareBasisCode>
                <Code>JIFE</Code>
            </FareBasisCode>
            <RBD>J</RBD>
            <CabinType>

                <CabinTypeCode>C</CabinTypeCode>
                <CabinTypeName>Business</CabinTypeName>
            </CabinType>
        </FareBasis>
        <PriceClassRef>BUSFLEX</PriceClassRef>
        <SegmentRefs>SEG25</SegmentRefs>
    </FareComponent>
    <FareComponent>
        <FareBasis>
            <FareBasisCode>
                <Code>JIFE</Code>
            </FareBasisCode>
            <RBD>J</RBD>
            <CabinType>

                <CabinTypeCode>C</CabinTypeCode>
                <CabinTypeName>Business</CabinTypeName>
            </CabinType>
        </FareBasis>
        <PriceClassRef>BUSFLEX</PriceClassRef>
        <SegmentRefs>SEG26</SegmentRefs>
    </FareComponent>
</FareDetail>
<FareDetail>
    <PassengerRefs>PAX1</PassengerRefs>
    <Price>
        <TotalAmount>
            <DetailCurrencyPrice>
                <Total>1201.96</Total>
            </DetailCurrencyPrice>
        </TotalAmount>
        <BaseAmount>1000.00</BaseAmount>
        <Taxes>
            <Total>115.72</Total>
        </Taxes>
    </Price>
    <FareComponent>
        <FareBasis>
            <FareBasisCode>

```

```

        <Code>JIFE</Code>
      </FareBasisCode>
      <RBD>J</RBD>
      <CabinType>

          <CabinTypeCode>C</CabinTypeCode>
          <CabinTypeName>Business</CabinTypeName>
        </CabinType>
      </FareBasis>
      <PriceClassRef>BUSFLEX</PriceClassRef>
      <SegmentRefs>SEG14</SegmentRefs>
    </FareComponent>
  <FareComponent>
    <FareBasis>
      <FareBasisCode>
        <Code>JIFE</Code>
      </FareBasisCode>
      <RBD>J</RBD>
      <CabinType>

          <CabinTypeCode>C</CabinTypeCode>
          <CabinTypeName>Business</CabinTypeName>
        </CabinType>
      </FareBasis>
      <PriceClassRef>BUSFLEX</PriceClassRef>
      <SegmentRefs>SEG15</SegmentRefs>
    </FareComponent>
  <FareComponent>
    <FareBasis>
      <FareBasisCode>
        <Code>JIFE</Code>
      </FareBasisCode>
      <RBD>J</RBD>
      <CabinType>

          <CabinTypeCode>C</CabinTypeCode>
          <CabinTypeName>Business</CabinTypeName>
        </CabinType>
      </FareBasis>
      <PriceClassRef>BUSFLEX</PriceClassRef>
      <SegmentRefs>SEG25</SegmentRefs>
    </FareComponent>
  <FareComponent>
    <FareBasis>
      <FareBasisCode>
        <Code>JIFE</Code>
      </FareBasisCode>
      <RBD>J</RBD>
      <CabinType>

          <CabinTypeCode>C</CabinTypeCode>
          <CabinTypeName>Business</CabinTypeName>
        </CabinType>
      </FareBasis>
      <PriceClassRef>BUSFLEX</PriceClassRef>
      <SegmentRefs>SEG26</SegmentRefs>
    </FareComponent>
  </FareDetail>

```

Example - Fare component detail with account code :

```

<FareDetail>
  <PassengerRefs>PAX1</PassengerRefs>

```

```

    <Price>
      <TotalAmount>
        <DetailCurrencyPrice>
          <Total>539.87</Total>
        </DetailCurrencyPrice>
      </TotalAmount>
      <BaseAmount>400.00</BaseAmount>
      <Taxes>
        <Total>53.63</Total>
      </Taxes>
    </Price>
    <FareComponent>
      <FareBasis>
        <FareBasisCode>
          <Code>MIFE</Code>
        </FareBasisCode>
        <RBD>M</RBD>
        <CabinType>
          <CabinTypeCode>M</CabinTypeCode>
          <CabinTypeName>Economic Standard</CabinTypeName>
        </CabinType>
      </FareBasis>
      <FareRules>
        <CorporateFare>
          <Account>000001</Account>
        </CorporateFare>
      </FareRules>
      <PriceClassRef>ECOREST</PriceClassRef>
      <SegmentRefs>SEG3</SegmentRefs>
    </FareComponent>
  </FareDetail>

```

3.1.2.4.2.1 Services

Indicates information of related flight services.

Designation	Repetition	Status	Location	Comments
AirShoppingRS/Response/OffersGroup/CarrierOffers/Offer/OfferItem/ (#)				
Service	1..n	M	#/Service	Each FareDetail may contain one or several services.
Service ID	1	M	#/Service/ServiceID	Each service has a unique ID. Each OfferItem has at least flight services included.

Passenger Ref ID	1..14	M	#/Service/PaxRefID	Each service must be associated with at least one passenger.
Bound Ref ID	1..2	M	#/Service/ServiceAssociations/PaxJourneyRefID	Reference ID of the bound, eg. FLT1. This ID is returned for flight service only.

In case the service concerned is an ancillary service, the following information should be found:

Designation	Repetition	Status	Location	Comments
Service	1..n	M	#/Service	Each FareDetail may contain one or several services.
Service ID	1	M	#/Service/ServiceID	Each service has a unique ID. Each OfferItem has at least flight services included.
Passenger Ref ID	1..14	M	#/Service/PaxRefID	Each service must be associated with at least one passenger.
Bound Ref ID	1..2	M	#/Service/ServiceAssociations/PaxJourneyRefID	Reference ID of

				the bound, eg. FLT1. This ID is returned for flight service only.
Ancillary Service Definition Ref ID	0..5	O	#/Service/ServiceAssociations/ServiceDefinitionRef/ServiceDefinitionRefID	Reference ID of the ancillary service, eg. SEV8.

Example - Offer Item with flight service only:

```
<Service>
  <ServiceID>1</ServiceID>
  <PaxRefID>PAX1</PaxRefID>
  <PaxRefID>PAX11</PaxRefID>
  <ServiceAssociations>
    <PaxJourneyRefID>FLT1</PaxJourneyRefID>
    <PaxJourneyRefID>FLT2</PaxJourneyRefID>
  </ServiceAssociations>
</Service>
```

Example - Offer Item with flight service and ancillary services:

```
<Service>
  <ServiceID>1</ServiceID>
  <PaxRefID>PAX1</PaxRefID>
  <PaxRefID>PAX11</PaxRefID>
  <ServiceAssociations>
    <PaxJourneyRefID>FLT1</PaxJourneyRefID>
  </ServiceAssociations>
</Service>
<Service>
  <ServiceID>2</ServiceID>
  <PaxRefID>PAX1</PaxRefID>
  <PaxRefID>PAX11</PaxRefID>
  <ServiceAssociations>
    <PaxJourneyRefID>FLT2</PaxJourneyRefID>
  </ServiceAssociations>
</Service>
<Service>
  <ServiceID>3</ServiceID>
  <PaxRefID>PAX1</PaxRefID>
  <ServiceAssociations>
    <ServiceDefinitionRef>
      <ServiceDefinitionRefID>SRV1</ServiceDefinitionRefID>
    </ServiceDefinitionRef>
  </ServiceAssociations>
</Service>
<Service>
  <ServiceID>4</ServiceID>
  <PaxRefID>PAX1</PaxRefID>
```

```

    <ServiceAssociations>
      <ServiceDefinitionRef>
        <ServiceDefinitionRefID>SRV8</ServiceDefinitionRefID>
      </ServiceDefinitionRef>
    </ServiceAssociations>
  </Service>

```

3.1.2.4.3 Ancillary Items

All chargeable ancillary services (whose sub-code and other key information are provided in site configuration) are set in ancillary service items. Each ancillary service item has an unique Offer Item ID. Note: The price of Ancillary service here is for one adult only.

Designation	Repetition	Status	Location	Comments
Offer Item ID	1	M	OffersGroup/CarrierOffers/Offer/OfferItem (#)	Unique ID that identifies the Offer Item
Mandatory Indicator	1	M	#/MandatoryInd	This describes if the Offer Item is a mandatory item or an optional item. Ancillary Item is the optional item of each Offer.
Service				
Passenger Reference	1	M	#/Service/PaxRefID	Reference of the associated passenger.
Service Reference	1	M	#/Service/ServiceAssociations/ServiceDefinitionRef/ServiceDefinitionRefID	Reference of the ancillary service. Eg. SRV1
Flight Segment Reference	1..n	M	#/Service/ServiceAssociations/ServiceDefinitionRef/PaxSegmentRefID	Reference of the flight(s) covered by the ancillary service. Eg. SEG3
Price				

Service Total Amount	1	M	#/Price/Total Amount	
AAS Discount				
Discount element	0..1	O	#/Price/Discount	This element contains all information related to ancillary service discount
Original amount	0..1	O	#/Price/Discount/PreDiscountedAmount	Indicates the price amount before discount
Discount ID qualifier	0..1	O	#/Price/Discount/DiscountContext/KeywordText	Indicates that the text displayed in DiscountContext is the discount ID. Example text: id
Discount ID	0..1	O	#/Price/Discount/DiscountContext/ValueText	Indicates the reference to the applied discount
Reason of Discount	0..1	O	#/Price/Discount/DiscountContext/DescText	Indicates the reason of the discount

```

<OfferItem>
  <OfferItemID>SULL-8095596499897810501-1-2</OfferItemID>
  <MandatoryInd>>false</MandatoryInd>
  <Service>
    <ServiceID>1</ServiceID>
    <PaxRefID>PAX1</PaxRefID>
    <ServiceAssociations>
      <ServiceDefinitionRef>
        <ServiceDefinitionRefID>SRV2</ServiceDefinitionRefID>
        <PaxSegmentRefID>SEG3</PaxSegmentRefID>
        <PaxSegmentRefID>SEG16</PaxSegmentRefID>
      </ServiceDefinitionRef>
    </ServiceAssociations>
  </Service>
  <Price>
    <TotalAmount>2348.32</TotalAmount>
    <Discount>

```

```

        <PreDiscountedAmount>35.94</PreDiscountedAmount>
        <DiscountContext>
            <KeywordText>Id</KeywordText>
            <ValueText>6X-84144</ValueText>
        </DiscountContext>
    </Discount>
</Price>
</OfferItem>

```

3.1.2.5 DataLists

3.1.2.5.1 BaggageAllowanceList

This element includes all the baggage information. Based on Configuration we display either FBA (Free Baggage Allowance) or FBD (Detailed Free Baggage).

Designation	Repetition	Status	Location	Comments
BaggageAllowanceList	1..n	M	/Response/DataLists/BaggageAllowanceList(#)	
BaggageAllowance	1	M	#/BaggageAllowance(#)	Includes the baggage information
BaggageAllowanceID	1	M	#/BaggageAllowanceID	BAG1
TypeCode	1	M	#/TypeCode	CheckedBag
DescText	1	M	#/DescText	If FBD is configured, we get the information as either a text or an ATPCO code, but not both. Example for text: SURFBOARD UPTO50LB 23KG, Example of ATPCO Subcode: OGO
PieceAllowance	1	M	#/PieceAllowance(#)	Includes the peice information
ApplicablePartyText	1	M	#/PieceAllowance/ApplicablePartyText	Traveller

Total Quantity	1	M	#/PieceAllowance/TotalQty	Allowed Baggages in Pieces. Example: 2
WeightAllowance	1	M	#/WeightAllowance	
MaximumWeightMeasure	1	M	#/WeightAllowance/MaximumWeightMeasure	Example: 23, unit code K

```

<DataLists>
  <BaggageAllowanceList>
    <BaggageAllowance>
      <BaggageAllowanceID>FBA1</BaggageAllowanceID>
      <TypeCode>CheckedBag</TypeCode>
      <DescText>UPTO70LB 32KG AND62LI 158LCM</DescText>
      <PieceAllowance>
        <ApplicablePartyText>Traveler</ApplicablePartyText>
        <TotalQty>2</TotalQty>
      </PieceAllowance>
    </BaggageAllowance>
  </BaggageAllowanceList>
</DataLists>

```

3.1.2.5.2 O&D (Origin and Destination) List

This element represents all origins and destinations of the flights (bounds) used in the itineraries.

Designation	Repetition	Status	Location	Comments
O&D section	n	M	/Response/DataLists/OriginDestList(#)	
OriginDest	1..n	M	#/OriginDest	
Requested Segment ID	1	M	#/OriginDest/OriginDestID	Unique ID to identify the pair of Origin and Destination. For one O&D pair NCE-PAR, there'll be 2 requested segments (aka. bound) in case of round trip, NCE->PAR and PAR->NCE.
Origin code	1	M	#/OriginDest/OriginCode	Departure location code of the requested segment
Destination code	1	M	#/OriginDest/DestCode	Arrival location code of the requested segment
Flight solutions references	1..n	M	#/OriginDest/PaxJourneyRefID	Gives a reference on the related Flight solutions for the corresponding

Requested Segment.
Each flight solution can consist of one or several flight segments.
Eg. FLT3

```
<OriginDestList>
  <OriginDest>
    <OriginDestID>HELCDG</OriginDestID>
    <OriginCode>HEL</OriginCode>
    <DestCode>CDG</DestCode>
    <PaxJourneyRefID>FLT2</PaxJourneyRefID>
    <PaxJourneyRefID>FLT4</PaxJourneyRefID>
  </OriginDest>
  <OriginDest>
    <OriginDestID>CDGHEL</OriginDestID>
    <OriginCode>CDG</OriginCode>
    <DestCode>HEL</DestCode>
    <PaxJourneyRefID>FLT3</PaxJourneyRefID>
    <PaxJourneyRefID>FLT1</PaxJourneyRefID>
  </OriginDest>
</OriginDestList>
```

3.1.2.5.3 Passengers

This list describes all characteristics linked to a given passenger (i.e. the PTC, the associated adult passenger).

Designation	Repetition	Status	Location	Comments
Traveler Section	NbrOfPax		/DataLists/PaxList(#)	
Passenger UniqueID	1	M	#/PaxID	
PTC	1	M	#/PTC	
Linked passenger reference	0..1	O	#/PaxRefID	For each infant without seat, it is mandatory to display the reference of linked adult.
Loyalty Program Account	0..1	O	#/LoyaltyProgramAccount	Describes the Loyalty Program of the passenger.
Loyalty Program Account number	0..1	O	#/LoyaltyProgramAccount/Accountnumber	Describes the identifier of the Loyalty Program Account of the passenger.
Loyalty Program Provider	0..1	O	#/Pax/LoyaltyProgramAccount/Carrier	Describes the airline which provides the

Loyalty Program to the passenger.

```
<PaxList>
  <Pax>
    <PaxID>PAX1</PaxID>
    <PTC>ADT</PTC>
    <PaxRefID>PAX1</PaxRefID>
    <LoyaltyProgramAccount>
      <AccountNumber>5468035468767</AccountNumber>
      <Carrier>
        <AirlineDesigCode>6X</AirlineDesigCode>
      </Carrier>
    </LoyaltyProgramAccount>
  </Pax>
</PaxList>
```

3.1.2.5.4 Travel Solution list Per Bound

This element represents one travel solution (i.e. one bound) for the whole passenger's itinerary, including list of all intermediate flights between origin and destination.

FlightListDesignation	Repetition	Status	Location	Comments
Flight Combination Section	1..2		/DataLists/PaxJourneyList/PaxJourney(#)	
UniquelD of the travel solution	0..1	O	#/PaxJourneyID	
Total EFT	0..1	O	#/Duration	Duration Time of the flight time + connecting time. Example: PT9H20M
Flight Segment References	1..6	M	#/PaxSegmentID	

```
<PaxJourneyList>
  <PaxJourney>
    <PaxJourneyID>FLT3</PaxJourneyID>
    <Duration>PT2H55M</Duration>
    <PaxSegmentRefID>SEG3</PaxSegmentRefID>
  </PaxJourney>
  <PaxJourney>
    <PaxJourneyID>FLT1</PaxJourneyID>
    <Duration>PT6H30M</Duration>
    <PaxSegmentRefID>SEG14</PaxSegmentRefID>
    <PaxSegmentRefID>SEG15</PaxSegmentRefID>
  </PaxJourney>
  <PaxJourney>
    <PaxJourneyID>FLT2</PaxJourneyID>
    <Duration>PT7H30M</Duration>
    <PaxSegmentRefID>SEG25</PaxSegmentRefID>
    <PaxSegmentRefID>SEG26</PaxSegmentRefID>
  </PaxJourney>
</PaxJourneyList>
```

```

</PaxJourney>
<PaxJourney>
  <PaxJourneyID>FLT4</PaxJourneyID>
  <Duration>PT3H5M</Duration>
  <PaxSegmentRefID>SEG16</PaxSegmentRefID>
</PaxJourney>
</PaxJourneyList>

```

3.1.2.5.5 Flight Segment List

This list provides information about unitary flight segments. It includes information linked to date/time/terminal for both departure and arrival locations.

Designation	Repetition	Status	Location	Comments
Segment Section	n	M	/DataLists/PaxSegmentList/PaxSegment (#)	
Segment UniqueID	1	M	#/PaxSegmentID	
Duration	1	O	#/Duration	This duration represents the Effective Flight Time of a segment of a journey. Example: PT2H15M.
Departure Location Code	1	M	#/Dep/IATA_LocationCode	
Departure Terminal Name	0..1	O	#/Dep/TerminalName	
Departure Date and Time	1	M	#/Dep/AircraftScheduledDateTime	Eg. 2018-05-02T08:00:00
Arrival Location Code	1	M	#/Arrival/IATA_LocationCode	
Arrival Terminal Name	0..1	O	#/Arrival/TerminalName	
Arrival Date and Time	1	M	#/Arrival/AircraftScheduledDateTime	

Marketing Carrier Code	1	M	#/MarketingCarrierInfo/CarrierDesigCode	
Flight Number	1	M	#/MarketingCarrierInfo/MarketingCarrierFlightNumberText	
Operating Carrier	0..1	O	#/OperatingCarrierInfo/CarrierDesigCode	
Dated Operating Leg	0..1	O	#/DatedOperatingLeg/DatedOperatingLegID	Contains the Leg ID information . Eg: LEG1
Departure Location Code	1	M	#/DatedOperatingLeg/Dep/IATA_LocationCode	
Departure Terminal Name	0..1	O	#/DatedOperatingLeg/Dep/TerminalName	
Departure Date and Time	1	M	#/DatedOperatingLeg/Dep/AircraftScheduledDateTime	Eg. 2018-05-02T08:00:00
Arrival Location Code	1	M	#/DatedOperatingLeg/Arrival/IATA_LocationCode	
Arrival Terminal Name	0..1	O	#/DatedOperatingLeg/Arrival/TerminalName	
Arrival Date and Time	1	M	#/DatedOperatingLeg/Arrival/AircraftScheduledDateTime	
IATA Aircraft Type	0..1	O	#/DatedOperatingLeg/IATA_AircraftType/IATA_AircraftTypeCode	The IATA equipment code is returned here. Eg: 321

```

<PaxSegmentList>
  <PaxSegment>
    <PaxSegmentID>SEG5</PaxSegmentID>
    <Duration>PT2H15</Duration>
    <Dep>
      <IATA_LocationCode>SAL</IATA_LocationCode>
      <AircraftScheduledDateTime>2019-02-01T07:45:00</AircraftScheduledDateTime>
    </Dep>
    <Arrival>
      <IATA_LocationCode>LAX</IATA_LocationCode>
      <TerminalName>B</TerminalName>
    </Arrival>
  </PaxSegment>
</PaxSegmentList>

```

```

    <AircraftScheduledDateTime>2019-02-01T11:07:00</AircraftScheduledDateTime>
  </Arrival>
  <MarketingCarrierInfo>
    <CarrierDesigCode>AV</CarrierDesigCode>
    <MarketingCarrierFlightNumberText>522</MarketingCarrierFlightNumberText>
  </MarketingCarrierInfo>
  <DatedOperatingLeg>
    <DatedOperatingLegID>LEG1</DatedOperatingLegID>
  <Dep>
    <IATA_LocationCode>SAL</IATA_LocationCode>
    <AircraftScheduledDateTime>2019-02-01T07:45:00</AircraftScheduledDateTime>
  </Dep>
  <Arrival>
    <IATA_LocationCode>LAX</IATA_LocationCode>
    <TerminalName>B</TerminalName>
    <AircraftScheduledDateTime>2019-02-01T11:07:00</AircraftScheduledDateTime>
  </Arrival>
  <IATA_AircraftType>
    <IATA_AircraftTypeCode>321</IATA_AircraftTypeCode>
  </IATA_AircraftType>
  </DatedOperatingLeg>
</PaxSegment>
</PaxSegmentList>

```

3.1.2.5.6 Penalty List

This list provides the most relevant and important purchase conditions which have been filed as minirules in FareXpert.

Designation	Repetition	Status	Location	Comments
Penalty Section	n	O	/DataLists/PenaltyList/Penalty (#)	
Penalty UniqueID	1	M	#/PenaltyID	
Penalty Amount	0..1	O	#/PenaltyAmount	
Purchase Condition Description Text	0..n	O	#/DescText	
Penalty Application Type Code	0..1	O	#/AppCode	The code underlying the penalty code applied for a purchase condition
Cancel Fee Indicator	0..1	O	#/CancelFeeInd	This flag when set as TRUE indicates that cancellation charges will apply
Change Fee Indicator	0..1	O	#/ChangeFeeInd	This flag when set as TRUE indicates that any change in the itinerary will result in the application of the penalty fee defined in penalty amount

```

<ns2:PenaltyList>

```

```

<ns2:Penalty>
  <ns2:PenaltyID>PEN1</ns2:PenaltyID>
  <ns2:PenaltyAmount>10.00</ns2:PenaltyAmount>
  <ns2:DescText>Change permitted</ns2:DescText>
  <ns2:AppCode>BDC</ns2:AppCode>
  <ns2:ChangeFeeInd>>true</ns2:ChangeFeeInd>
</ns2:Penalty>
<ns2:Penalty>
  <ns2:PenaltyID>PEN2</ns2:PenaltyID>
  <ns2:PenaltyAmount>50.00</ns2:PenaltyAmount>
  <ns2:DescText>Reissue permitted</ns2:DescText>
  <ns2:AppCode>BDT</ns2:AppCode>
  <ns2:ChangeFeeInd>>true</ns2:ChangeFeeInd>
</ns2:Penalty>
<ns2:Penalty>
  <ns2:PenaltyID>PEN3</ns2:PenaltyID>
  <ns2:PenaltyAmount>100.00</ns2:PenaltyAmount>
  <ns2:DescText>Cancel permitted</ns2:DescText>
  <ns2:AppCode>BDT</ns2:AppCode>
  <ns2:CancelFeeInd>>true</ns2:CancelFeeInd>
</ns2:Penalty>
</ns2:PenaltyList>

```

3.1.2.5.7 Price Class List

This element contains Fare Family information.

Here you'll find the ancillary services coming from Fare Families. The data comes from FareXpert AFF or ATPCo.

Designation	Repetition	Status	Location	Comments
Fare Family Section	n	M	/DataLists/PriceClassList/PriceClass (#)	
FareFamily UniqueID	1	M	#/PriceClassID	
FareFamily Name	1	M	#/Name	

```

<PriceClassList>
  <PriceClass>
    <PriceClassID>BIZFLAZ</PriceClassID>
    <Name>BIZFLAZ</Name>
  </PriceClass>
  <PriceClass>
    <PriceClassID>ECOFLEX</PriceClassID>
    <Name>ECOFLEX</Name>
  </PriceClass>
</PriceClassList>

```

3.1.2.5.8 Service Definition List

This element contains information about ancillary services as well as service references used to associate the service to the offer.

Designation	Repetition	Status	Location	Comments
Service Definition List	0..1	O	DataLists/ServiceDefinitionList(#)	

Service definition	1..n	M	# /ServiceDefinition	
Service UniqueID	1	M	#/ServiceDefinition/ServiceDefinitionID	Reference of the service
Service Owner code	1	M	#/ServiceDefinition/OwnerCode	Carrier code of the service owner. Eg. 6X
Service Name	1	M	#/ServiceDefinition/Name	Commercial service name, Example: SEAT
Service Code	1	M	#/ServiceDefinition/Code	Commercial service code, Example: SIT
RFIC (Reason For Issuance Code)	1	M	#/ServiceDefinition/ReasonForIssuanceCode	IATA-defined code.Examples : <ul style="list-style-type: none"> • A (Air Transportation) • C (Baggage) • E (Airport Services) • F (Merchandise) • G (In-flight Services)
Service Sub-Code	1	M	#/ServiceDefinition/ReasonForIssuanceSubCode	Defined by the owner Airline. Ex: OCC (First Checked Bag), OB5 (Pre-reserved seat)
Service Description ID	1..n	M	#/ServiceDefinition/Description/DescID	Contains different IDs of the service, such as D1 which are mandatory service information.

Service Description	1..n	M	#/ServiceDefinition/Description/DescText	Contains different descriptions of the service, such as Service Group Code, Service Classification Code which are mandatory service information.
Media ID	0..1	O	#/ServiceDefinition/Description/Media/MediaID	Contains the ID of the picture attached to the service.
Seat characteristics ID	0..1	O	#/ServiceDefinition/ServiceDefinitionAssociation/SeatProfileRefID	References to the characteristics codes attached to the seat service.

```

<ServiceDefinitionList>
  <ServiceDefinition>
    <ServiceDefinitionID>SRV4</ServiceDefinitionID>
    <OwnerCode>6X</OwnerCode>
    <Name>SEAT</Name>
    <ServiceCode>SIT</ServiceCode>
    <ReasonForIssuanceCode>A</ReasonForIssuanceCode>
    <ReasonForIssuanceSubCode>0B5</ReasonForIssuanceSubCode>
    <Description>
      <DescID>D1</DescID>
      <DescText>Group: SA</DescText>
    </Description>
    <Description>
      <DescID>D1</DescID>
      <DescText>Classification: F</DescText>
    </Description>
    <Description>
      <DescID>D1</DescID>
      <DescText>Seat characteristics:
[K]</DescText>
    </Description>
    <ServiceDefinitionAssociation>
      <SeatProfileRefID>SP1</SeatProfileRefID>
    </ServiceDefinitionAssociation>
  </ServiceDefinition>
  <ServiceDefinition>
    <ServiceDefinitionID>SRV3</ServiceDefinitionID>
    <OwnerCode>6X</OwnerCode>
    <Name>SEAT</Name>
    <ServiceCode>SIT</ServiceCode>
    <ReasonForIssuanceCode>A</ReasonForIssuanceCode>
    <ReasonForIssuanceSubCode>0B5</ReasonForIssuanceSubCode>
    <Description>
      <DescID>D1</DescID>

```

```

                <DescText>Group: SA</DescText>
            </Description>
        <Description>
            <DescID>D1</DescID>
            <DescText>Classification: F</DescText>
        </Description>
        <Description>
            <DescID>D1</DescID>
            <DescText>Seat characteristics:
[CH]</DescText>
        </Description>
        <ServiceDefinitionAssociation>
            <SeatProfileRefID>SP4</SeatProfileRefID>
        </ServiceDefinitionAssociation>
    </ServiceDefinition>
</ServiceDefinitionList>
    
```

3.1.2.5.9 Seat Profile List

This element contains seat characteristics codes that identifies different seat profiles.

Designation	Repetition	Status	Location	Comments
Seat Characteristics Section	0..1	O	/DataLists/SeatProfileList/	Up to 5 Seat Characteristics Codes can be defined for one seat, each code set in one SeatProfile.
Seat Characteristics Section	1	M	/DataLists/SeatProfileList/SeatProfile/(#)	
Seat Characteristics Set ID	1	M	#/SeatProfileID	Reference of the set of Seat Characteristics Code(s)
Seat Characteristics Code(s)	1..5	M	#/CharacteristicCode	a seat characteristics code, eg. CH usually means for chargeable, W usually means for window seat, L for leg space etc.

```

<SeatProfileList>
  <SeatProfile>
    <SeatProfileID>SP1</SeatProfileID>
    <CharacteristicCode>CH</CharacteristicCode>
  </SeatProfile>
  <SeatProfile>
    <SeatProfileID>SP3</SeatProfileID>
    <CharacteristicCode>CH O</CharacteristicCode>
  </SeatProfile>
  <SeatProfile>
    <SeatProfileID>SP2</SeatProfileID>
    <CharacteristicCode>K</CharacteristicCode>
  </SeatProfile>
</SeatProfileList>
    
```

```

        </SeatProfile>
        <SeatProfile>
            <SeatProfileID>SP4</SeatProfileID>
            <CharacteristicCode>L</CharacteristicCode>
        </SeatProfile>
    </SeatProfileList>
    
```

3.1.2.6 MetaData

This element contains metadata which applies to the whole response, such currency code, etc.

Designation	Repetition	Status	Location	Comments
Currency code	1	M	/Metadata/Other/OtherMetadata/CurrencyMetadatas/CurrencyMetadata/Name	Example : EUR, USD, ...

```

<Metadata>
    <Other>
        <OtherMetadata>
            <CurrencyMetadatas>
                <CurrencyMetadata MetadataKey="CUREUR">
                    <Name>EUR</Name>
                </CurrencyMetadata>
            </CurrencyMetadatas>
        </OtherMetadata>
    </Other>
</Metadata>
    
```

3.1.2.7 Shopping Response ID

Each Offer ID consists of the shopping response ID and the offer index number. Shopping Response ID consists of a code including the concerned central system shopping machine code and a serial number.

Designation	Repetition	Status	Location	Comments
Shopping Response ID	1	M	/ShoppingResponse/ResponseID	Example: SULG-8429577745573965583

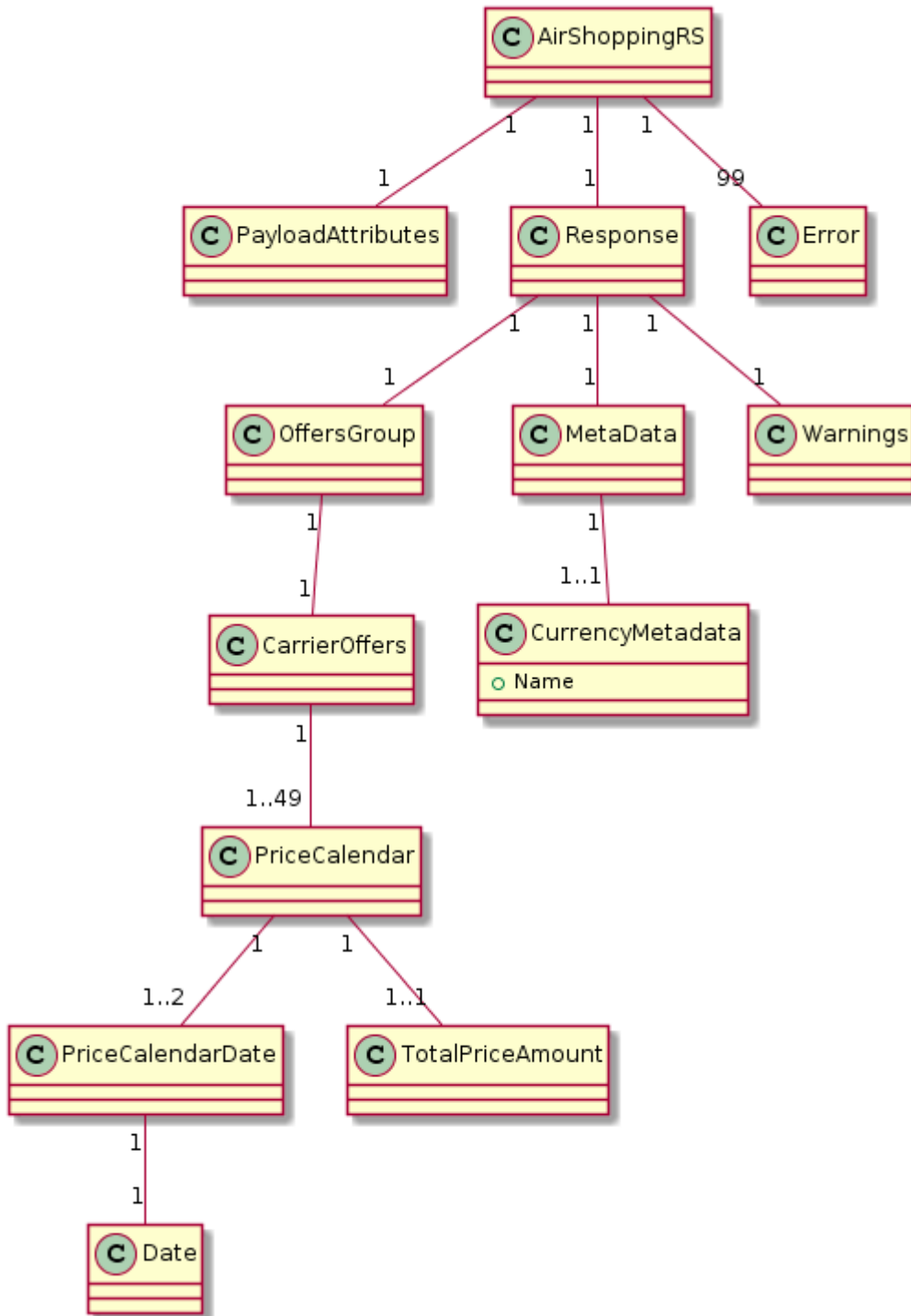
```

<ShoppingResponse>
    <ResponseID>SULG-8429577745573965583</ShoppingResponseID>
</ShoppingResponse>
    
```

3.2 Calendar Reply

3.2.1 Functional Description

AirShopping Calendar response provides a list of available prices offered for each date cell satisfying the search criteria. Class diagram describing the *AirShoppingRS* xml:



3.2.2 Implementation

This section describes the implementation of the output message based on the NDC schema version 18.1.

3.2.2.1 Payload Attributes

Please refer to section [Payload Attributes](#) for Upsell response 3.1.2.1.

3.2.2.2 Warnings

Please refer to section [Warnings](#) for Upsell response (3.1.2.2).

3.2.2.3 Errors

Please refer to section [Errors](#) for Upsell response (3.1.2.3).

3.2.2.4 OffersGroup

When shopping search is done with flexible dates, the total price of each available date combination is displayed. Calendar request supports +/- 15 days maximum.

Designation	Repetition	Status	Location	Comments
Calendar cell	1..49	M	OffersGroup/AirlineOffers/PriceCalendar (#)	Presents an available date for one way search and an available date combination for 2 bound search.
Calendar date(s)	1..2	M	#/PriceCalendarDate/Date	Presents the date(s) of the calendar cell.
Total price amount	1	M	#/TotalPriceAmount	Presents the total price amount of the corresponding date(s) for one adult.

```

<OffersGroup>
  <CarrierOffers>
    <PriceCalendar>
      <TotalPriceAmount>2348.32</TotalPriceAmount>
      <PriceCalendarDate>
        <Date>2018-12-24</Date>
      </PriceCalendarDate>
      <PriceCalendarDate>
        <Date>2018-12-27</Date>
      </PriceCalendarDate>
    </PriceCalendar>
  </CarrierOffers>
</OffersGroup>
    
```

3.2.2.5 Metadata

This element contains metadata such as currency, etc.

Metadata Designation	Repetition	Status	Location	Comments
Currency Metadata	1..n	M	/Metadata/Other/OtherMetadata/ (#)	
Currency code	1	M	#/CurrencyMetadatas/CurrencyMetadata/Name	Example: EUR, USD, ...

```

<Metadata>
  <Other>
    <OtherMetadata>
      <CurrencyMetadatas>
        <CurrencyMetadata MetadataKey="CUREUR">
    
```

```

        <Name>EUR</Name>
      </CurrencyMetadata>
    </CurrencyMetadatas>
  </OtherMetadata>
</Other>
</Metadata>

```

4 Troubleshooting

4.1 Input Validation Errors

User request can be rejected due to the invalid input. In this case system will return error message associated with incorrect input parameter. Here are the list of most common errors:

Error

Related to passenger information

THE MAXIMUM NUMBER OF PASSENGERS FOR THE AVAILABILITY REQUEST IS 9. PLEASE MODIFY YOUR REQUEST AND TRY AGAIN.

THE SYSTEM DOES NOT ACCEPT MORE THAN 9 PASSENGERS. PLEASE CHANGE YOUR REQUEST.

INVALID PASSENGER TYPE.

AN INFACNT CANNOT TRAVEL ALONE.

THIS PASSENGER TYPE CANNOT TRAVEL WITH AN INFANT. PLEASE ASSOCIATE THE INFANT WITH A PASSENGER OF ANY OTHER TYPE OTHER THAN CHILD.

Related to fare options

YOU SELECTED TOO MANY FARE OPTIONS. PLEASE CHOOSE BETWEEN ONE AND THREE OPTIONS.

THIS FARE OPTION IS NOT DEFINED IN OUR DATABASE. PLEASE SELECT ANOTHER OPTION.

THIS FARE OPTION IS CURRENTLY NOT AVAILABLE. PLEASE SELECT ANOTHER OPTION.

THE SELECTED TRIP TYPE CANNOT BE PROCESSED. SELECT A VALID TRIP TYPE AND TRY AGAIN.

Related to dates

THE REQUESTED DEPARTURE DATE IS TOO SOON. VALID DATES ARE ^DATA(START_RANGE_NUM) FROM NOW THROUGH THE NEXT ^DATA(END_RANGE_NUM). PLEASE MODIFY YOUR DATES AND TRY AGAIN.

WE CAN PROVIDE YOU WITH RESULTS FOR TRAVEL BETWEEN ^DATA(START_RANGE_NUM) AND ^DATA(END_RANGE_NUM). PLEASE CHANGE YOUR STAY DURATION AND TRY AGAIN.

Other reason

INVALID CURRENCY CODE. PLEASE ENTER A DIFFERENT CURRENCY CODE.

THE SELECTED DATE RANGE IS NOT POSSIBLE FOR THIS TYPE OF SEARCH. PLEASE SELECT A DATE RANGING FROM 30 DAYS EARLIER UP TO 30 DAYS.

Examples of error messages:

In case the frequent flyer number received is invalid, the system replies: FREQUENT FLYER NUMBER NOT FOUND (Code 710)

In case there's more than 1 recognized travelers, the system replies: ONLY ON RECOGNIZED TRAVELER ACCEPTED PER REQUEST(Code 710)

In case the itinerary requested is in the past, the system replies: PAST DATE/TIME NOT ALLOWED (Code 710)

In case no result are found for the requested itinerary, the system replies: NO ITINERARY FOUND FOR REQUESTED SEGMENT (Code 710)

- Invalid range of dates option. Please choose flexible dates within the calendar limit.

5 Detailed Use Cases

5.1 Use case 1

5.1.1 Use Case Description

Simple upsell request with two passengers:

- **Upsell request**
- **2 PAX ADT**
- **Round Trip**
- **ITI mode**

5.1.2 Preconditions

General prerequisites for the Airshopping transaction specified in section 1.5

5.1.3 Query

```
<AirShoppingRQ xmlns="http://www.iata.org/IATA/2015/00/2018.1/AirShoppingRQ">
  <PayloadAttributes>
    <Version>18.1</Version>
  </PayloadAttributes>
  <Party>
    <Sender>
      <EnabledSystem>
        <SystemID>token</SystemID>
      </EnabledSystem>
    </Sender>
  </Party>
  <Request>
    <FlightRequest>
      <OriginDestRequest>
        <DestArrivalRequest>
          <IATA_LocationCode>HEL</IATA_LocationCode>
        </DestArrivalRequest>
      </OriginDestRequest>
    </FlightRequest>
  </Request>
</AirShoppingRQ>
```

```

        </DestArrivalRequest>
        <OriginDepRequest>
            <IATA_LocationCode>PAR</IATA_LocationCode>
            <Date>2018-10-24</Date>
        </OriginDepRequest>
    </OriginDestRequest>
    <OriginDestRequest>
        <CalendarDateRequest>
            <DaysBeforeNumber>0</DaysBeforeNumber>
            <DaysAfterNumber>0</DaysAfterNumber>
        </CalendarDateRequest>
        <OriginDepRequest>
            <IATA_LocationCode>HEL</IATA_LocationCode>
            <Date>2018-11-2</Date>
        </OriginDepRequest>
        <DestArrivalRequest>
            <IATA_LocationCode>PAR</IATA_LocationCode>
        </DestArrivalRequest>
    </OriginDestRequest>
</FlightRequest>
<Paxs>
    <Pax>
        <PaxID>ADT1</PaxID>
        <PTC>ADT</PTC>
    </Pax>
    <Pax>
        <PaxID>ADT2</PaxID>
        <PTC>ADT</PTC>
    </Pax>
</Paxs>
<ResponseParameters>
    <CurParameter>
        <CurCode>EUR</CurCode>
    </CurParameter>
</ResponseParameters>
<ShoppingCriteria>
    <CabinTypeCriteria>
        <CabinTypeName>ECO</CabinTypeName>
    </CabinTypeCriteria>
    <CarrierCriteria>
        <Carrier>
            <AirlineDesigCode>6X</AirlineDesigCode>
        </Carrier>
    </CarrierCriteria>
</ShoppingCriteria>
</Request>
</AirShoppingRQ>

```

5.1.4 Reply

```

<AirShoppingRS xmlns="http://www.iata.org/IATA/2015/00/2018.1/AirShoppingRQ"
xmlns2="http://www.iata.org/IATA/2015/00/2018.1/AirShoppingRS">
    <PayloadAttributes>
        <Version>18.1</Version>
        <CorrelationID>987456777</CorrelationID>
    </PayloadAttributes>
    <Response>
        <AirShoppingProcessing>
            <MarketingMessages>
                <MarketMessage>

```



```

    <Associations>
      <OfferAssociations>
        <Flight>
          <FlightSegmentReference ref="SEG3">
            <ClassOfService>
              C
            </ClassOfService>
          </FlightSegmentReference>
          <FlightSegmentReference ref="SEG4">
            <ClassOfService>
              C
            </ClassOfService>
          </FlightSegmentReference>
          <FlightSegmentReference ref="SEG15">
            <ClassOfService>
              C
            </ClassOfService>
          </FlightSegmentReference>
          <FlightSegmentReference ref="SEG16">
            <ClassOfService>
              C
            </ClassOfService>
          </FlightSegmentReference>
        </Flight>
      </OfferAssociations>
    </Associations>
  </MarketMessage>
</MarketingMessages>
</AirShoppingProcessing>
<DataLists>
  <OriginDestList>
    <OriginDest>
      <OriginDestID>HELCDG</OriginDestID>
      <OriginCode>HEL</OriginCode>
      <DestCode>CDG</DestCode>
      <PaxJourneyRefID>FLT4</PaxJourneyRefID>
      <PaxJourneyRefID>FLT2</PaxJourneyRefID>
    </OriginDest>
    <OriginDest>
      <OriginDestID>CDGHEL</OriginDestID>
      <OriginCode>CDG</OriginCode>
      <DestCode>HEL</DestCode>
      <PaxJourneyRefID>FLT1</PaxJourneyRefID>
      <PaxJourneyRefID>FLT3</PaxJourneyRefID>
    </OriginDest>
  </OriginDestList>
  <PaxJourneyList>
    <PaxJourney>
      <PaxJourneyID>FLT4</PaxJourneyID>
      <Duration>PT3H5M0.000S</Duration>
      <PaxSegmentRefID>SEG16</PaxSegmentRefID>
    </PaxJourney>
    <PaxJourney>
      <PaxJourneyID>FLT1</PaxJourneyID>
      <Duration>PT2H55M0.000S</Duration>
      <PaxSegmentRefID>SEG3</PaxSegmentRefID>
    </PaxJourney>
    <PaxJourney>
      <PaxJourneyID>FLT3</PaxJourneyID>
      <Duration>PT2H55M0.000S</Duration>
      <PaxSegmentRefID>SEG4</PaxSegmentRefID>
    </PaxJourney>
    <PaxJourney>
      <PaxJourneyID>FLT2</PaxJourneyID>
      <Duration>PT3H5M0.000S</Duration>
      <PaxSegmentRefID>SEG15</PaxSegmentRefID>
    </PaxJourney>
  </PaxJourneyList>

```

```

        </PaxJourney>
    </PaxJourneyList>
    <PaxList>
        <Pax>
            <PaxID>PAX1</PaxID>
            <PTC>ADT</PTC>
        </Pax>
        <Pax>
            <PaxID>PAX2</PaxID>
            <PTC>ADT</PTC>
        </Pax>
    </PaxList>
    <PaxSegmentList>
        <PaxSegment>
            <PaxSegmentID>SEG3</PaxSegmentID>
            <Dep>
                <IATA_LocationCode>CDG</IATA_LocationCode>
                <AircraftScheduledDateTime>2018-10-
24T15:25:00</AircraftScheduledDateTime>
            </Dep>
            <Arrival>
                <IATA_LocationCode>HEL</IATA_LocationCode>
                <AircraftScheduledDateTime>2018-10-
24T19:20:00</AircraftScheduledDateTime>
            </Arrival>
            <MarketingCarrierInfo>
                <CarrierDesigCode>6X</CarrierDesigCode>

            <MarketingCarrierFlightNumberText>9978</MarketingCarrierFlightNumberText>
            </MarketingCarrierInfo>
            <OperatingCarrierInfo>
                <CarrierDesigCode>6X</CarrierDesigCode>
            </OperatingCarrierInfo>
        </PaxSegment>
        <PaxSegment>
            <PaxSegmentID>SEG4</PaxSegmentID>
            <Dep>
                <IATA_LocationCode>CDG</IATA_LocationCode>
                <AircraftScheduledDateTime>2018-10-
24T15:25:00</AircraftScheduledDateTime>
            </Dep>
            <Arrival>
                <IATA_LocationCode>HEL</IATA_LocationCode>
                <AircraftScheduledDateTime>2018-10-
24T19:20:00</AircraftScheduledDateTime>
            </Arrival>
            <MarketingCarrierInfo>
                <CarrierDesigCode>6X</CarrierDesigCode>

            <MarketingCarrierFlightNumberText>3618</MarketingCarrierFlightNumberText>
            </MarketingCarrierInfo>
            <OperatingCarrierInfo>
                <CarrierDesigCode>6X</CarrierDesigCode>
            </OperatingCarrierInfo>
        </PaxSegment>
        <PaxSegment>
            <PaxSegmentID>SEG15</PaxSegmentID>
            <Dep>
                <IATA_LocationCode>HEL</IATA_LocationCode>
                <AircraftScheduledDateTime>2018-11-
02T07:35:00</AircraftScheduledDateTime>
            </Dep>
            <Arrival>
                <IATA_LocationCode>CDG</IATA_LocationCode>
                <AircraftScheduledDateTime>2018-11-
02T09:40:00</AircraftScheduledDateTime>
            </Arrival>

```

```

        </Arrival>
        <MarketingCarrierInfo>
            <CarrierDesigCode>6X</CarrierDesigCode>
        </MarketingCarrierInfo>
        <MarketingCarrierFlightNumberText>3616</MarketingCarrierFlightNumberText>
        </MarketingCarrierInfo>
        <OperatingCarrierInfo>
            <CarrierDesigCode>6X</CarrierDesigCode>
        </OperatingCarrierInfo>
    </PaxSegment>
    <PaxSegment>
        <PaxSegmentID>SEG16</PaxSegmentID>
        <Dep>
            <IATA_LocationCode>HEL</IATA_LocationCode>
            <AircraftScheduledDateTime>2018-11-
02T12:15:00</AircraftScheduledDateTime>
        </Dep>
        <Arrival>
            <IATA_LocationCode>CDG</IATA_LocationCode>
            <AircraftScheduledDateTime>2018-11-
02T14:20:00</AircraftScheduledDateTime>
        </Arrival>
        <MarketingCarrierInfo>
            <CarrierDesigCode>6X</CarrierDesigCode>
        </MarketingCarrierInfo>
        <MarketingCarrierFlightNumberText>3617</MarketingCarrierFlightNumberText>
        </MarketingCarrierInfo>
        <OperatingCarrierInfo>
            <CarrierDesigCode>6X</CarrierDesigCode>
        </OperatingCarrierInfo>
    </PaxSegment>
</PaxSegmentList>
<PriceClassList>
    <PriceClass>
        <PriceClassID>-ALL-</PriceClassID>
        <Name>-ALL-</Name>
    </PriceClass>
</PriceClassList>
</DataLists>
<OffersGroup>
    <CarrierOffers>
        <Offer>
            <OfferID>SULL-7205623657604005066-1</OfferID>
            <OwnerCode>6X</OwnerCode>
            <JourneyOverview>
                <PriceClassRefID>-ALL-</PriceClassRefID>
                <JourneyPriceClass>
                    <PaxJourneyRefID>FLT1</PaxJourneyRefID>
                </JourneyPriceClass>
                <JourneyPriceClass>
                    <PaxJourneyRefID>FLT2</PaxJourneyRefID>
                </JourneyPriceClass>
            </JourneyOverview>
            <OfferItem>
                <OfferItemID>SULL-7205623657604005066-1-1</OfferItemID>
                <MandatoryInd>true</MandatoryInd>
                <FareDetail>
                    <PassengerRefs>PAX1 PAX2</PassengerRefs>
                    <Price>
                        <TotalAmount>
                            <DetailCurrencyPrice>
                                <Total>2408.84</Total>
                            <Fees>
                                <Total>72.00</Total>
                            <Breakdown>
                                <Fee>

```

```

<Amount>72.00</Amount>

<Designator>OBT</Designator>

<Description>Description: OBFEEES Subcode: T12</Description>
    </Fee>
    </Breakdown>
    </Fees>
    </DetailCurrencyPrice>
</TotalAmount>
<BaseAmount>2282.00</BaseAmount>
<Taxes>
    <Total>54.84</Total>
</Taxes>
</Price>
</FareDetail>
<FareDetail>
    <PassengerRefs>PAX1 PAX2</PassengerRefs>
    <Price>
        <TotalAmount>
            <DetailCurrencyPrice>
                <Total>2408.84</Total>
            </DetailCurrencyPrice>
        </TotalAmount>
        <BaseAmount>2282.00</BaseAmount>
        <Taxes>
            <Total>54.84</Total>
        </Taxes>
    </Price>
    <FareComponent>
        <FareBasis>
            <FareBasisCode>
                CIF
            </FareBasisCode>
            <RBD>C</RBD>
            <CabinType>
                <CabinTypeCode xsi:type="xs:string"
xmlxsi="http://www.w3.org/2001/XMLSchema-instance"
xmlxs="http://www.w3.org/2001/XMLSchema">C</CabinTypeCode>
                <CabinTypeName xsi:type="xs:string"
xmlxsi="http://www.w3.org/2001/XMLSchema-instance"
xmlxs="http://www.w3.org/2001/XMLSchema">Business</CabinTypeName>
            </CabinType>
        </FareBasis>
        <PriceClassRef>-ALL-</PriceClassRef>
        <SegmentRefs>SEG3</SegmentRefs>
    </FareComponent>
    <FareComponent>
        <FareBasis>
            <FareBasisCode>
                CIF
            </FareBasisCode>
            <RBD>C</RBD>
            <CabinType>
                <CabinTypeCode xsi:type="xs:string"
xmlxsi="http://www.w3.org/2001/XMLSchema-instance"
xmlxs="http://www.w3.org/2001/XMLSchema">C</CabinTypeCode>
                <CabinTypeName xsi:type="xs:string"
xmlxsi="http://www.w3.org/2001/XMLSchema-instance"
xmlxs="http://www.w3.org/2001/XMLSchema">Business</CabinTypeName>
            </CabinType>
        </FareBasis>
        <PriceClassRef>-ALL-</PriceClassRef>
        <SegmentRefs>SEG15</SegmentRefs>

```

```

        </FareComponent>
    </FareDetail>
    <Service>
        <ServiceID>1</ServiceID>
        <PaxRefID>PAX1</PaxRefID>
        <PaxRefID>PAX2</PaxRefID>
        <ServiceAssociations>
            <PaxJourneyRefID>FLT1</PaxJourneyRefID>
        </ServiceAssociations>
    </Service>
    <Service>
        <ServiceID>2</ServiceID>
        <PaxRefID>PAX1</PaxRefID>
        <PaxRefID>PAX2</PaxRefID>
        <ServiceAssociations>
            <PaxJourneyRefID>FLT2</PaxJourneyRefID>
        </ServiceAssociations>
    </Service>
    <Price>
        <TotalAmount>4817.68</TotalAmount>
        <BaseAmount>4564.00</BaseAmount>
        <Fee>
            <Amount>144.00</Amount>
            <DescText>Description: OBFEEES Subcode:
T12</DescText>

            <DesigText>OBT</DesigText>
        </Fee>
        <TaxSummary>
            <TotalTaxAmount>109.68</TotalTaxAmount>
        </TaxSummary>
    </Price>
</OfferItem>
</Offer>
<Offer>
    <OfferID>SULL-7205623657604005066-2</OfferID>
    <OwnerCode>6X</OwnerCode>
    <JourneyOverview>
        <PriceClassRefID>-ALL-</PriceClassRefID>
        <JourneyPriceClass>
            <PaxJourneyRefID>FLT3</PaxJourneyRefID>
        </JourneyPriceClass>
        <JourneyPriceClass>
            <PaxJourneyRefID>FLT4</PaxJourneyRefID>
        </JourneyPriceClass>
    </JourneyOverview>
    <OfferItem>
        <OfferItemID>SULL-7205623657604005066-2-1</OfferItemID>
        <MandatoryInd>>true</MandatoryInd>
        <FareDetail>
            <PassengerRefs>PAX1 PAX2</PassengerRefs>
            <Price>
                <TotalAmount>
                    <DetailCurrencyPrice>
                        <Total>2408.84</Total>
                    <Fees>
                        <Total>72.00</Total>
                        <Breakdown>
                            <Fee>
                                <Amount>72.00</Amount>
                            </Fee>
                        </Breakdown>
                    </Fees>
                </TotalAmount>
            </Price>
        </FareDetail>
        <Designator>OBT</Designator>
        <Description>Description: OBFEEES Subcode: T12</Description>
    </OfferItem>
</Offer>
</Fees>

```

```

        </DetailCurrencyPrice>
    </TotalAmount>
    <BaseAmount>2282.00</BaseAmount>
    <Taxes>
        <Total>54.84</Total>
    </Taxes>
</Price>
</FareDetail>
<FareDetail>
    <PassengerRefs>PAX1 PAX2</PassengerRefs>
    <Price>
        <TotalAmount>
            <DetailCurrencyPrice>
                <Total>2408.84</Total>
            </DetailCurrencyPrice>
        </TotalAmount>
        <BaseAmount>2282.00</BaseAmount>
        <Taxes>
            <Total>54.84</Total>
        </Taxes>
    </Price>
    <FareComponent>
        <FareBasis>
            <FareBasisCode>
                CIF
            </FareBasisCode>
            <RBD>C</RBD>
            <CabinType>
                <CabinTypeCode xsi:type="xs:string"
xmlxsi="http://www.w3.org/2001/XMLSchema-instance"
xmlxs="http://www.w3.org/2001/XMLSchema">C</CabinTypeCode>
                <CabinTypeName xsi:type="xs:string"
xmlxsi="http://www.w3.org/2001/XMLSchema-instance"
xmlxs="http://www.w3.org/2001/XMLSchema">Business</CabinTypeName>
            </CabinType>
        </FareBasis>
        <PriceClassRef>-ALL-</PriceClassRef>
        <SegmentRefs>SEG4</SegmentRefs>
    </FareComponent>
    <FareComponent>
        <FareBasis>
            <FareBasisCode>
                CIF
            </FareBasisCode>
            <RBD>C</RBD>
            <CabinType>
                <CabinTypeCode xsi:type="xs:string"
xmlxsi="http://www.w3.org/2001/XMLSchema-instance"
xmlxs="http://www.w3.org/2001/XMLSchema">C</CabinTypeCode>
                <CabinTypeName xsi:type="xs:string"
xmlxsi="http://www.w3.org/2001/XMLSchema-instance"
xmlxs="http://www.w3.org/2001/XMLSchema">Business</CabinTypeName>
            </CabinType>
        </FareBasis>
        <PriceClassRef>-ALL-</PriceClassRef>
        <SegmentRefs>SEG16</SegmentRefs>
    </FareComponent>
</FareDetail>
<Service>
    <ServiceID>1</ServiceID>
    <PaxRefID>PAX1</PaxRefID>
    <PaxRefID>PAX2</PaxRefID>
    <ServiceAssociations>
        <PaxJourneyRefID>FLT3</PaxJourneyRefID>

```

```

        </ServiceAssociations>
    </Service>
    <Service>
        <ServiceID>2</ServiceID>
        <PaxRefID>PAX1</PaxRefID>
        <PaxRefID>PAX2</PaxRefID>
        <ServiceAssociations>
            <PaxJourneyRefID>FLT4</PaxJourneyRefID>
        </ServiceAssociations>
    </Service>
    <Price>
        <TotalAmount>4817.68</TotalAmount>
        <BaseAmount>4564.00</BaseAmount>
        <Fee>
            <Amount>144.00</Amount>
            <DescText>Description: OBFEE$ Subcode:
T12</DescText>
            <DesigText>OBT</DesigText>
        </Fee>
        <TaxSummary>
            <TotalTaxAmount>109.68</TotalTaxAmount>
        </TaxSummary>
    </Price>
</OfferItem>
</Offer>
<CarrierOffersSummary>
    <MatchedOfferQty>2</MatchedOfferQty>
</CarrierOffersSummary>
</CarrierOffers>
</OffersGroup>

    <Other>
        <OtherMetadata>
            <CurrencyMetadatas>
                <CurrencyMetadata MetadataKey="CUREUR">
                    <Name>EUR</Name>
                </CurrencyMetadata>
            </CurrencyMetadatas>
        </OtherMetadata>
    </Other>

</ShoppingResponse>
    <ShoppingResponseID>SULL-7205623657604005066</ShoppingResponseID>
</ShoppingResponse>

```

```
</Response>
```

```
</AirShoppingRS>
```

5.2 Use case 2

5.2.1 Use Case Description

Simple upsell request with two passengers:

- **Upsell request**
- **2 PAX ADT**
- **Round Trip**
- **ITI mode**

- **Included ancillary services from Fare Family**
- **Chargeable ancillary services**

5.2.2 Preconditions

General prerequisites for the Airshopping transaction specified in section 1.5

5.2.3 Query

```
<AirShoppingRQ xmlns="http://www.iata.org/IATA/2015/00/2018.1/AirShoppingRQ">
  <PayloadAttributes>
    <Version>18.1</Version>
  </PayloadAttributes>
  <Party>
    <Sender>
      <EnabledSystem>
        <SystemID>token</SystemID>
      </EnabledSystem>
    </Sender>
  </Party>
  <Request>
    <FlightRequest>
      <OriginDestRequest>
        <DestArrivalRequest>
          <IATA_LocationCode>HEL</IATA_LocationCode>
        </DestArrivalRequest>
        <OriginDepRequest>
          <IATA_LocationCode>PAR</IATA_LocationCode>
          <Date>2018-10-24</Date>
        </OriginDepRequest>
      </OriginDestRequest>
      <OriginDestRequest>
        <OriginDepRequest>
          <IATA_LocationCode>HEL</IATA_LocationCode>
          <Date>2018-11-2</Date>
        </OriginDepRequest>
        <DestArrivalRequest>
          <IATA_LocationCode>PAR</IATA_LocationCode>
        </DestArrivalRequest>
      </OriginDestRequest>
    </FlightRequest>
    <Paxs>
      <Pax>
        <PaxID>ADT1</PaxID>
        <PTC>ADT</PTC>
      </Pax>
      <Pax>
        <PaxID>ADT2</PaxID>
        <PTC>ADT</PTC>
      </Pax>
    </Paxs>
    <ResponseParameters>
      <CurParameter>
        <CurCode>EUR</CurCode>
      </CurParameter>
    </ResponseParameters>
    <ShoppingCriteria>
      <CarrierCriteria>
        <Carrier>
          <AirlineDesigCode>6X</AirlineDesigCode>
        </Carrier>
      </CarrierCriteria>
      <FarePreferences>
```



```

        <FareCodes>
            <Code>
                <Code>NDCSEATW</Code>
            </Code>
        </FareCodes>
    </FarePreferences>
</ShoppingCriteria>
</Request>
</AirShoppingRQ>

```

5.2.4 Reply

```

<AirShoppingRS xmlns="http://www.iata.org/IATA/2015/00/2018.1/AirShoppingRQ"
xmlns:ns2="http://www.iata.org/IATA/2015/00/2018.1/AirShoppingRS">
  <PayloadAttributes>
    <Version>18.1</Version>
    <CorrelationID>987456777</CorrelationID>
  </PayloadAttributes>
  <Response>
    <AirShoppingProcessing>
      <MarketingMessages>
        <MarketMessage>
          <Associations>
            <OfferAssociations>
              <Flight>
                <FlightSegmentReference ref="SEG3">
                  <ClassOfService>
                    <Code SeatsLeft="9">Y</Code>
                  </ClassOfService>
                </FlightSegmentReference>
                <FlightSegmentReference ref="SEG15">
                  <ClassOfService>
                    <Code SeatsLeft="9">Y</Code>
                  </ClassOfService>
                </FlightSegmentReference>
                <FlightSegmentReference ref="SEG16">
                  <ClassOfService>
                    <Code SeatsLeft="9">Y</Code>
                  </ClassOfService>
                </FlightSegmentReference>
                <FlightSegmentReference ref="SEG4">
                  <ClassOfService>
                    <Code SeatsLeft="9">Y</Code>
                  </ClassOfService>
                </FlightSegmentReference>
              </Flight>
            </OfferAssociations>
          </Associations>
        </MarketMessage>
      </MarketingMessages>
    </AirShoppingProcessing>
    <DataLists>
      <OriginDestList>
        <OriginDest>
          <OriginDestID>HELCDG</OriginDestID>
          <OriginCode>HEL</OriginCode>
          <DestCode>CDG</DestCode>
          <PaxJourneyRefID>FLT4</PaxJourneyRefID>
          <PaxJourneyRefID>FLT2</PaxJourneyRefID>
        </OriginDest>
        <OriginDest>
          <OriginDestID>CDGHEL</OriginDestID>
          <OriginCode>CDG</OriginCode>

```

```

                <DestCode>HEL</DestCode>
                <PaxJourneyRefID>FLT1</PaxJourneyRefID>
                <PaxJourneyRefID>FLT3</PaxJourneyRefID>
            </OriginDest>
        </OriginDestList>
        <PaxJourneyList>
            <PaxJourney>
                <PaxJourneyID>FLT1</PaxJourneyID>
                <Duration>PT2H55M</Duration>
                <PaxSegmentRefID>SEG3</PaxSegmentRefID>
            </PaxJourney>
            <PaxJourney>
                <PaxJourneyID>FLT4</PaxJourneyID>
                <Duration>PT3H5M</Duration>
                <PaxSegmentRefID>SEG16</PaxSegmentRefID>
            </PaxJourney>
            <PaxJourney>
                <PaxJourneyID>FLT3</PaxJourneyID>
                <Duration>PT2H55M</Duration>
                <PaxSegmentRefID>SEG4</PaxSegmentRefID>
            </PaxJourney>
            <PaxJourney>
                <PaxJourneyID>FLT2</PaxJourneyID>
                <Duration>PT3H5M</Duration>
                <PaxSegmentRefID>SEG15</PaxSegmentRefID>
            </PaxJourney>
        </PaxJourneyList>
        <PaxList>
            <Pax>
                <PaxID>PAX1</PaxID>
                <PTC>ADT</PTC>
            </Pax>
            <Pax>
                <PaxID>PAX2</PaxID>
                <PTC>ADT</PTC>
            </Pax>
        </PaxList>
        <PaxSegmentList>
            <PaxSegment>
                <PaxSegmentID>SEG3</PaxSegmentID>
                <Dep>
                    <IATA_LocationCode>CDG</IATA_LocationCode>
                    <AircraftScheduledDateTime>2018-10-
24T15:25:00</AircraftScheduledDateTime>
                </Dep>
                <Arrival>
                    <IATA_LocationCode>HEL</IATA_LocationCode>
                    <AircraftScheduledDateTime>2018-10-
24T19:20:00</AircraftScheduledDateTime>
                </Arrival>
                <MarketingCarrierInfo>
                    <CarrierDesigCode>6X</CarrierDesigCode>
                </MarketingCarrierInfo>
                <MarketingCarrierFlightNumberText>3618</MarketingCarrierFlightNumberText>
                </MarketingCarrierInfo>
                <OperatingCarrierInfo>
                    <CarrierDesigCode>6X</CarrierDesigCode>
                </OperatingCarrierInfo>
            </PaxSegment>
            <PaxSegment>
                <PaxSegmentID>SEG15</PaxSegmentID>
                <Dep>
                    <IATA_LocationCode>HEL</IATA_LocationCode>
                    <AircraftScheduledDateTime>2018-11-
02T07:35:00</AircraftScheduledDateTime>
                </Dep>

```

```

        <Arrival>
            <IATA_LocationCode>CDG</IATA_LocationCode>
            <AircraftScheduledDateTime>2018-11-
02T09:40:00</AircraftScheduledDateTime>
        </Arrival>
        <MarketingCarrierInfo>
            <CarrierDesigCode>6X</CarrierDesigCode>

        <MarketingCarrierFlightNumberText>3616</MarketingCarrierFlightNumberText>
        </MarketingCarrierInfo>
        <OperatingCarrierInfo>
            <CarrierDesigCode>6X</CarrierDesigCode>
        </OperatingCarrierInfo>
    </PaxSegment>
    <PaxSegment>
        <PaxSegmentID>SEG16</PaxSegmentID>
        <Dep>
            <IATA_LocationCode>HEL</IATA_LocationCode>
            <AircraftScheduledDateTime>2018-11-
02T12:15:00</AircraftScheduledDateTime>
        </Dep>
        <Arrival>
            <IATA_LocationCode>CDG</IATA_LocationCode>
            <AircraftScheduledDateTime>2018-11-
02T14:20:00</AircraftScheduledDateTime>
        </Arrival>
        <MarketingCarrierInfo>
            <CarrierDesigCode>6X</CarrierDesigCode>

        <MarketingCarrierFlightNumberText>3617</MarketingCarrierFlightNumberText>
        </MarketingCarrierInfo>
        <OperatingCarrierInfo>
            <CarrierDesigCode>6X</CarrierDesigCode>
        </OperatingCarrierInfo>
    </PaxSegment>
    <PaxSegment>
        <PaxSegmentID>SEG4</PaxSegmentID>
        <Dep>
            <IATA_LocationCode>CDG</IATA_LocationCode>
            <AircraftScheduledDateTime>2018-10-
24T15:25:00</AircraftScheduledDateTime>
        </Dep>
        <Arrival>
            <IATA_LocationCode>HEL</IATA_LocationCode>
            <AircraftScheduledDateTime>2018-10-
24T19:20:00</AircraftScheduledDateTime>
        </Arrival>
        <MarketingCarrierInfo>
            <CarrierDesigCode>6X</CarrierDesigCode>

        <MarketingCarrierFlightNumberText>9978</MarketingCarrierFlightNumberText>
        </MarketingCarrierInfo>
        <OperatingCarrierInfo>
            <CarrierDesigCode>6X</CarrierDesigCode>
        </OperatingCarrierInfo>
    </PaxSegment>
</PaxSegmentList>
<PriceClassList>
    <PriceClass>
        <PriceClassID>ECONOMY</PriceClassID>
        <Name>ECONOMY</Name>
    </PriceClass>
</PriceClassList>
<SeatProfileList>
    <SeatProfile>
        <SeatProfileID>SP2</SeatProfileID>

```

```

        <CharacteristicCode>W</CharacteristicCode>
    </SeatProfile>
    <SeatProfile>
        <SeatProfileID>SP4</SeatProfileID>
        <CharacteristicCode>CH</CharacteristicCode>
    </SeatProfile>
    <SeatProfile>
        <SeatProfileID>SP3</SeatProfileID>
        <CharacteristicCode>O</CharacteristicCode>
    </SeatProfile>
    <SeatProfile>
        <SeatProfileID>SP5</SeatProfileID>
        <CharacteristicCode>K</CharacteristicCode>
    </SeatProfile>
    <SeatProfile>
        <SeatProfileID>SP1</SeatProfileID>
        <CharacteristicCode>L</CharacteristicCode>
    </SeatProfile>
</SeatProfileList>
<ServiceDefinitionList>
    <ServiceDefinition>
        <ServiceDefinitionID>SRV5</ServiceDefinitionID>
        <OwnerCode>6X</OwnerCode>
        <Name>SEAT</Name>
        <ServiceCode>SIT</ServiceCode>
        <ReasonForIssuanceCode>A</ReasonForIssuanceCode>
        <ReasonForIssuanceSubCode>0B5</ReasonForIssuanceSubCode>
        <Description>
            <DescID>D1</DescID>
            <DescText>Group: SA</DescText>
        </Description>
        <Description>
            <DescID>D1</DescID>
            <DescText>Classification: F</DescText>
        </Description>
        <Description>
            <DescID>D1</DescID>
            <DescText>Seat characteristics: [L]</DescText>
        </Description>
        <ServiceDefinitionAssociation>
            <SeatProfileRefID>SP1</SeatProfileRefID>
        </ServiceDefinitionAssociation>
    </ServiceDefinition>
    <ServiceDefinition>
        <ServiceDefinitionID>SRV1</ServiceDefinitionID>
        <OwnerCode>6X</OwnerCode>
        <Name>SEAT</Name>
        <ServiceCode>SIT</ServiceCode>
        <ReasonForIssuanceCode>A</ReasonForIssuanceCode>
        <ReasonForIssuanceSubCode>0B5</ReasonForIssuanceSubCode>
        <Description>
            <DescID>D1</DescID>
            <DescText>Group: SA</DescText>
        </Description>
        <Description>
            <DescID>D1</DescID>
            <DescText>Classification: F</DescText>
        </Description>
        <Description>
            <DescID>D1</DescID>
            <DescText>Seat characteristics: [W]</DescText>
        </Description>
        <ServiceDefinitionAssociation>
            <SeatProfileRefID>SP2</SeatProfileRefID>
        </ServiceDefinitionAssociation>
    </ServiceDefinition>

```

```

<ServiceDefinition>
  <ServiceDefinitionID>SRV6</ServiceDefinitionID>
  <OwnerCode>6X</OwnerCode>
  <Name>SEAT</Name>
  <ServiceCode>SIT</ServiceCode>
  <ReasonForIssuanceCode>A</ReasonForIssuanceCode>
  <ReasonForIssuanceSubCode>0B5</ReasonForIssuanceSubCode>
  <Description>
    <DescID>D1</DescID>
    <DescText>Group: SA</DescText>
  </Description>
  <Description>
    <DescID>D1</DescID>
    <DescText>Classification: F</DescText>
  </Description>
  <Description>
    <DescID>D1</DescID>
    <DescText>Seat characteristics: [0]</DescText>
  </Description>
  <ServiceDefinitionAssociation>
    <SeatProfileRefID>SP3</SeatProfileRefID>
  </ServiceDefinitionAssociation>
</ServiceDefinition>
<ServiceDefinition>
  <ServiceDefinitionID>SRV3</ServiceDefinitionID>
  <OwnerCode>6X</OwnerCode>
  <Name>SEAT</Name>
  <ServiceCode>SIT</ServiceCode>
  <ReasonForIssuanceCode>A</ReasonForIssuanceCode>
  <ReasonForIssuanceSubCode>0B5</ReasonForIssuanceSubCode>
  <Description>
    <DescID>D1</DescID>
    <DescText>Group: SA</DescText>
  </Description>
  <Description>
    <DescID>D1</DescID>
    <DescText>Classification: F</DescText>
  </Description>
  <Description>
    <DescID>D1</DescID>
    <DescText>Seat characteristics: [CH]</DescText>
  </Description>
  <ServiceDefinitionAssociation>
    <SeatProfileRefID>SP4</SeatProfileRefID>
  </ServiceDefinitionAssociation>
</ServiceDefinition>
<ServiceDefinition>
  <ServiceDefinitionID>SRV2</ServiceDefinitionID>
  <OwnerCode>6X</OwnerCode>
  <Name>PRE PAID BAGGAGE</Name>
  <ServiceCode>XBAG</ServiceCode>
  <ReasonForIssuanceCode>C</ReasonForIssuanceCode>
  <ReasonForIssuanceSubCode>0AA</ReasonForIssuanceSubCode>
  <Description>
    <DescID>D1</DescID>
    <DescText>Group: BG</DescText>
  </Description>
  <Description>
    <DescID>D1</DescID>
    <DescText>Classification: F</DescText>
  </Description>
  <Description>
    <DescID>D1</DescID>
    <Media>
      <MediaID>71182508</MediaID>
    </Media>
  </Description>

```

```

        </Description>
    </ServiceDefinition>
    <ServiceDefinition>
        <ServiceDefinitionID>SRV4</ServiceDefinitionID>
        <OwnerCode>6X</OwnerCode>
        <Name>SEAT</Name>
        <ServiceCode>SIT</ServiceCode>
        <ReasonForIssuanceCode>A</ReasonForIssuanceCode>
        <ReasonForIssuanceSubCode>0B5</ReasonForIssuanceSubCode>
        <Description>
            <DescID>D1</DescID>
            <DescText>Group: SA</DescText>
        </Description>
        <Description>
            <DescID>D1</DescID>
            <DescText>Classification: F</DescText>
        </Description>
        <Description>
            <DescID>D1</DescID>
            <DescText>Seat characteristics: [K]</DescText>
        </Description>
        <ServiceDefinitionAssociation>
            <SeatProfileRefID>SP5</SeatProfileRefID>
        </ServiceDefinitionAssociation>
    </ServiceDefinition>
</ServiceDefinitionList>
</DataLists>
<OffersGroup>
    <CarrierOffers>
        <Offer>
            <OfferID>SULL-675674816223202718-1</OfferID>
            <OwnerCode>6X</OwnerCode>
            <JourneyOverview>
                <PriceClassRefID>ECONOMY</PriceClassRefID>
                <JourneyPriceClass>
                    <PaxJourneyRefID>FLT1</PaxJourneyRefID>
                </JourneyPriceClass>
                <JourneyPriceClass>
                    <PaxJourneyRefID>FLT2</PaxJourneyRefID>
                </JourneyPriceClass>
            </JourneyOverview>
            <OfferItem>
                <OfferItemID>SULL-675674816223202718-1-1</OfferItemID>
                <MandatoryInd>true</MandatoryInd>
                <FareDetail>
                    <PassengerRefs>PAX1 PAX2</PassengerRefs>
                    <Price>
                        <TotalAmount>
                            <DetailCurrencyPrice>
                                <Total>2398.70</Total>
                            </DetailCurrencyPrice>
                        </TotalAmount>
                        <BaseAmount>2282.00</BaseAmount>
                        <Taxes>
                            <Total>44.70</Total>
                        </Taxes>
                    </Price>
                    <FareComponent>
                        <FareBasis>
                            <FareBasisCode>
                                <Code>YIF</Code>
                            </FareBasisCode>
                            <RBD>Y</RBD>
                            <CabinType>
                                <CabinTypeCode>M</CabinTypeCode>
                                <CabinTypeName>Economic

```

```

Standard</CabinTypeName>
    </CabinType>
    </FareBasis>
    <PriceClassRef>ECONOMY</PriceClassRef>
    <SegmentRefs>SEG3</SegmentRefs>
</FareComponent>
<FareComponent>
    <FareBasis>
        <FareBasisCode>
            <Code>YIF</Code>
        </FareBasisCode>
        <RBD>Y</RBD>
        <CabinType>
            <CabinTypeCode>M</CabinTypeCode>
            <CabinTypeName>Economic
Standard</CabinTypeName>
    </CabinType>
    </FareBasis>
    <PriceClassRef>ECONOMY</PriceClassRef>
    <SegmentRefs>SEG15</SegmentRefs>
</FareComponent>
</FareDetail>
<Service>
    <ServiceID>1</ServiceID>
    <PaxRefID>PAX1</PaxRefID>
    <PaxRefID>PAX2</PaxRefID>
    <ServiceAssociations>
        <PaxJourneyRefID>FLT1</PaxJourneyRefID>
        <PaxJourneyRefID>FLT2</PaxJourneyRefID>
    </ServiceAssociations>
</Service>
<Service>
    <ServiceID>2</ServiceID>
    <PaxRefID>PAX1</PaxRefID>
    <ServiceAssociations>
        <ServiceDefinitionRef>
<ServiceDefinitionRefID>SRV1</ServiceDefinitionRefID>
            </ServiceDefinitionRef>
        </ServiceAssociations>
</Service>
<Service>
    <ServiceID>3</ServiceID>
    <PaxRefID>PAX2</PaxRefID>
    <ServiceAssociations>
        <ServiceDefinitionRef>
<ServiceDefinitionRefID>SRV1</ServiceDefinitionRefID>
            </ServiceDefinitionRef>
        </ServiceAssociations>
</Service>
<Price>
    <TotalAmount>4797.40</TotalAmount>
    <BaseAmount>4564.00</BaseAmount>
    <Fee>
        <Amount>144.00</Amount>
        <DescText>Description: OBFEEES Subcode:
T12</DescText>
            <DesigText>OBT</DesigText>
    </Fee>
    <TaxSummary>
        <TotalTaxAmount>89.40</TotalTaxAmount>
    </TaxSummary>
</Price>
</OfferItem>
<OfferItem>

```

```

    <OfferItemID>SULL-675674816223202718-1-2</OfferItemID>
    <MandatoryInd>>false</MandatoryInd>
    <Service>
      <ServiceID>1</ServiceID>
      <PaxRefID>PAX1</PaxRefID>
      <ServiceAssociations>
        <ServiceDefinitionRef>
          <ServiceDefinitionRefID>SRV2</ServiceDefinitionRefID>
            <PaxSegmentRefID>SEG3</PaxSegmentRefID>
            <PaxSegmentRefID>SEG15</PaxSegmentRefID>
          </ServiceDefinitionRef>
        </ServiceAssociations>
      </Service>
    <Price>
      <TotalAmount>30.00</TotalAmount>
    </Price>
  </OfferItem>
<OfferItem>
  <OfferItemID>SULL-675674816223202718-1-3</OfferItemID>
  <MandatoryInd>>false</MandatoryInd>
  <Service>
    <ServiceID>1</ServiceID>
    <PaxRefID>PAX2</PaxRefID>
    <ServiceAssociations>
      <ServiceDefinitionRef>
        <ServiceDefinitionRefID>SRV2</ServiceDefinitionRefID>
          <PaxSegmentRefID>SEG3</PaxSegmentRefID>
          <PaxSegmentRefID>SEG15</PaxSegmentRefID>
        </ServiceDefinitionRef>
      </ServiceAssociations>
    </Service>
  <Price>
    <TotalAmount>30.00</TotalAmount>
  </Price>
</OfferItem>
<OfferItem>
  <OfferItemID>SULL-675674816223202718-1-4</OfferItemID>
  <MandatoryInd>>false</MandatoryInd>
  <Service>
    <ServiceID>1</ServiceID>
    <PaxRefID>PAX1</PaxRefID>
    <ServiceAssociations>
      <ServiceDefinitionRef>
        <ServiceDefinitionRefID>SRV3</ServiceDefinitionRefID>
          <PaxSegmentRefID>SEG3</PaxSegmentRefID>
          <PaxSegmentRefID>SEG15</PaxSegmentRefID>
        </ServiceDefinitionRef>
      </ServiceAssociations>
    </Service>
  <Price>
    <TotalAmount>180.00</TotalAmount>
  </Price>
</OfferItem>
<OfferItem>
  <OfferItemID>SULL-675674816223202718-1-5</OfferItemID>
  <MandatoryInd>>false</MandatoryInd>
  <Service>
    <ServiceID>1</ServiceID>
    <PaxRefID>PAX2</PaxRefID>
    <ServiceAssociations>
      <ServiceDefinitionRef>
        <ServiceDefinitionRefID>SRV3</ServiceDefinitionRe fID>

```



```

                <PaxSegmentRefID>SEG3</PaxSegmentRefID>
                <PaxSegmentRefID>SEG15</PaxSegmentRefID>
            </ServiceDefinitionRef>
        </ServiceAssociations>
    </Service>
    <Price>
        <TotalAmount>180.00</TotalAmount>
    </Price>
</OfferItem>
<OfferItem>
    <OfferItemID>SULL-675674816223202718-1-6</OfferItemID>
    <MandatoryInd>>false</MandatoryInd>
    <Service>
        <ServiceID>1</ServiceID>
        <PaxRefID>PAX1</PaxRefID>
        <ServiceAssociations>
            <ServiceDefinitionRef>
                <PaxSegmentRefID>SEG3</PaxSegmentRefID>
                <PaxSegmentRefID>SEG15</PaxSegmentRefID>
            </ServiceDefinitionRef>
        </ServiceAssociations>
    </Service>
    <Price>
        <TotalAmount>180.00</TotalAmount>
    </Price>
</OfferItem>
<OfferItem>
    <OfferItemID>SULL-675674816223202718-1-7</OfferItemID>
    <MandatoryInd>>false</MandatoryInd>
    <Service>
        <ServiceID>1</ServiceID>
        <PaxRefID>PAX2</PaxRefID>
        <ServiceAssociations>
            <ServiceDefinitionRef>
                <PaxSegmentRefID>SEG3</PaxSegmentRefID>
                <PaxSegmentRefID>SEG15</PaxSegmentRefID>
            </ServiceDefinitionRef>
        </ServiceAssociations>
    </Service>
    <Price>
        <TotalAmount>180.00</TotalAmount>
    </Price>
</OfferItem>
<OfferItem>
    <OfferItemID>SULL-675674816223202718-1-8</OfferItemID>
    <MandatoryInd>>false</MandatoryInd>
    <Service>
        <ServiceID>1</ServiceID>
        <PaxRefID>PAX1</PaxRefID>
        <ServiceAssociations>
            <ServiceDefinitionRef>
                <PaxSegmentRefID>SEG3</PaxSegmentRefID>
                <PaxSegmentRefID>SEG15</PaxSegmentRefID>
            </ServiceDefinitionRef>
        </ServiceAssociations>
    </Service>
    <Price>
        <TotalAmount>180.00</TotalAmount>
    </Price>
</OfferItem>
</OfferItem>

```

```

    <OfferItem>
      <OfferItemID>SULL-675674816223202718-1-9</OfferItemID>
      <MandatoryInd>>false</MandatoryInd>
      <Service>
        <ServiceID>1</ServiceID>
        <PaxRefID>PAX2</PaxRefID>
        <ServiceAssociations>
          <ServiceDefinitionRef>
<ServiceDefinitionRefID>SRV5</ServiceDefinitionRefID>
          <PaxSegmentRefID>SEG3</PaxSegmentRefID>
          <PaxSegmentRefID>SEG15</PaxSegmentRefID>
          </ServiceDefinitionRef>
        </ServiceAssociations>
      </Service>
    </Price>
    <Price>
      <TotalAmount>180.00</TotalAmount>
    </Price>
  </OfferItem>
  <OfferItem>
    <OfferItemID>SULL-675674816223202718-1-10</OfferItemID>
    <MandatoryInd>>false</MandatoryInd>
    <Service>
      <ServiceID>1</ServiceID>
      <PaxRefID>PAX1</PaxRefID>
      <ServiceAssociations>
        <ServiceDefinitionRef>
<ServiceDefinitionRefID>SRV6</ServiceDefinitionRefID>
          <PaxSegmentRefID>SEG3</PaxSegmentRefID>
          <PaxSegmentRefID>SEG15</PaxSegmentRefID>
          </ServiceDefinitionRef>
        </ServiceAssociations>
      </Service>
    </Price>
    <Price>
      <TotalAmount>180.00</TotalAmount>
    </Price>
  </OfferItem>
  <OfferItem>
    <OfferItemID>SULL-675674816223202718-1-11</OfferItemID>
    <MandatoryInd>>false</MandatoryInd>
    <Service>
      <ServiceID>1</ServiceID>
      <PaxRefID>PAX2</PaxRefID>
      <ServiceAssociations>
        <ServiceDefinitionRef>
<ServiceDefinitionRefID>SRV6</ServiceDefinitionRefID>
          <PaxSegmentRefID>SEG3</PaxSegmentRefID>
          <PaxSegmentRefID>SEG15</PaxSegmentRefID>
          </ServiceDefinitionRef>
        </ServiceAssociations>
      </Service>
    </Price>
    <Price>
      <TotalAmount>180.00</TotalAmount>
    </Price>
  </OfferItem>
</Offer>
<Offer>
  <OfferID>SULL-675674816223202718-2</OfferID>
  <OwnerCode>6X</OwnerCode>
  <JourneyOverview>
    <PriceClassRefID>ECONOMY</PriceClassRefID>
    <JourneyPriceClass>
      <PaxJourneyRefID>FLT3</PaxJourneyRefID>
    </JourneyPriceClass>
  </JourneyOverview>

```

```

        <JourneyPriceClass>
          <PaxJourneyRefID>FLT4</PaxJourneyRefID>
        </JourneyPriceClass>
      </JourneyOverview>
    <OfferItem>
      <OfferItemID>SULL-675674816223202718-2-1</OfferItemID>
      <MandatoryInd>true</MandatoryInd>
      <FareDetail>
        <PassengerRefs>PAX1 PAX2</PassengerRefs>
        <Price>
          <TotalAmount>
            <DetailCurrencyPrice>
              <Total>2398.70</Total>
            </DetailCurrencyPrice>
          </TotalAmount>
          <BaseAmount>2282.00</BaseAmount>
          <Taxes>
            <Total>44.70</Total>
          </Taxes>
        </Price>
        <FareComponent>
          <FareBasis>
            <FareBasisCode>
              <Code>YIF</Code>
            </FareBasisCode>
            <RBD>Y</RBD>
            <CabinType>
              <CabinTypeCode>M</CabinTypeCode>
              <CabinTypeName>Economic
Standard</CabinTypeName>
            </CabinType>
          </FareBasis>
          <PriceClassRef>ECONOMY</PriceClassRef>
          <SegmentRefs>SEG4</SegmentRefs>
        </FareComponent>
        <FareComponent>
          <FareBasis>
            <FareBasisCode>
              <Code>YIF</Code>
            </FareBasisCode>
            <RBD>Y</RBD>
            <CabinType>
              <CabinTypeCode>M</CabinTypeCode>
              <CabinTypeName>Economic
Standard</CabinTypeName>
            </CabinType>
          </FareBasis>
          <PriceClassRef>ECONOMY</PriceClassRef>
          <SegmentRefs>SEG16</SegmentRefs>
        </FareComponent>
      </FareDetail>
      <Service>
        <ServiceID>1</ServiceID>
        <PaxRefID>PAX1</PaxRefID>
        <PaxRefID>PAX2</PaxRefID>
        <ServiceAssociations>
          <PaxJourneyRefID>FLT3</PaxJourneyRefID>
          <PaxJourneyRefID>FLT4</PaxJourneyRefID>
        </ServiceAssociations>
      </Service>
      <Service>
        <ServiceID>2</ServiceID>
        <PaxRefID>PAX1</PaxRefID>
        <ServiceAssociations>
          <ServiceDefinitionRef>

```

```

<ServiceDefinitionRefID>SRV1</ServiceDefinitionRefID>
  </ServiceDefinitionRef>
  </ServiceAssociations>
</Service>
<Service>
  <ServiceID>3</ServiceID>
  <PaxRefID>PAX2</PaxRefID>
  <ServiceAssociations>
    <ServiceDefinitionRef>
      <ServiceDefinitionRefID>SRV1</ServiceDefinitionRefID>
        </ServiceDefinitionRef>
        </ServiceAssociations>
      </Service>
      <Price>
        <TotalAmount>4797.40</TotalAmount>
        <BaseAmount>4564.00</BaseAmount>
        <Fee>
          <Amount>144.00</Amount>
          <DescText>Description: OBFEEES Subcode:
T12</DescText>
          <DesigText>OBT</DesigText>
        </Fee>
        <TaxSummary>
          <TotalTaxAmount>89.40</TotalTaxAmount>
        </TaxSummary>
      </Price>
    </OfferItem>
  <OfferItem>
    <OfferItemID>SULL-675674816223202718-2-2</OfferItemID>
    <MandatoryInd>>false</MandatoryInd>
    <Service>
      <ServiceID>1</ServiceID>
      <PaxRefID>PAX1</PaxRefID>
      <ServiceAssociations>
        <ServiceDefinitionRef>
          <ServiceDefinitionRefID>SRV2</ServiceDefinitionRefID>
            <PaxSegmentRefID>SEG4</PaxSegmentRefID>
            <PaxSegmentRefID>SEG16</PaxSegmentRefID>
          </ServiceDefinitionRef>
        </ServiceAssociations>
      </Service>
      <Price>
        <TotalAmount>30.00</TotalAmount>
      </Price>
    </OfferItem>
  <OfferItem>
    <OfferItemID>SULL-675674816223202718-2-3</OfferItemID>
    <MandatoryInd>>false</MandatoryInd>
    <Service>
      <ServiceID>1</ServiceID>
      <PaxRefID>PAX2</PaxRefID>
      <ServiceAssociations>
        <ServiceDefinitionRef>
          <ServiceDefinitionRefID>SRV2</ServiceDefinitionRefID>
            <PaxSegmentRefID>SEG4</PaxSegmentRefID>
            <PaxSegmentRefID>SEG16</PaxSegmentRefID>
          </ServiceDefinitionRef>
        </ServiceAssociations>
      </Service>
      <Price>
        <TotalAmount>30.00</TotalAmount>
      </Price>
    </OfferItem>
  </OfferItem>

```

```

    <OfferItem>
      <OfferItemID>SULL-675674816223202718-2-4</OfferItemID>
      <MandatoryInd>>false</MandatoryInd>
      <Service>
        <ServiceID>1</ServiceID>
        <PaxRefID>PAX1</PaxRefID>
        <ServiceAssociations>
          <ServiceDefinitionRef>
<ServiceDefinitionRefID>SRV3</ServiceDefinitionRefID>
          <PaxSegmentRefID>SEG4</PaxSegmentRefID>
          <PaxSegmentRefID>SEG16</PaxSegmentRefID>
        </ServiceDefinitionRef>
        </ServiceAssociations>
      </Service>
    </Price>
    <TotalAmount>180.00</TotalAmount>
  </Price>
</OfferItem>
<OfferItem>
  <OfferItemID>SULL-675674816223202718-2-5</OfferItemID>
  <MandatoryInd>>false</MandatoryInd>
  <Service>
    <ServiceID>1</ServiceID>
    <PaxRefID>PAX2</PaxRefID>
    <ServiceAssociations>
      <ServiceDefinitionRef>
<ServiceDefinitionRefID>SRV3</ServiceDefinitionRefID>
      <PaxSegmentRefID>SEG4</PaxSegmentRefID>
      <PaxSegmentRefID>SEG16</PaxSegmentRefID>
    </ServiceDefinitionRef>
    </ServiceAssociations>
  </Service>
</Price>
<TotalAmount>180.00</TotalAmount>
</Price>
</OfferItem>
<OfferItem>
  <OfferItemID>SULL-675674816223202718-2-6</OfferItemID>
  <MandatoryInd>>false</MandatoryInd>
  <Service>
    <ServiceID>1</ServiceID>
    <PaxRefID>PAX1</PaxRefID>
    <ServiceAssociations>
      <ServiceDefinitionRef>
<ServiceDefinitionRefID>SRV4</ServiceDefinitionRefID>
      <PaxSegmentRefID>SEG4</PaxSegmentRefID>
      <PaxSegmentRefID>SEG16</PaxSegmentRefID>
    </ServiceDefinitionRef>
    </ServiceAssociations>
  </Service>
</Price>
<TotalAmount>180.00</TotalAmount>
</Price>
</OfferItem>
<OfferItem>
  <OfferItemID>SULL-675674816223202718-2-7</OfferItemID>
  <MandatoryInd>>false</MandatoryInd>
  <Service>
    <ServiceID>1</ServiceID>
    <PaxRefID>PAX2</PaxRefID>
    <ServiceAssociations>
      <ServiceDefinitionRef>

```

```

<ServiceDefinitionRefID>SRV4</ServiceDefinitionRefID>
      <PaxSegmentRefID>SEG4</PaxSegmentRefID>
      <PaxSegmentRefID>SEG16</PaxSegmentRefID>
    </ServiceDefinitionRef>
  </ServiceAssociations>
</Service>
<Price>
  <TotalAmount>180.00</TotalAmount>
</Price>
</OfferItem>
<OfferItem>
  <OfferItemID>SULL-675674816223202718-2-8</OfferItemID>
  <MandatoryInd>>false</MandatoryInd>
  <Service>
    <ServiceID>1</ServiceID>
    <PaxRefID>PAX1</PaxRefID>
    <ServiceAssociations>
      <ServiceDefinitionRef>
        <ServiceDefinitionRefID>SRV5</ServiceDefinitionRefID>
          <PaxSegmentRefID>SEG4</PaxSegmentRefID>
          <PaxSegmentRefID>SEG16</PaxSegmentRefID>
        </ServiceDefinitionRef>
      </ServiceAssociations>
    </Service>
    <Price>
      <TotalAmount>180.00</TotalAmount>
    </Price>
  </OfferItem>
</OfferItem>
  <OfferItemID>SULL-675674816223202718-2-9</OfferItemID>
  <MandatoryInd>>false</MandatoryInd>
  <Service>
    <ServiceID>1</ServiceID>
    <PaxRefID>PAX2</PaxRefID>
    <ServiceAssociations>
      <ServiceDefinitionRef>
        <ServiceDefinitionRefID>SRV5</ServiceDefinitionRefID>
          <PaxSegmentRefID>SEG4</PaxSegmentRefID>
          <PaxSegmentRefID>SEG16</PaxSegmentRefID>
        </ServiceDefinitionRef>
      </ServiceAssociations>
    </Service>
    <Price>
      <TotalAmount>180.00</TotalAmount>
    </Price>
  </OfferItem>
</OfferItem>
  <OfferItemID>SULL-675674816223202718-2-10</OfferItemID>
  <MandatoryInd>>false</MandatoryInd>
  <Service>
    <ServiceID>1</ServiceID>
    <PaxRefID>PAX1</PaxRefID>
    <ServiceAssociations>
      <ServiceDefinitionRef>
        <ServiceDefinitionRefID>SRV6</ServiceDefinitionRefID>
          <PaxSegmentRefID>SEG4</PaxSegmentRefID>
          <PaxSegmentRefID>SEG16</PaxSegmentRefID>
        </ServiceDefinitionRef>
      </ServiceAssociations>
    </Service>
    <Price>
      <TotalAmount>180.00</TotalAmount>
    </Price>
  </OfferItem>
</OfferItem>

```

```

        </OfferItem>
        <OfferItem>
            <OfferItemID>SULL-675674816223202718-2-11</OfferItemID>
            <MandatoryInd>>false</MandatoryInd>
            <Service>
                <ServiceID>1</ServiceID>
                <PaxRefID>PAX2</PaxRefID>
                <ServiceAssociations>
                    <ServiceDefinitionRef>
<ServiceDefinitionRefID>SRV6</ServiceDefinitionRefID>
                        <PaxSegmentRefID>SEG4</PaxSegmentRefID>
                        <PaxSegmentRefID>SEG16</PaxSegmentRefID>
                    </ServiceDefinitionRef>
                </ServiceAssociations>
            </Service>
            <Price>
                <TotalAmount>180.00</TotalAmount>
            </Price>
        </OfferItem>
    </Offer>
    <CarrierOffersSummary>
        <MatchedOfferQty>2</MatchedOfferQty>
    </CarrierOffersSummary>
</CarrierOffers>
</OffersGroup>
<Metadata>
    <Other>
        <OtherMetadata>
            <CurrencyMetadatas>
                <CurrencyMetadata MetadataKey="CUREUR">
                    <Name>EUR</Name>
                </CurrencyMetadata>
            </CurrencyMetadatas>
        </OtherMetadata>
    </Other>
</Metadata>
<ShoppingResponse>
    <ShoppingResponseID>SULL-675674816223202718</ShoppingResponseID>
</ShoppingResponse>
</Response>
</AirShoppingRS>

```

5.3 Use Case 3

5.3.1 Use Case Description

Simple upsell request with one passengers:

- **Upsell request**
- **OWD mode**
- **2 PAX ADT**
- **Round Trip**

5.3.2 Preconditions

General prerequisites for the Airshopping transaction specified in section 1.5

5.3.3 Query

```

<AirShoppingRQ xmlns="http://www.iata.org/IATA/2015/00/2018.1/AirShoppingRQ">
  <PayloadAttributes>
    <Version>18.1</Version>
  </PayloadAttributes>
  <Party>
    <Sender>
      <EnabledSystem>
        <SystemID>token</SystemID>
      </EnabledSystem>
    </Sender>
  </Party>
  <Request>
    <FlightRequest>
      <OriginDestRequest>
        <DestArrivalRequest>
          <IATA_LocationCode>HEL</IATA_LocationCode>
        </DestArrivalRequest>
        <OriginDepRequest>
          <IATA_LocationCode>PAR</IATA_LocationCode>
          <Date>2018-10-24</Date>
        </OriginDepRequest>
      </OriginDestRequest>
      <OriginDestRequest>
        <CalendarDateRequest>
          <DaysBeforeNumber>0</DaysBeforeNumber>
          <DaysAfterNumber>0</DaysAfterNumber>
        </CalendarDateRequest>
        <OriginDepRequest>
          <IATA_LocationCode>HEL</IATA_LocationCode>
          <Date>2018-11-2</Date>
        </OriginDepRequest>
        <DestArrivalRequest>
          <IATA_LocationCode>PAR</IATA_LocationCode>
        </DestArrivalRequest>
      </OriginDestRequest>
    </FlightRequest>
    <Paxs>
      <Pax>
        <PaxID>ADT1</PaxID>
        <PTC>ADT</PTC>
      </Pax>
      <Pax>
        <PaxID>ADT2</PaxID>
        <PTC>ADT</PTC>
      </Pax>
    </Paxs>
    <ResponseParameters>
      <CurParameter>
        <CurCode>EUR</CurCode>
      </CurParameter>
    </ResponseParameters>
    <ShoppingCriteria>
      <CabinTypeCriteria>
        <CabinTypeName>ECO</CabinTypeName>
      </CabinTypeCriteria>
      <CarrierCriteria>
        <Carrier>
          <AirlineDesigCode>6X</AirlineDesigCode>
        </Carrier>
      </CarrierCriteria>
    </ShoppingCriteria>
  </Request>
</AirShoppingRQ>

```


5.3.4 Reply

```

<AirShoppingRS xmlns="http://www.iata.org/IATA/2015/00/2018.1/AirShoppingRQ"
xmlns:ns2="http://www.iata.org/IATA/2015/00/2018.1/AirShoppingRS">
  <PayloadAttributes>
    <Version>18.1</Version>
    <CorrelationID>987456777</CorrelationID>
  </PayloadAttributes>
  <Response>
    <AirShoppingProcessing>
      <MarketingMessages>
        <MarketMessage>
          <Associations>
            <OfferAssociations>
              <Flight>
                <FlightSegmentReference ref="SEG4">
                  <ClassOfService>
                    <Code SeatsLeft="9">C</Code>
                  </ClassOfService>
                </FlightSegmentReference>
                <FlightSegmentReference ref="SEG15">
                  <ClassOfService>
                    <Code SeatsLeft="9">C</Code>
                  </ClassOfService>
                </FlightSegmentReference>
                <FlightSegmentReference ref="SEG3">
                  <ClassOfService>
                    <Code SeatsLeft="9">C</Code>
                  </ClassOfService>
                </FlightSegmentReference>
                <FlightSegmentReference ref="SEG16">
                  <ClassOfService>
                    <Code SeatsLeft="9">C</Code>
                  </ClassOfService>
                </FlightSegmentReference>
              </Flight>
            </OfferAssociations>
          </Associations>
        </MarketMessage>
      </MarketingMessages>
    </AirShoppingProcessing>
    <DataLists>
      <OriginDestList>
        <OriginDest>
          <OriginDestID>HELCDG</OriginDestID>
          <OriginCode>HEL</OriginCode>
          <DestCode>CDG</DestCode>
          <PaxJourneyRefID>FLT4</PaxJourneyRefID>
          <PaxJourneyRefID>FLT2</PaxJourneyRefID>
        </OriginDest>
        <OriginDest>
          <OriginDestID>CDGHEL</OriginDestID>
          <OriginCode>CDG</OriginCode>
          <DestCode>HEL</DestCode>
          <PaxJourneyRefID>FLT1</PaxJourneyRefID>
          <PaxJourneyRefID>FLT3</PaxJourneyRefID>
        </OriginDest>
      </OriginDestList>
      <PaxJourneyList>

```

```

    <PaxJourney>
      <PaxJourneyID>FLT1</PaxJourneyID>
      <Duration>PT2H55M</Duration>
      <PaxSegmentRefID>SEG3</PaxSegmentRefID>
    </PaxJourney>
    <PaxJourney>
      <PaxJourneyID>FLT3</PaxJourneyID>
      <Duration>PT2H55M</Duration>
      <PaxSegmentRefID>SEG4</PaxSegmentRefID>
    </PaxJourney>
    <PaxJourney>
      <PaxJourneyID>FLT4</PaxJourneyID>
      <Duration>PT3H5M</Duration>
      <PaxSegmentRefID>SEG16</PaxSegmentRefID>
    </PaxJourney>
    <PaxJourney>
      <PaxJourneyID>FLT2</PaxJourneyID>
      <Duration>PT3H5M</Duration>
      <PaxSegmentRefID>SEG15</PaxSegmentRefID>
    </PaxJourney>
  </PaxJourneyList>
  <PaxList>
    <Pax>
      <PaxID>PAX1</PaxID>
      <PTC>ADT</PTC>
    </Pax>
    <Pax>
      <PaxID>PAX2</PaxID>
      <PTC>ADT</PTC>
    </Pax>
  </PaxList>
  <PaxSegmentList>
    <PaxSegment>
      <PaxSegmentID>SEG4</PaxSegmentID>
      <Dep>
        <IATA_LocationCode>CDG</IATA_LocationCode>
        <AircraftScheduledDateTime>2018-10-
24T15:25:00</AircraftScheduledDateTime>
      </Dep>
      <Arrival>
        <IATA_LocationCode>HEL</IATA_LocationCode>
        <AircraftScheduledDateTime>2018-10-
24T19:20:00</AircraftScheduledDateTime>
      </Arrival>
      <MarketingCarrierInfo>
        <CarrierDesigCode>6X</CarrierDesigCode>
      </MarketingCarrierInfo>
      <MarketingCarrierFlightNumberText>9978</MarketingCarrierFlightNumberText>
      </MarketingCarrierInfo>
      <OperatingCarrierInfo>
        <CarrierDesigCode>6X</CarrierDesigCode>
      </OperatingCarrierInfo>
    </PaxSegment>
    <PaxSegment>
      <PaxSegmentID>SEG15</PaxSegmentID>
      <Dep>
        <IATA_LocationCode>HEL</IATA_LocationCode>
        <AircraftScheduledDateTime>2018-11-
02T07:35:00</AircraftScheduledDateTime>
      </Dep>
      <Arrival>
        <IATA_LocationCode>CDG</IATA_LocationCode>
        <AircraftScheduledDateTime>2018-11-
02T09:40:00</AircraftScheduledDateTime>
      </Arrival>
      <MarketingCarrierInfo>

```

```

        <CarrierDesigCode>6X</CarrierDesigCode>

    <MarketingCarrierFlightNumberText>3616</MarketingCarrierFlightNumberText>
        </MarketingCarrierInfo>
        <OperatingCarrierInfo>
            <CarrierDesigCode>6X</CarrierDesigCode>
        </OperatingCarrierInfo>
    </PaxSegment>
    <PaxSegment>
        <PaxSegmentID>SEG3</PaxSegmentID>
        <Dep>
            <IATA_LocationCode>CDG</IATA_LocationCode>
            <AircraftScheduledDateTime>2018-10-
24T15:25:00</AircraftScheduledDateTime>
        </Dep>
        <Arrival>
            <IATA_LocationCode>HEL</IATA_LocationCode>
            <AircraftScheduledDateTime>2018-10-
24T19:20:00</AircraftScheduledDateTime>
        </Arrival>
        <MarketingCarrierInfo>
            <CarrierDesigCode>6X</CarrierDesigCode>

    <MarketingCarrierFlightNumberText>3618</MarketingCarrierFlightNumberText>
        </MarketingCarrierInfo>
        <OperatingCarrierInfo>
            <CarrierDesigCode>6X</CarrierDesigCode>
        </OperatingCarrierInfo>
    </PaxSegment>
    <PaxSegment>
        <PaxSegmentID>SEG16</PaxSegmentID>
        <Dep>
            <IATA_LocationCode>HEL</IATA_LocationCode>
            <AircraftScheduledDateTime>2018-11-
02T12:15:00</AircraftScheduledDateTime>
        </Dep>
        <Arrival>
            <IATA_LocationCode>CDG</IATA_LocationCode>
            <AircraftScheduledDateTime>2018-11-
02T14:20:00</AircraftScheduledDateTime>
        </Arrival>
        <MarketingCarrierInfo>
            <CarrierDesigCode>6X</CarrierDesigCode>

    <MarketingCarrierFlightNumberText>3617</MarketingCarrierFlightNumberText>
        </MarketingCarrierInfo>
        <OperatingCarrierInfo>
            <CarrierDesigCode>6X</CarrierDesigCode>
        </OperatingCarrierInfo>
    </PaxSegment>
</PaxSegmentList>
<PriceClassList>
    <PriceClass>
        <PriceClassID>-ALL-</PriceClassID>
        <Name>-ALL-</Name>
    </PriceClass>
</PriceClassList>
</DataLists>
<OffersGroup>
    <CarrierOffers>
        <Offer>
            <OfferID>SULL-3298213350403888242-1</OfferID>
            <OwnerCode>6X</OwnerCode>
            <JourneyOverview>
                <PriceClassRefID>-ALL-</PriceClassRefID>
                <JourneyPriceClass>

```

```

        <PriceClassRefID>-ALL-</PriceClassRefID>
        <PaxJourneyRefID>FLT1</PaxJourneyRefID>
    </JourneyPriceClass>
    <JourneyPriceClass>
        <PriceClassRefID>-ALL-</PriceClassRefID>
        <PaxJourneyRefID>FLT2</PaxJourneyRefID>
    </JourneyPriceClass>
</JourneyOverview>
<OfferItem>
    <OfferItemID>SULL-3298213350403888242-1-1</OfferItemID>
    <MandatoryInd>>true</MandatoryInd>
    <FareDetail>
        <Price>
            <TotalAmount>
                <DetailCurrencyPrice>
                    <Total>4817.68</Total>
                    <Details>
                        <Detail refs="FLT1">
                            <SubTotal>2434.30</SubTotal>
                            <Application>TOTAL
AMOUNT</Application>
                        </Detail>
                        <Detail refs="FLT1">
                            <SubTotal>2282.00</SubTotal>
                            <Application>BASE
AMOUNT</Application>
                        </Detail>
                        <Detail refs="FLT1">
                            <SubTotal>80.30</SubTotal>
                            <Application>TAX
AMOUNT</Application>
                        </Detail>
                        <Detail refs="FLT1">
                            <SubTotal>72.00</SubTotal>
<Application>Fee</Application>
                        </Detail>
                        <Detail refs="FLT2">
                            <SubTotal>2383.38</SubTotal>
                            <Application>TOTAL
AMOUNT</Application>
                        </Detail>
                        <Detail refs="FLT2">
                            <SubTotal>2282.00</SubTotal>
                            <Application>BASE
AMOUNT</Application>
                        </Detail>
                        <Detail refs="FLT2">
                            <SubTotal>29.38</SubTotal>
                            <Application>TAX
AMOUNT</Application>
                        </Detail>
                        <Detail refs="FLT2">
                            <SubTotal>72.00</SubTotal>
<Application>Fee</Application>
                        </Detail>
                    </Details>
                </DetailCurrencyPrice>
            </TotalAmount>
            <BaseAmount>4564.00</BaseAmount>
            <Taxes>
                <Total>109.68</Total>
            </Taxes>
        </Price>
    </FareDetail>

```

```

<FareDetail>
  <PassengerRefs>PAX1 PAX2</PassengerRefs>
  <Price>
    <TotalAmount>
      <DetailCurrencyPrice>
        <Total>2408.84</Total>
      </DetailCurrencyPrice>
    </TotalAmount>
    <BaseAmount>2282.00</BaseAmount>
    <Taxes>
      <Total>54.84</Total>
    </Taxes>
  </Price>
  <FareComponent>
    <FareBasis>
      <FareBasisCode>
        <Code>CIF</Code>
      </FareBasisCode>
      <RBD>C</RBD>
      <CabinType>
        <CabinTypeCode>C</CabinTypeCode>

<CabinTypeName>Business</CabinTypeName>
      </CabinType>
    </FareBasis>
    <PriceClassRef>-ALL-</PriceClassRef>
    <SegmentRefs>SEG3</SegmentRefs>
  </FareComponent>
  <FareComponent>
    <FareBasis>
      <FareBasisCode>
        <Code>CIF</Code>
      </FareBasisCode>
      <RBD>C</RBD>
      <CabinType>
        <CabinTypeCode>C</CabinTypeCode>

<CabinTypeName>Business</CabinTypeName>
      </CabinType>
    </FareBasis>
    <PriceClassRef>-ALL-</PriceClassRef>
    <SegmentRefs>SEG15</SegmentRefs>
  </FareComponent>
</FareDetail>
<Service>
  <ServiceID>1</ServiceID>
  <PaxRefID>PAX1</PaxRefID>
  <PaxRefID>PAX2</PaxRefID>
  <ServiceAssociations>
    <PaxJourneyRefID>FLT1</PaxJourneyRefID>
    <PaxJourneyRefID>FLT2</PaxJourneyRefID>
  </ServiceAssociations>
</Service>
<Price>
  <TotalAmount>4817.68</TotalAmount>
  <BaseAmount>4564.00</BaseAmount>
  <Fee>
    <Amount>144.00</Amount>
    <DescText>Description: OBFEEES Subcode:
T12</DescText>
    <DesigText>OBT</DesigText>
  </Fee>
  <TaxSummary>
    <TotalTaxAmount>109.68</TotalTaxAmount>
  </TaxSummary>
</Price>

```

```

        </OfferItem>
    </Offer>
    <Offer>
        <OfferID>SULL-3298213350403888242-2</OfferID>
        <OwnerCode>6X</OwnerCode>
        <JourneyOverview>
            <PriceClassRefID>-ALL-</PriceClassRefID>
            <JourneyPriceClass>
                <PriceClassRefID>-ALL-</PriceClassRefID>
                <PaxJourneyRefID>FLT3</PaxJourneyRefID>
            </JourneyPriceClass>
            <JourneyPriceClass>
                <PriceClassRefID>-ALL-</PriceClassRefID>
                <PaxJourneyRefID>FLT4</PaxJourneyRefID>
            </JourneyPriceClass>
        </JourneyOverview>
        <OfferItemID>SULL-3298213350403888242-2-1</OfferItemID>
        <MandatoryInd>>true</MandatoryInd>
        <FareDetail>
            <Price>
                <TotalAmount>
                    <DetailCurrencyPrice>
                        <Total>4817.68</Total>
                        <Details>
                            <Detail refs="FLT3">
                                <SubTotal>2434.30</SubTotal>
                                <Application>TOTAL
                            </Detail>
                            <Detail refs="FLT3">
                                <SubTotal>2282.00</SubTotal>
                                <Application>BASE
                            </Detail>
                            <Detail refs="FLT3">
                                <SubTotal>80.30</SubTotal>
                                <Application>TAX
                            </Detail>
                            <Detail refs="FLT3">
                                <SubTotal>72.00</SubTotal>
                            </Detail>
                            <Detail refs="FLT4">
                                <SubTotal>2383.38</SubTotal>
                                <Application>TOTAL
                            </Detail>
                            <Detail refs="FLT4">
                                <SubTotal>2282.00</SubTotal>
                                <Application>BASE
                            </Detail>
                            <Detail refs="FLT4">
                                <SubTotal>29.38</SubTotal>
                                <Application>TAX
                            </Detail>
                            <Detail refs="FLT4">
                                <SubTotal>72.00</SubTotal>
                            </Detail>
                        </Details>
                    </TotalAmount>
                </Price>
            </FareDetail>
        </Offer>
    </Offer>

```

```

        </DetailCurrencyPrice>
        </TotalAmount>
        <BaseAmount>4564.00</BaseAmount>
        <Taxes>
            <Total>109.68</Total>
        </Taxes>
    </Price>
</FareDetail>
<FareDetail>
    <PassengerRefs>PAX1 PAX2</PassengerRefs>
    <Price>
        <TotalAmount>
            <DetailCurrencyPrice>
                <Total>2408.84</Total>
            </DetailCurrencyPrice>
        </TotalAmount>
        <BaseAmount>2282.00</BaseAmount>
        <Taxes>
            <Total>54.84</Total>
        </Taxes>
    </Price>
    <FareComponent>
        <FareBasis>
            <FareBasisCode>
                <Code>CIF</Code>
            </FareBasisCode>
            <RBD>C</RBD>
            <CabinType>
                <CabinTypeCode>C</CabinTypeCode>
            </CabinType>
        </FareBasis>
        <CabinTypeName>Business</CabinTypeName>
    </FareComponent>
    <FareComponent>
        <FareBasis>
            <FareBasisCode>
                <Code>CIF</Code>
            </FareBasisCode>
            <RBD>C</RBD>
            <CabinType>
                <CabinTypeCode>C</CabinTypeCode>
            </CabinType>
        </FareBasis>
        <CabinTypeName>Business</CabinTypeName>
    </FareComponent>
    <FareComponent>
        <FareBasis>
            <FareBasisCode>
                <Code>CIF</Code>
            </FareBasisCode>
            <RBD>C</RBD>
            <CabinType>
                <CabinTypeCode>C</CabinTypeCode>
            </CabinType>
        </FareBasis>
        <CabinTypeName>Business</CabinTypeName>
    </FareComponent>
    <FareDetail>
        <Service>
            <ServiceID>1</ServiceID>
            <PaxRefID>PAX1</PaxRefID>
            <PaxRefID>PAX2</PaxRefID>
            <ServiceAssociations>
                <PaxJourneyRefID>FLT3</PaxJourneyRefID>
                <PaxJourneyRefID>FLT4</PaxJourneyRefID>
            </ServiceAssociations>
        </Service>
        <Price>
            <TotalAmount>4817.68</TotalAmount>
            <BaseAmount>4564.00</BaseAmount>
            <Fee>
                <Amount>144.00</Amount>
            </Fee>
        </Price>
    </FareDetail>

```

```

T12</DescText>
                                <DescText>Description: OBFEEES Subcode:
                                <DesigText>OBT</DesigText>
                                </Fee>
                                <TaxSummary>
                                    <TotalTaxAmount>109.68</TotalTaxAmount>
                                </TaxSummary>
                                </Price>
                                </OfferItem>
                            </Offer>
                            <CarrierOffersSummary>
                                <MatchedOfferQty>2</MatchedOfferQty>
                            </CarrierOffersSummary>
                        </CarrierOffers>
                    </OffersGroup>
                <Metadata>
                    <Other>
                        <OtherMetadata>
                            <CurrencyMetadatas>
                                <CurrencyMetadata MetadataKey="CUREUR">
                                    <Name>EUR</Name>
                                </CurrencyMetadata>
                            </CurrencyMetadatas>
                        </OtherMetadata>
                    </Other>
                </Metadata>
                <ShoppingResponse>
                    <ShoppingResponseID>SULL-3298213350403888242</ShoppingResponseID>
                </ShoppingResponse>
            </Response>
        </AirShoppingRS>

```

5.4 Use case 5

5.4.1 Use Case Description

- **Upsell request**
- **Itinerary mode**
- **Several price classes**
- **2 PAX (1 ADT and 1 CHD)**
- **Connections in the itinerary**

5.4.2 Preconditions

General prerequisites for the Airshopping transaction specified in section 1.5

5.4.3 Query

```

<AirShoppingRQ xmlns="http://www.iata.org/IATA/2015/00/2018.1/AirShoppingRQ">
    <PayloadAttributes>
        <Version>18.1</Version>
    </PayloadAttributes>
    <Party>
        <Sender>
            <EnabledSystem>
                <SystemID>token</SystemID>
            </EnabledSystem>

```



```

    </Sender>
  </Party>
  <Request>
    <FlightRequest>
      <OriginDestRequest>
        <DestArrivalRequest>
          <IATA_LocationCode>HEL</IATA_LocationCode>
        </DestArrivalRequest>
        <OriginDepRequest>
          <IATA_LocationCode>NCE</IATA_LocationCode>
          <Date>2018-10-24</Date>
        </OriginDepRequest>
      </OriginDestRequest>
      <OriginDestRequest>
        <OriginDepRequest>
          <IATA_LocationCode>HEL</IATA_LocationCode>
          <Date>2018-11-2</Date>
        </OriginDepRequest>
        <DestArrivalRequest>
          <IATA_LocationCode>NCE</IATA_LocationCode>
        </DestArrivalRequest>
      </OriginDestRequest>
    </FlightRequest>
    <Paxs>
      <Pax>
        <PaxID>ADT1</PaxID>
        <PTC>ADT</PTC>
      </Pax>
      <Pax>
        <PaxID>CHD1</PaxID>
        <PTC>CHD</PTC>
      </Pax>
    </Paxs>
    <ResponseParameters>
      <CurParameter>
        <CurCode>EUR</CurCode>
      </CurParameter>
    </ResponseParameters>
    <ShoppingCriteria>
      <CabinTypeCriteria>
        <CabinTypeName>ECO</CabinTypeName>
      </CabinTypeCriteria>
      <CabinTypeCriteria>
        <CabinTypeName>BUS</CabinTypeName>
      </CabinTypeCriteria>
      <CarrierCriteria>
        <Carrier>
          <AirlineDesigCode>6X</AirlineDesigCode>
        </Carrier>
      </CarrierCriteria>
    </ShoppingCriteria>
  </Request>
</AirShoppingRQ>

```

5.4.4 Reply

```

<AirShoppingRS xmlns="http://www.iata.org/IATA/2015/00/2018.1/AirShoppingRQ"
xmlns:ns2="http://www.iata.org/IATA/2015/00/2018.1/AirShoppingRS">
  <PayloadAttributes>
    <EchoTokenText>echo echo echo ...</EchoTokenText>
  </PayloadAttributes>

```

```

    <Version>18.1</Version>
    <CorrelationID>987456777</CorrelationID>
</PayloadAttributes>
<Response>
  <AirShoppingProcessing>
    <MarketingMessages>
      <MarketMessage>
        <Associations>
          <OfferAssociations>
            <Flight>
              <FlightSegmentReference ref="SEG15">
                <ClassOfService>
                  <Code SeatsLeft="9">B</Code>
                </ClassOfService>
              </FlightSegmentReference>
              <FlightSegmentReference ref="SEG15">
                <ClassOfService>
                  <Code SeatsLeft="9">C</Code>
                </ClassOfService>
              </FlightSegmentReference>
              <FlightSegmentReference ref="SEG4">
                <ClassOfService>
                  <Code SeatsLeft="9">B</Code>
                </ClassOfService>
              </FlightSegmentReference>
              <FlightSegmentReference ref="SEG14">
                <ClassOfService>
                  <Code SeatsLeft="9">B</Code>
                </ClassOfService>
              </FlightSegmentReference>
            </Flight>
          </OfferAssociations>
        </Associations>
      </MarketMessage>
    </MarketingMessages>
  </AirShoppingProcessing>
<DataLists>
  <OriginDestList>
    <OriginDest>
      <OriginDestID>NCEHEL</OriginDestID>
      <OriginCode>NCE</OriginCode>
      <DestCode>HEL</DestCode>
      <PaxJourneyRefID>FLT1</PaxJourneyRefID>
    </OriginDest>
    <OriginDest>
      <OriginDestID>HELNCE</OriginDestID>
      <OriginCode>HEL</OriginCode>
      <DestCode>NCE</DestCode>
      <PaxJourneyRefID>FLT2</PaxJourneyRefID>
    </OriginDest>
  </OriginDestList>
  <PaxJourneyList>
    <PaxJourney>
      <PaxJourneyID>FLT1</PaxJourneyID>
      <Duration>PT3H0M</Duration>
      <PaxSegmentRefID>SEG4</PaxSegmentRefID>
    </PaxJourney>
    <PaxJourney>
      <PaxJourneyID>FLT2</PaxJourneyID>
      <Duration>PT6H25M</Duration>
      <PaxSegmentRefID>SEG14</PaxSegmentRefID>
      <PaxSegmentRefID>SEG15</PaxSegmentRefID>
    </PaxJourney>
  </PaxJourneyList>
  <PaxList>
    <Pax>

```

```

        <PaxID>PAX1</PaxID>
        <PTC>ADT</PTC>
    </Pax>
    <Pax>
        <PaxID>PAX2</PaxID>
        <PTC>CHD</PTC>
    </Pax>
</PaxList>
<PaxSegmentList>
    <PaxSegment>
        <PaxSegmentID>SEG15</PaxSegmentID>
        <Dep>
            <IATA_LocationCode>LHR</IATA_LocationCode>
            <AircraftScheduledDateTime>2018-11-
02T09:55:00</AircraftScheduledDateTime>
        </Dep>
        <Arrival>
            <IATA_LocationCode>NCE</IATA_LocationCode>
            <AircraftScheduledDateTime>2018-11-
02T12:55:00</AircraftScheduledDateTime>
        </Arrival>
        <MarketingCarrierInfo>
            <CarrierDesigCode>6X</CarrierDesigCode>

        <MarketingCarrierFlightNumberText>9149</MarketingCarrierFlightNumberText>
        </MarketingCarrierInfo>
        <OperatingCarrierInfo>
            <CarrierDesigCode>6X</CarrierDesigCode>
        </OperatingCarrierInfo>
    </PaxSegment>
    <PaxSegment>
        <PaxSegmentID>SEG4</PaxSegmentID>
        <Dep>
            <IATA_LocationCode>NCE</IATA_LocationCode>
            <AircraftScheduledDateTime>2018-10-
24T08:00:00</AircraftScheduledDateTime>
        </Dep>
        <Arrival>
            <IATA_LocationCode>HEL</IATA_LocationCode>
            <AircraftScheduledDateTime>2018-10-
24T12:00:00</AircraftScheduledDateTime>
        </Arrival>
        <MarketingCarrierInfo>
            <CarrierDesigCode>6X</CarrierDesigCode>

        <MarketingCarrierFlightNumberText>9873</MarketingCarrierFlightNumberText>
        </MarketingCarrierInfo>
        <OperatingCarrierInfo>
            <CarrierDesigCode>6X</CarrierDesigCode>
        </OperatingCarrierInfo>
    </PaxSegment>
    <PaxSegment>
        <PaxSegmentID>SEG14</PaxSegmentID>
        <Dep>
            <IATA_LocationCode>HEL</IATA_LocationCode>
            <AircraftScheduledDateTime>2018-11-
02T07:30:00</AircraftScheduledDateTime>
        </Dep>
        <Arrival>
            <IATA_LocationCode>LHR</IATA_LocationCode>
            <AircraftScheduledDateTime>2018-11-
02T08:00:00</AircraftScheduledDateTime>
        </Arrival>
        <MarketingCarrierInfo>
            <CarrierDesigCode>6X</CarrierDesigCode>

```

```

<MarketingCarrierFlightNumberText>9800</MarketingCarrierFlightNumberText>
  </MarketingCarrierInfo>
  <OperatingCarrierInfo>
    <CarrierDesigCode>6X</CarrierDesigCode>
  </OperatingCarrierInfo>
</PaxSegment>
</PaxSegmentList>
<PriceClassList>
  <PriceClass>
    <PriceClassID>BUSINESS</PriceClassID>
    <Name>BUSINESS</Name>
  </PriceClass>
  <PriceClass>
    <PriceClassID>ECONOMY</PriceClassID>
    <Name>ECONOMY</Name>
  </PriceClass>
</PriceClassList>
</DataLists>
<OffersGroup>
  <CarrierOffers>
    <Offer>
      <OfferID>SULL-14244311480698399956-2</OfferID>
      <OwnerCode>6X</OwnerCode>
      <JourneyOverview>
        <PriceClassRefID>BUSINESS</PriceClassRefID>
        <JourneyPriceClass>
          <PriceClassRefID>ECONOMY</PriceClassRefID>
          <PaxJourneyRefID>FLT1</PaxJourneyRefID>
        </JourneyPriceClass>
        <JourneyPriceClass>
          <PriceClassRefID>BUSINESS</PriceClassRefID>
          <PaxJourneyRefID>FLT2</PaxJourneyRefID>
        </JourneyPriceClass>
      </JourneyOverview>
      <OfferItem>
        <OfferItemID>SULL-14244311480698399956-2-1</OfferItemID>
        <MandatoryInd>>true</MandatoryInd>
        <FareDetail>
          <Price>
            <TotalAmount>
              <DetailCurrencyPrice>
                <Total>1844.46</Total>
                <Details>
                  <Detail refs="FLT1">
                    <SubTotal>216.94</SubTotal>
                    <Application>TOTAL
AMOUNT</Application>
                  </Detail>
                  <Detail refs="FLT1">
                    <SubTotal>100.00</SubTotal>
                    <Application>BASE
AMOUNT</Application>
                  </Detail>
                  <Detail refs="FLT1">
                    <SubTotal>44.94</SubTotal>
                    <Application>TAX
AMOUNT</Application>
                  </Detail>
                  <Detail refs="FLT1">
                    <SubTotal>72.00</SubTotal>
                    <Application>Fee</Application>
                  </Detail>
                  <Detail refs="FLT2">
                    <SubTotal>1627.52</SubTotal>
                    <Application>TOTAL

```

```

AMOUNT</Application>
                                </Detail>
                                <Detail refs="FLT2">
                                  <SubTotal>1493.00</SubTotal>
                                  <Application>BASE
AMOUNT</Application>
                                </Detail>
                                <Detail refs="FLT2">
                                  <SubTotal>62.52</SubTotal>
                                  <Application>TAX
AMOUNT</Application>
                                </Detail>
                                <Detail refs="FLT2">
                                  <SubTotal>72.00</SubTotal>
<Application>Fee</Application>
                                </Detail>
                                </Details>
                                </DetailCurrencyPrice>
                                </TotalAmount>
                                <BaseAmount>1593.00</BaseAmount>
                                <Taxes>
                                  <Total>107.46</Total>
                                </Taxes>
                                </Price>
</FareDetail>
<FareDetail>
  <PassengerRefs>PAX1</PassengerRefs>
  <Price>
    <TotalAmount>
      <DetailCurrencyPrice>
        <Total>1024.73</Total>
      </DetailCurrencyPrice>
    </TotalAmount>
    <BaseAmount>899.00</BaseAmount>
    <Taxes>
      <Total>53.73</Total>
    </Taxes>
  </Price>
  <FareComponent>
    <FareBasis>
      <FareBasisCode>
        <Code>B6XCTM4</Code>
      </FareBasisCode>
      <RBD>B</RBD>
      <CabinType>
        <CabinTypeCode>M</CabinTypeCode>
        <CabinTypeName>Economic
Standard</CabinTypeName>
                                </CabinType>
                                </FareBasis>
                                <PriceClassRef>ECONOMY</PriceClassRef>
                                <SegmentRefs>SEG4</SegmentRefs>
  </FareComponent>
  <FareComponent>
    <FareBasis>
      <FareBasisCode>
        <Code>B6XCTM5</Code>
      </FareBasisCode>
      <RBD>B</RBD>
      <CabinType>
        <CabinTypeCode>M</CabinTypeCode>
        <CabinTypeName>Economic
Standard</CabinTypeName>
                                </CabinType>
                                </FareBasis>

```

```

        <PriceClassRef>ECONOMY</PriceClassRef>
        <SegmentRefs>SEG14</SegmentRefs>
    </FareComponent>
    <FareComponent>
        <FareBasis>
            <FareBasisCode>
                <Code>CIF</Code>
            </FareBasisCode>
            <RBD>C</RBD>
            <CabinType>
                <CabinTypeCode>C</CabinTypeCode>
            </CabinType>
        </FareBasis>
        <CabinTypeName>Business</CabinTypeName>
    </FareComponent>
    <PriceClassRef>BUSINESS</PriceClassRef>
    <SegmentRefs>SEG15</SegmentRefs>
</FareComponent>
</FareDetail>
<FareDetail>
    <PassengerRefs>PAX2</PassengerRefs>
    <Price>
        <TotalAmount>
            <DetailCurrencyPrice>
                <Total>819.73</Total>
            </DetailCurrencyPrice>
        </TotalAmount>
        <BaseAmount>694.00</BaseAmount>
        <Taxes>
            <Total>53.73</Total>
        </Taxes>
    </Price>
    <FareComponent>
        <FareBasis>
            <FareBasisCode>
                <Code>B6XCTM4</Code>
            </FareBasisCode>
            <RBD>B</RBD>
            <CabinType>
                <CabinTypeCode>M</CabinTypeCode>
                <CabinTypeName>Economic
Standard</CabinTypeName>
            </CabinType>
        </FareBasis>
        <PriceClassRef>ECONOMY</PriceClassRef>
        <SegmentRefs>SEG4</SegmentRefs>
    </FareComponent>
    <FareComponent>
        <FareBasis>
            <FareBasisCode>
                <Code>B6XCTM5</Code>
            </FareBasisCode>
            <RBD>B</RBD>
            <CabinType>
                <CabinTypeCode>M</CabinTypeCode>
                <CabinTypeName>Economic
Standard</CabinTypeName>
            </CabinType>
        </FareBasis>
        <PriceClassRef>ECONOMY</PriceClassRef>
        <SegmentRefs>SEG14</SegmentRefs>
    </FareComponent>
    <FareComponent>
        <FareBasis>
            <FareBasisCode>
                <Code>CIF</Code>

```

```

        </FareBasisCode>
        <RBD>C</RBD>
        <CabinType>
            <CabinTypeCode>C</CabinTypeCode>

<CabinTypeName>Business</CabinTypeName>
        </CabinType>
        </FareBasis>
        <PriceClassRef>BUSINESS</PriceClassRef>
        <SegmentRefs>SEG15</SegmentRefs>
    </FareComponent>
</FareDetail>
<Service>
    <ServiceID>1</ServiceID>
    <PaxRefID>PAX1</PaxRefID>
    <PaxRefID>PAX2</PaxRefID>
    <ServiceAssociations>
        <PaxJourneyRefID>FLT1</PaxJourneyRefID>
        <PaxJourneyRefID>FLT2</PaxJourneyRefID>
    </ServiceAssociations>
</Service>
<Price>
    <TotalAmount>1844.46</TotalAmount>
    <BaseAmount>1593.00</BaseAmount>
    <Fee>
        <Amount>144.00</Amount>
        <DescText>Description: OBFEEs Subcode:
T12</DescText>
        <DesigText>OBT</DesigText>
    </Fee>
    <TaxSummary>
        <TotalTaxAmount>107.46</TotalTaxAmount>
    </TaxSummary>
</Price>
</OfferItem>
</Offer>
<Offer>
    <OfferID>SULL-14244311480698399956-1</OfferID>
    <OwnerCode>6X</OwnerCode>
    <JourneyOverview>
        <PriceClassRefID>ECONOMY</PriceClassRefID>
        <JourneyPriceClass>
            <PriceClassRefID>ECONOMY</PriceClassRefID>
            <PaxJourneyRefID>FLT1</PaxJourneyRefID>
        </JourneyPriceClass>
        <JourneyPriceClass>
            <PriceClassRefID>ECONOMY</PriceClassRefID>
            <PaxJourneyRefID>FLT2</PaxJourneyRefID>
        </JourneyPriceClass>
    </JourneyOverview>
    <OfferItem>
        <OfferItemID>SULL-14244311480698399956-1-1</OfferItemID>
        <MandatoryInd>true</MandatoryInd>
        <FareDetail>
            <Price>
                <TotalAmount>
                    <DetailCurrencyPrice>
                        <Total>457.46</Total>
                        <Details>
                            <Detail refs="FLT1">
                                <SubTotal>216.94</SubTotal>
                                <Application>TOTAL
AMOUNT</Application>
                            </Detail>
                            <Detail refs="FLT1">
                                <SubTotal>100.00</SubTotal>

```

```

                                <Application>BASE
AMOUNT</Application>
                                </Detail>
                                <Detail refs="FLT1">
                                    <SubTotal>44.94</SubTotal>
                                <Application>TAX
AMOUNT</Application>
                                </Detail>
                                <Detail refs="FLT1">
                                    <SubTotal>72.00</SubTotal>
<Application>Fee</Application>
                                </Detail>
                                <Detail refs="FLT2">
                                    <SubTotal>240.52</SubTotal>
                                <Application>TOTAL
AMOUNT</Application>
                                </Detail>
                                <Detail refs="FLT2">
                                    <SubTotal>106.00</SubTotal>
                                <Application>BASE
AMOUNT</Application>
                                </Detail>
                                <Detail refs="FLT2">
                                    <SubTotal>62.52</SubTotal>
                                <Application>TAX
AMOUNT</Application>
                                </Detail>
                                <Detail refs="FLT2">
                                    <SubTotal>72.00</SubTotal>
<Application>Fee</Application>
                                </Detail>
                                </Details>
                                </DetailCurrencyPrice>
                                </TotalAmount>
                                <BaseAmount>206.00</BaseAmount>
                                <Taxes>
                                    <Total>107.46</Total>
                                </Taxes>
                                </Price>
                                </FareDetail>
                                <FareDetail>
                                    <PassengerRefs>PAX1</PassengerRefs>
                                    <Price>
                                        <TotalAmount>
                                            <DetailCurrencyPrice>
                                                <Total>228.73</Total>
                                            </DetailCurrencyPrice>
                                        </TotalAmount>
                                        <BaseAmount>103.00</BaseAmount>
                                        <Taxes>
                                            <Total>53.73</Total>
                                        </Taxes>
                                    </Price>
                                <FareComponent>
                                    <FareBasis>
                                        <FareBasisCode>
                                            <Code>B6XCTM4</Code>
                                        </FareBasisCode>
                                        <RBD>B</RBD>
                                        <CabinType>
                                            <CabinTypeCode>M</CabinTypeCode>
                                            <CabinTypeName>Economic
Standard</CabinTypeName>
                                </CabinType>

```



```

        </FareBasis>
        <PriceClassRef>ECONOMY</PriceClassRef>
        <SegmentRefs>SEG4</SegmentRefs>
    </FareComponent>
    <FareComponent>
        <FareBasis>
            <FareBasisCode>
                <Code>B6XCTM4</Code>
            </FareBasisCode>
            <RBD>B</RBD>
            <CabinType>
                <CabinTypeCode>M</CabinTypeCode>
                <CabinTypeName>Economic
Standard</CabinTypeName>
            </CabinType>
        </FareBasis>
        <PriceClassRef>ECONOMY</PriceClassRef>
        <SegmentRefs>SEG14</SegmentRefs>
    </FareComponent>
    <FareComponent>
        <FareBasis>
            <FareBasisCode>
                <Code>B6XCTM4</Code>
            </FareBasisCode>
            <RBD>B</RBD>
            <CabinType>
                <CabinTypeCode>M</CabinTypeCode>
                <CabinTypeName>Economic
Standard</CabinTypeName>
            </CabinType>
        </FareBasis>
        <PriceClassRef>ECONOMY</PriceClassRef>
        <SegmentRefs>SEG15</SegmentRefs>
    </FareComponent>
    </FareDetail>
    <FareDetail>
        <PassengerRefs>PAX2</PassengerRefs>
        <Price>
            <TotalAmount>
                <DetailCurrencyPrice>
                    <Total>228.73</Total>
                </DetailCurrencyPrice>
            </TotalAmount>
            <BaseAmount>103.00</BaseAmount>
            <Taxes>
                <Total>53.73</Total>
            </Taxes>
        </Price>
        <FareComponent>
            <FareBasis>
                <FareBasisCode>
                    <Code>B6XCTM4</Code>
                </FareBasisCode>
                <RBD>B</RBD>
                <CabinType>
                    <CabinTypeCode>M</CabinTypeCode>
                    <CabinTypeName>Economic
Standard</CabinTypeName>
                </CabinType>
            </FareBasis>
            <PriceClassRef>ECONOMY</PriceClassRef>
            <SegmentRefs>SEG4</SegmentRefs>
        </FareComponent>
        <FareComponent>
            <FareBasis>
                <FareBasisCode>

```

```

                <Code>B6XCTM4</Code>
            </FareBasisCode>
            <RBD>B</RBD>
            <CabinType>
                <CabinTypeCode>M</CabinTypeCode>
                <CabinTypeName>Economic
Standard</CabinTypeName>
            </CabinType>
        </FareBasis>
        <PriceClassRef>ECONOMY</PriceClassRef>
        <SegmentRefs>SEG14</SegmentRefs>
    </FareComponent>
    <FareComponent>
        <FareBasis>
            <FareBasisCode>
                <Code>B6XCTM4</Code>
            </FareBasisCode>
            <RBD>B</RBD>
            <CabinType>
                <CabinTypeCode>M</CabinTypeCode>
                <CabinTypeName>Economic
Standard</CabinTypeName>
            </CabinType>
        </FareBasis>
        <PriceClassRef>ECONOMY</PriceClassRef>
        <SegmentRefs>SEG15</SegmentRefs>
    </FareComponent>
</FareDetail>
<Service>
    <ServiceID>1</ServiceID>
    <PaxRefID>PAX1</PaxRefID>
    <PaxRefID>PAX2</PaxRefID>
    <ServiceAssociations>
        <PaxJourneyRefID>FLT1</PaxJourneyRefID>
        <PaxJourneyRefID>FLT2</PaxJourneyRefID>
    </ServiceAssociations>
</Service>
<Price>
    <TotalAmount>457.46</TotalAmount>
    <BaseAmount>206.00</BaseAmount>
    <Fee>
        <Amount>144.00</Amount>
        <DescText>Description: OBFEEs Subcode:
T12</DescText>
        <DesigText>OBT</DesigText>
    </Fee>
    <TaxSummary>
        <TotalTaxAmount>107.46</TotalTaxAmount>
    </TaxSummary>
</Price>
</OfferItem>
</Offer>
<CarrierOffersSummary>
    <MatchedOfferQty>2</MatchedOfferQty>
</CarrierOffersSummary>
</CarrierOffers>
</OffersGroup>
<Metadata>
    <Other>
        <OtherMetadata>
            <CurrencyMetadatas>
                <CurrencyMetadata MetadataKey="CUREUR">
                    <Name>EUR</Name>
                </CurrencyMetadata>
            </CurrencyMetadatas>
        </OtherMetadata>

```

```

    </Other>
  </Metadata>
  <ShoppingResponse>
    <ShoppingResponseID>SULL-14244311480698399956</ShoppingResponseID>
  </ShoppingResponse>
</Response>
</AirShoppingRS>

```

5.5 Use case 6

5.5.1 Use Case Description

- **Calendar request**
- **1 PAX (1 ADT)**
- **Round trip**

5.5.2 Preconditions

General prerequisites for the Airshopping transaction specified in section 1.5

5.5.3 Query

```

<AirShoppingRQ xmlns="http://www.iata.org/IATA/2015/00/2018.1/AirShoppingRQ">
  <PayloadAttributes>
    <Version>18.1</Version>
  </PayloadAttributes>
  <Party>
    <Sender>
      <EnabledSystem>
        <SystemID>token</SystemID>
      </EnabledSystem>
    </Sender>
  </Party>
  <Request>
    <FlightRequest>
      <OriginDestRequest>
        <DestArrivalRequest>
          <IATA_LocationCode>HEL</IATA_LocationCode>
        </DestArrivalRequest>
        <OriginDepRequest>
          <IATA_LocationCode>NCE</IATA_LocationCode>
          <Date>2018-10-24</Date>
        </OriginDepRequest>
        <CalendarDateRequest>
          <DaysBeforeNumber>3</DaysBeforeNumber>
          <DaysAfterNumber>3</DaysAfterNumber>
        </CalendarDateRequest>
      </OriginDestRequest>
      <OriginDestRequest>
        <OriginDepRequest>
          <IATA_LocationCode>HEL</IATA_LocationCode>
          <Date>2018-11-2</Date>
        </OriginDepRequest>
        <DestArrivalRequest>
          <IATA_LocationCode>NCE</IATA_LocationCode>
        </DestArrivalRequest>
        <CalendarDateRequest>
          <DaysBeforeNumber>3</DaysBeforeNumber>
          <DaysAfterNumber>3</DaysAfterNumber>
        </CalendarDateRequest>
      </OriginDestRequest>
    </FlightRequest>
  </Request>
</AirShoppingRQ>

```

```

        </CalendarDateRequest>
    </OriginDestRequest>
</FlightRequest>
<Paxs>
    <Pax>
        <PaxID>ADT1</PaxID>
        <PTC>ADT</PTC>
    </Pax>
</Paxs>
<ResponseParameters>
    <CurParameter>
        <CurCode>EUR</CurCode>
    </CurParameter>
</ResponseParameters>
<ShoppingCriteria>
    <CabinTypeCriteria>
        <CabinTypeName>ECO</CabinTypeName>
    </CabinTypeCriteria>
    <CarrierCriteria>
        <Carrier>
            <AirlineDesigCode>6X</AirlineDesigCode>
        </Carrier>
    </CarrierCriteria>
</ShoppingCriteria>
</Request>
</AirShoppingRQ>

```

5.5.4 Reply

```

<AirShoppingRS xmlns="http://www.iata.org/IATA/2015/00/2018.1/AirShoppingRQ"
xmlns:ns2="http://www.iata.org/IATA/2015/00/2018.1/AirShoppingRS">
    <PayloadAttributes>
        <EchoTokenText>echo echo echo ...</EchoTokenText>
        <Version>18.1</Version>
        <CorrelationID>987456777</CorrelationID>
    </PayloadAttributes>
    <Response>
        <OffersGroup>
            <CarrierOffers>
                <PriceCalendar>
                    <TotalPriceAmount>228.73</TotalPriceAmount>
                    <PriceCalendarDate>
                        <Date>2018-10-21</Date>
                    </PriceCalendarDate>
                    <PriceCalendarDate>
                        <Date>2018-10-30</Date>
                    </PriceCalendarDate>
                </PriceCalendar>
            </CarrierOffers>
            <PriceCalendar>
                <TotalPriceAmount>228.73</TotalPriceAmount>
                <PriceCalendarDate>
                    <Date>2018-10-21</Date>
                </PriceCalendarDate>
                <PriceCalendarDate>
                    <Date>2018-10-31</Date>
                </PriceCalendarDate>
            </PriceCalendar>
        </OffersGroup>
    </Response>
</AirShoppingRS>

```

```

        <TotalPriceAmount>228.73</TotalPriceAmount>
        <PriceCalendarDate>
            <Date>2018-10-21</Date>
        </PriceCalendarDate>
    </PriceCalendarDate>
    <PriceCalendarDate>
        <Date>2018-11-01</Date>
    </PriceCalendarDate>
</PriceCalendar>
<PriceCalendar>
    <TotalPriceAmount>228.73</TotalPriceAmount>
    <PriceCalendarDate>
        <Date>2018-10-21</Date>
    </PriceCalendarDate>
    <PriceCalendarDate>
        <Date>2018-11-02</Date>
    </PriceCalendarDate>
</PriceCalendar>
<PriceCalendar>
    <TotalPriceAmount>228.73</TotalPriceAmount>
    <PriceCalendarDate>
        <Date>2018-10-21</Date>
    </PriceCalendarDate>
    <PriceCalendarDate>
        <Date>2018-11-03</Date>
    </PriceCalendarDate>
</PriceCalendar>
<PriceCalendar>
    <TotalPriceAmount>228.73</TotalPriceAmount>
    <PriceCalendarDate>
        <Date>2018-10-21</Date>
    </PriceCalendarDate>
    <PriceCalendarDate>
        <Date>2018-11-04</Date>
    </PriceCalendarDate>
</PriceCalendar>
<PriceCalendar>
    <TotalPriceAmount>228.73</TotalPriceAmount>
    <PriceCalendarDate>
        <Date>2018-10-21</Date>
    </PriceCalendarDate>
    <PriceCalendarDate>
        <Date>2018-11-05</Date>
    </PriceCalendarDate>
</PriceCalendar>
<PriceCalendar>
    <TotalPriceAmount>228.73</TotalPriceAmount>
    <PriceCalendarDate>
        <Date>2018-10-22</Date>
    </PriceCalendarDate>
    <PriceCalendarDate>
        <Date>2018-10-30</Date>
    </PriceCalendarDate>
</PriceCalendar>
<PriceCalendar>
    <TotalPriceAmount>228.73</TotalPriceAmount>
    <PriceCalendarDate>
        <Date>2018-10-22</Date>
    </PriceCalendarDate>
    <PriceCalendarDate>
        <Date>2018-10-31</Date>
    </PriceCalendarDate>
</PriceCalendar>
<PriceCalendar>
    <TotalPriceAmount>228.73</TotalPriceAmount>
    <PriceCalendarDate>
        <Date>2018-10-22</Date>
    </PriceCalendarDate>

```

```

        </PriceCalendarDate>
        <PriceCalendarDate>
            <Date>2018-11-01</Date>
        </PriceCalendarDate>
    </PriceCalendar>
    <PriceCalendar>
        <TotalPriceAmount>228.73</TotalPriceAmount>
        <PriceCalendarDate>
            <Date>2018-10-22</Date>
        </PriceCalendarDate>
        <PriceCalendarDate>
            <Date>2018-11-02</Date>
        </PriceCalendarDate>
    </PriceCalendar>
    <PriceCalendar>
        <TotalPriceAmount>228.73</TotalPriceAmount>
        <PriceCalendarDate>
            <Date>2018-10-22</Date>
        </PriceCalendarDate>
        <PriceCalendarDate>
            <Date>2018-11-03</Date>
        </PriceCalendarDate>
    </PriceCalendar>
    <PriceCalendar>
        <TotalPriceAmount>228.73</TotalPriceAmount>
        <PriceCalendarDate>
            <Date>2018-10-22</Date>
        </PriceCalendarDate>
        <PriceCalendarDate>
            <Date>2018-11-04</Date>
        </PriceCalendarDate>
    </PriceCalendar>
    <PriceCalendar>
        <TotalPriceAmount>228.73</TotalPriceAmount>
        <PriceCalendarDate>
            <Date>2018-10-22</Date>
        </PriceCalendarDate>
        <PriceCalendarDate>
            <Date>2018-11-05</Date>
        </PriceCalendarDate>
    </PriceCalendar>
    <PriceCalendar>
        <TotalPriceAmount>228.73</TotalPriceAmount>
        <PriceCalendarDate>
            <Date>2018-10-23</Date>
        </PriceCalendarDate>
        <PriceCalendarDate>
            <Date>2018-10-30</Date>
        </PriceCalendarDate>
    </PriceCalendar>
    <PriceCalendar>
        <TotalPriceAmount>228.73</TotalPriceAmount>
        <PriceCalendarDate>
            <Date>2018-10-23</Date>
        </PriceCalendarDate>
        <PriceCalendarDate>
            <Date>2018-10-31</Date>
        </PriceCalendarDate>
    </PriceCalendar>
    <PriceCalendar>
        <TotalPriceAmount>228.73</TotalPriceAmount>
        <PriceCalendarDate>
            <Date>2018-10-23</Date>
        </PriceCalendarDate>
        <PriceCalendarDate>
            <Date>2018-11-01</Date>
        </PriceCalendarDate>
    </PriceCalendar>

```

```

    </PriceCalendarDate>
  </PriceCalendar>
<PriceCalendar>
  <TotalPriceAmount>228.73</TotalPriceAmount>
  <PriceCalendarDate>
    <Date>2018-10-23</Date>
  </PriceCalendarDate>
  <PriceCalendarDate>
    <Date>2018-11-02</Date>
  </PriceCalendarDate>
</PriceCalendar>
<PriceCalendar>
  <TotalPriceAmount>228.73</TotalPriceAmount>
  <PriceCalendarDate>
    <Date>2018-10-23</Date>
  </PriceCalendarDate>
  <PriceCalendarDate>
    <Date>2018-11-03</Date>
  </PriceCalendarDate>
</PriceCalendar>
<PriceCalendar>
  <TotalPriceAmount>228.73</TotalPriceAmount>
  <PriceCalendarDate>
    <Date>2018-10-23</Date>
  </PriceCalendarDate>
  <PriceCalendarDate>
    <Date>2018-11-04</Date>
  </PriceCalendarDate>
</PriceCalendar>
<PriceCalendar>
  <TotalPriceAmount>228.73</TotalPriceAmount>
  <PriceCalendarDate>
    <Date>2018-10-23</Date>
  </PriceCalendarDate>
  <PriceCalendarDate>
    <Date>2018-11-05</Date>
  </PriceCalendarDate>
</PriceCalendar>
<PriceCalendar>
  <TotalPriceAmount>228.73</TotalPriceAmount>
  <PriceCalendarDate>
    <Date>2018-10-24</Date>
  </PriceCalendarDate>
  <PriceCalendarDate>
    <Date>2018-10-30</Date>
  </PriceCalendarDate>
</PriceCalendar>
<PriceCalendar>
  <TotalPriceAmount>228.73</TotalPriceAmount>
  <PriceCalendarDate>
    <Date>2018-10-24</Date>
  </PriceCalendarDate>
  <PriceCalendarDate>
    <Date>2018-10-31</Date>
  </PriceCalendarDate>
</PriceCalendar>
<PriceCalendar>
  <TotalPriceAmount>228.73</TotalPriceAmount>
  <PriceCalendarDate>
    <Date>2018-10-24</Date>
  </PriceCalendarDate>
  <PriceCalendarDate>
    <Date>2018-11-01</Date>
  </PriceCalendarDate>
</PriceCalendar>
<PriceCalendar>

```

```

        <TotalPriceAmount>228.73</TotalPriceAmount>
        <PriceCalendarDate>
            <Date>2018-10-24</Date>
        </PriceCalendarDate>
        <PriceCalendarDate>
            <Date>2018-11-02</Date>
        </PriceCalendarDate>
    </PriceCalendar>
    <PriceCalendar>
        <TotalPriceAmount>228.73</TotalPriceAmount>
        <PriceCalendarDate>
            <Date>2018-10-24</Date>
        </PriceCalendarDate>
        <PriceCalendarDate>
            <Date>2018-11-03</Date>
        </PriceCalendarDate>
    </PriceCalendar>
    <PriceCalendar>
        <TotalPriceAmount>228.73</TotalPriceAmount>
        <PriceCalendarDate>
            <Date>2018-10-24</Date>
        </PriceCalendarDate>
        <PriceCalendarDate>
            <Date>2018-11-04</Date>
        </PriceCalendarDate>
    </PriceCalendar>
    <PriceCalendar>
        <TotalPriceAmount>228.73</TotalPriceAmount>
        <PriceCalendarDate>
            <Date>2018-10-24</Date>
        </PriceCalendarDate>
        <PriceCalendarDate>
            <Date>2018-11-05</Date>
        </PriceCalendarDate>
    </PriceCalendar>
    <PriceCalendar>
        <TotalPriceAmount>228.73</TotalPriceAmount>
        <PriceCalendarDate>
            <Date>2018-10-25</Date>
        </PriceCalendarDate>
        <PriceCalendarDate>
            <Date>2018-10-30</Date>
        </PriceCalendarDate>
    </PriceCalendar>
    <PriceCalendar>
        <TotalPriceAmount>228.73</TotalPriceAmount>
        <PriceCalendarDate>
            <Date>2018-10-25</Date>
        </PriceCalendarDate>
        <PriceCalendarDate>
            <Date>2018-10-31</Date>
        </PriceCalendarDate>
    </PriceCalendar>
    <PriceCalendar>
        <TotalPriceAmount>228.73</TotalPriceAmount>
        <PriceCalendarDate>
            <Date>2018-10-25</Date>
        </PriceCalendarDate>
        <PriceCalendarDate>
            <Date>2018-11-01</Date>
        </PriceCalendarDate>
    </PriceCalendar>
    <PriceCalendar>
        <TotalPriceAmount>228.73</TotalPriceAmount>
        <PriceCalendarDate>
            <Date>2018-10-25</Date>
    
```



```

        </PriceCalendarDate>
        <PriceCalendarDate>
            <Date>2018-11-02</Date>
        </PriceCalendarDate>
    </PriceCalendar>
    <PriceCalendar>
        <TotalPriceAmount>228.73</TotalPriceAmount>
        <PriceCalendarDate>
            <Date>2018-10-25</Date>
        </PriceCalendarDate>
        <PriceCalendarDate>
            <Date>2018-11-03</Date>
        </PriceCalendarDate>
    </PriceCalendar>
    <PriceCalendar>
        <TotalPriceAmount>228.73</TotalPriceAmount>
        <PriceCalendarDate>
            <Date>2018-10-25</Date>
        </PriceCalendarDate>
        <PriceCalendarDate>
            <Date>2018-11-04</Date>
        </PriceCalendarDate>
    </PriceCalendar>
    <PriceCalendar>
        <TotalPriceAmount>228.73</TotalPriceAmount>
        <PriceCalendarDate>
            <Date>2018-10-25</Date>
        </PriceCalendarDate>
        <PriceCalendarDate>
            <Date>2018-11-05</Date>
        </PriceCalendarDate>
    </PriceCalendar>
    <PriceCalendar>
        <TotalPriceAmount>228.73</TotalPriceAmount>
        <PriceCalendarDate>
            <Date>2018-10-26</Date>
        </PriceCalendarDate>
        <PriceCalendarDate>
            <Date>2018-10-30</Date>
        </PriceCalendarDate>
    </PriceCalendar>
    <PriceCalendar>
        <TotalPriceAmount>228.73</TotalPriceAmount>
        <PriceCalendarDate>
            <Date>2018-10-26</Date>
        </PriceCalendarDate>
        <PriceCalendarDate>
            <Date>2018-10-31</Date>
        </PriceCalendarDate>
    </PriceCalendar>
    <PriceCalendar>
        <TotalPriceAmount>228.73</TotalPriceAmount>
        <PriceCalendarDate>
            <Date>2018-10-26</Date>
        </PriceCalendarDate>
        <PriceCalendarDate>
            <Date>2018-11-01</Date>
        </PriceCalendarDate>
    </PriceCalendar>
    <PriceCalendar>
        <TotalPriceAmount>228.73</TotalPriceAmount>
        <PriceCalendarDate>
            <Date>2018-10-26</Date>
        </PriceCalendarDate>
        <PriceCalendarDate>
            <Date>2018-11-02</Date>
        </PriceCalendarDate>
    </PriceCalendar>

```

```
</PriceCalendarDate>
</PriceCalendar>
<PriceCalendar>
  <TotalPriceAmount>228.73</TotalPriceAmount>
  <PriceCalendarDate>
    <Date>2018-10-26</Date>
  </PriceCalendarDate>
  <PriceCalendarDate>
    <Date>2018-11-03</Date>
  </PriceCalendarDate>
</PriceCalendar>
<PriceCalendar>
  <TotalPriceAmount>228.73</TotalPriceAmount>
  <PriceCalendarDate>
    <Date>2018-10-26</Date>
  </PriceCalendarDate>
  <PriceCalendarDate>
    <Date>2018-11-04</Date>
  </PriceCalendarDate>
</PriceCalendar>
<PriceCalendar>
  <TotalPriceAmount>228.73</TotalPriceAmount>
  <PriceCalendarDate>
    <Date>2018-10-26</Date>
  </PriceCalendarDate>
  <PriceCalendarDate>
    <Date>2018-11-05</Date>
  </PriceCalendarDate>
</PriceCalendar>
<PriceCalendar>
  <TotalPriceAmount>228.73</TotalPriceAmount>
  <PriceCalendarDate>
    <Date>2018-10-27</Date>
  </PriceCalendarDate>
  <PriceCalendarDate>
    <Date>2018-10-30</Date>
  </PriceCalendarDate>
</PriceCalendar>
<PriceCalendar>
  <TotalPriceAmount>228.73</TotalPriceAmount>
  <PriceCalendarDate>
    <Date>2018-10-27</Date>
  </PriceCalendarDate>
  <PriceCalendarDate>
    <Date>2018-10-31</Date>
  </PriceCalendarDate>
</PriceCalendar>
<PriceCalendar>
  <TotalPriceAmount>228.73</TotalPriceAmount>
  <PriceCalendarDate>
    <Date>2018-10-27</Date>
  </PriceCalendarDate>
  <PriceCalendarDate>
    <Date>2018-11-01</Date>
  </PriceCalendarDate>
</PriceCalendar>
<PriceCalendar>
  <TotalPriceAmount>228.73</TotalPriceAmount>
  <PriceCalendarDate>
    <Date>2018-10-27</Date>
  </PriceCalendarDate>
  <PriceCalendarDate>
    <Date>2018-11-02</Date>
  </PriceCalendarDate>
</PriceCalendar>
<PriceCalendar>
```

```

        <TotalPriceAmount>228.73</TotalPriceAmount>
        <PriceCalendarDate>
            <Date>2018-10-27</Date>
        </PriceCalendarDate>
        <PriceCalendarDate>
            <Date>2018-11-03</Date>
        </PriceCalendarDate>
    </PriceCalendar>
    <PriceCalendar>
        <TotalPriceAmount>228.73</TotalPriceAmount>
        <PriceCalendarDate>
            <Date>2018-10-27</Date>
        </PriceCalendarDate>
        <PriceCalendarDate>
            <Date>2018-11-04</Date>
        </PriceCalendarDate>
    </PriceCalendar>
    <PriceCalendar>
        <TotalPriceAmount>228.73</TotalPriceAmount>
        <PriceCalendarDate>
            <Date>2018-10-27</Date>
        </PriceCalendarDate>
        <PriceCalendarDate>
            <Date>2018-11-05</Date>
        </PriceCalendarDate>
    </PriceCalendar>
</CarrierOffers>
</OffersGroup>

    <Other>
        <OtherMetadata>
            <CurrencyMetadatas>
                <CurrencyMetadata MetadataKey="CUREUR">
                    <Name>EUR</Name>
                </CurrencyMetadata>
            </CurrencyMetadatas>
        </OtherMetadata>
    </Other>

```

```
</Response>
```

```
</AirShoppingRS>
```