

NDC OfferPrice 18.1

Web Services Implementation Guide

Amadeus Altea New Distribution Capability

Index

1	Overview	4
1.1	Short Description	4
1.2	Current Scope	4
1.3	Out of Scope.....	4
1.4	Sequence Diagram	4
1.5	Prerequisites.....	5
2	Building a Query.....	5
2.1	Functional Description	5
2.2	Implementation	6
2.2.1	Version	6
2.2.2	Party	6
2.2.3	Paxs	7
2.2.4	Offers	10
2.2.5	PaymentCardQualifiers.....	12
2.2.6	Excess Baggage.....	13
2.2.7	Parameters.....	14
3	Receiving A Reply	15
3.1	Functional Description	15
3.2	Implementation	17
3.2.1	Version	17
3.2.2	Error	17
3.2.3	ShoppingResponse	18
3.2.4	Warnings	19
3.2.5	PricedOffer	19
3.2.6	PaxList.....	35
3.2.7	PaxSegmentList	35
3.2.8	OriginDestList.....	37
3.2.9	PaxJourneyList	39
3.2.10	BagAllowanceList.....	40
3.2.11	ServiceDefinitionList.....	43
3.2.12	PriceClassList	45
3.2.13	DescriptionMetadatas	47
4	Troubleshooting	48
4.1	Errors.....	48
4.2	Warnings	49
5	Detailed Use Cases.....	49
5.1	OfferPrice for one adult passenger requesting a one-way flight	49
5.1.1	Use Case Description	49
5.1.2	Preconditions.....	49
5.1.3	Query	49
5.1.4	Reply	50
5.2	OfferPrice for one adult passenger requesting a one-way flight with no free baggage allowance information	52
5.2.1	Use Case Description	52
5.2.2	Preconditions.....	52
5.2.3	Query	52
5.2.4	Reply	52
5.3	OfferPrice for two adult passengers requesting a one-way flight.....	54
5.3.1	Use Case Description	54
5.3.2	Preconditions.....	54

5.3.3	Query	54
5.3.4	Reply	55
5.4	OfferPrice for one adult passenger requesting a round trip	57
5.4.1	Use Case Description	57
5.4.2	Preconditions	57
5.4.3	Query	58
5.4.4	Reply	58
5.5	OfferPrice for one adult and one child passenger requesting a one-way flight .	60
5.5.1	Use Case Description	60
5.5.2	Preconditions	61
5.5.3	Query	61
5.5.4	Reply	61
5.6	OfferPrice for one adult requesting a one-way flight, one service is included in the flight fare	64
5.6.1	Use Case Description	64
5.6.2	Preconditions	64
5.6.3	Query	64
5.6.4	Reply	65
5.7	OfferPrice for one adult requesting a one-way flight, one service is available at a charge	67
5.7.1	Use Case Description	67
5.7.2	Preconditions	67
5.7.3	Query	67
5.7.4	Reply	68
5.8	OfferPrice for one adult and one infant passenger requesting a one-way flight	71
5.8.1	Use Case Description	71
5.8.2	Preconditions	71
5.8.3	Query	71
5.8.4	Reply	72
5.9	OfferPrice for one adult with a Frequent Traveler account requesting a one-way flight	74
5.9.1	Use Case Description	74
5.9.2	Preconditions	74
5.9.3	Query	74
5.9.4	Reply	75
6	Glossary	77
7	Legal disclaimer	78

1 Overview

1.1 Short Description

The *OfferPrice* request allows the user the selection of one of the offers returned in *AirShopping* and to refine the offer price, by selecting one or more offer items.

1.2 Current Scope

Are considered in the scope of the current release:

- Mono and multi passenger itineraries.
- One-Way and Round-Trip Flights.
- Prime Flights.
- Airline marketed flights.
- OB fees.
- Ancillary Services.

The description of the fare condition are returned in OfferPriceRS in a localized free text format. The data covers only flight content and is returned based on Airline inputs.

Here is a non exhaustive list of conditions that can be returned:

- Carry-on and checked baggages
- Cancellation rules
- Lounge access
- Change rules
- Priority check-in & boarding
- Seat selection

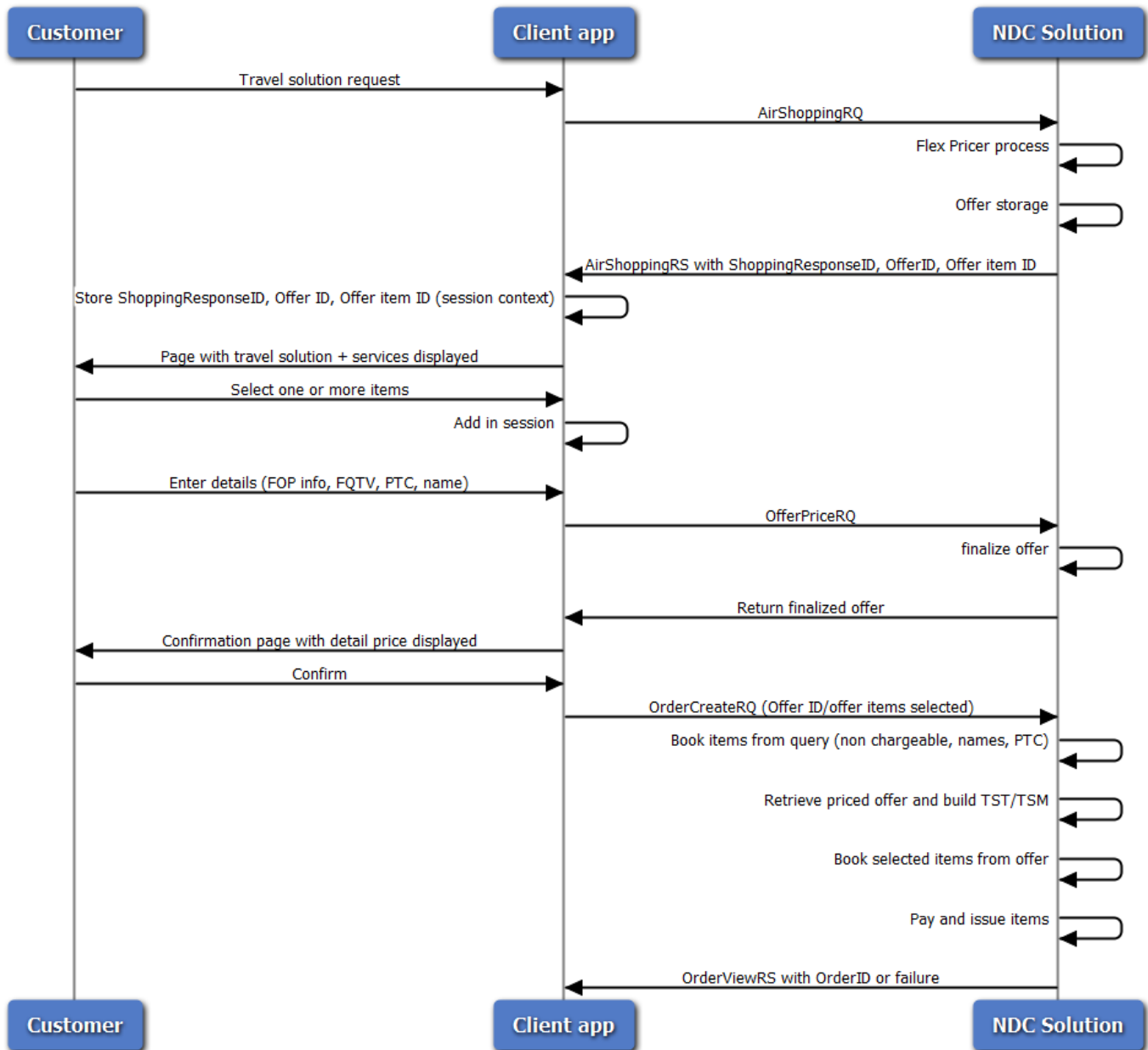
1.3 Out of Scope

Here are the limitations related to the current release:

- The pricing flow is limited to only one offer per transaction. Multiple offer items are supported but only one mandatory offer item.
- Only one FOP is accepted per transaction
- The display of "pack of services" feature is not supported
- Group PNRs are not supported
- No interline
- FQTV information input in OfferPrice will not generate a reevaluation of the pricing conditions (fare basis / fare family) of the offer (created at shopping time)

1.4 Sequence Diagram

Diagram showing the *OfferPrice* request in the global NDC flow:



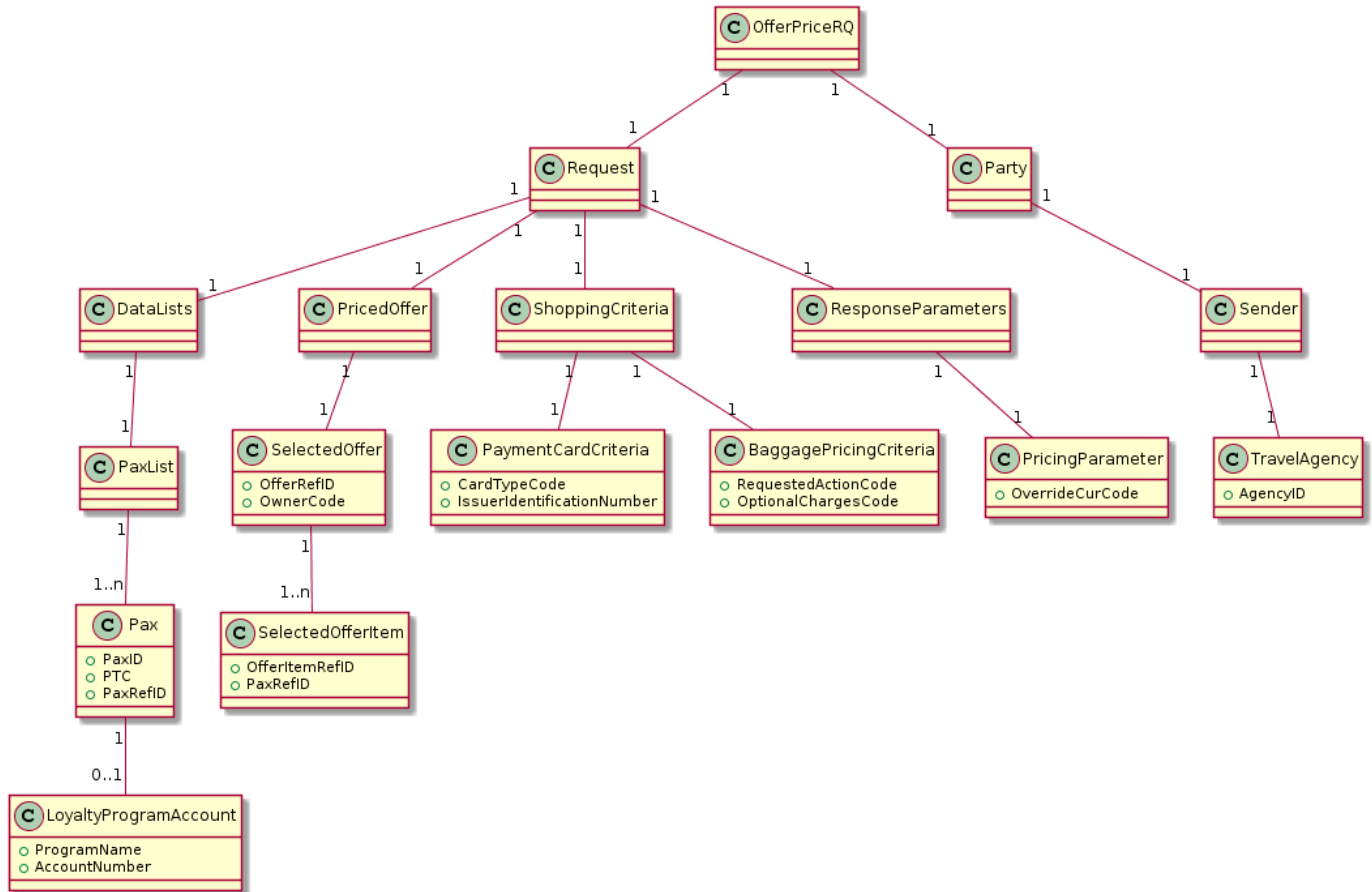
1.5 Prerequisites

The *AirShopping* transaction has been successfully run and at least one valid offer with at least one mandatory offer item is stored.

2 Building a Query

2.1 Functional Description

Class diagram describing the *OfferPriceRQ* xml:



2.2 Implementation

This section describes the implementation of the input message based on the **NDC schema version 18.1**.

2.2.1 Version

Version	Designation	Repetition	Status	Location	Comments
Message version	1	M		OfferPriceRQ/PayloadAttributes/Version	Set to the NDC schema version to which the message complies to.

```
<PayloadAttributes>
  <Version>3.000</Version>
</PayloadAttributes>
```

2.2.2 Party

NDC Message/ Transaction Party(s) information. This element contains the Amadeus office in which the query is processed.

Party	Designatio	Repetitio	Statu	Location	Comment
n	n	n	s	s	s

Party	1	M	OfferPriceRQ/Party
AgencyID	1	M	OfferPriceRQ/Party/Sender/TravelAgency/AgencyID

Note: Any other information entered in the party element will be ignored.

```

<Party>
  <Sender>
    <TravelAgency>
      <AgencyID>OfficeID</AgencyID>
    </TravelAgency>
  </Sender>
</Party>

```

2.2.3 Paxs

Passengers are listed in the *Paxs* element. For each passenger one *Pax* element must be used. There is no more differentiation between an *Anonymous Traveler* and a *Recognized Traveler* as in version FlightPrice 16.1.

PaxDesignation	Repetition	Status	Location	Comments
PaxID	1	M	OfferPriceRQ/Request/DataLists/PaxList/Pax/PaxID	Unique passenger ID. Ex: PAX1, PAX2, ..
PTC	1	O	OfferPriceRQ/Request/DataLists/PaxList/Pax/PTC	Describes the type of the passenger. Possible values are: ADT, CHD, INF. If present in the query, it must match, for each passenger ID, the PTC previously returned in <i>AirShoppingRS</i> .

				The value of the Quantity attribute is ignored.
PassengerAssociation	1	O	OfferPriceRQ/Request/DataLists/PaxList/Pax/PaxRefID	Associates an infant in lap to an adult passenger. This information is not used at this stage of the NDC flow.
Individual	1	O	OfferPriceRQ/Request/DataLists/PaxList/Pax/Individual	A single human being as distinct from a group, class, or family.
Surname	1	M	OfferPriceRQ/Request/DataLists/PaxList/Pax/Individual/Surname	Passenger's family name. The information is not used to price the offer.
LoyaltyProgramAccount	1	O	OfferPriceRQ/Request/DataLists/PaxList/Pax/LoyaltyProgramAccount	An account set up for a customer within a rewards program which holds funds on behalf of that customer.

ProgramName	1	M	OfferPriceRQ/Request/DataLists/PaxList/Pax/LoyaltyProgramAccount/ProgramName	The 2-letters code of the Airline sponsoring the FQTV program.
AccountNumber	1	M	OfferPriceRQ/Request/DataLists/PaxList/Pax/LoyaltyProgramAccount/AccountNumber	The number identifying the FQTV account.
Carrier	1	O	OfferPriceRQ/Request/DataLists/PaxList/Pax/LoyaltyProgramAccount/Carrier	Includes the carrier issuing the ticket and all carriers that carry or undertake to carry the passenger and/or his baggage or to perform any other services related to such carriage.
AirlineDesignCode	1	M	OfferPriceRQ/Request/DataLists/PaxList/Pax/LoyaltyProgramAccount/Carrier/AirlineDesignCode	Airline code assigned to a carrier (used for loyalty program).

```

<Request>
  <Paxs>
    <Pax>
      <PaxID>PAX1</PaxID>
      <PTC>ADT</PTC>
      <Individual>
        <Surname>Any value</Surname>
      </Individual>
    </Pax>
  </Paxs>
</Request>

```

```

<LoyaltyProgramAccount>
  <ProgramName>YY</ProgramName>
  <AccountNumber>12345678</AccountNumber>
  <Carrier>
    <AirlineDesigCode>6X</AirlineDesigCode>
  </Carrier>
</LoyaltyProgramAccount>
<Pax/>
</Pax>
</Request>

```

2.2.4 Offers

The core query parameters are the Offer and the Offer item(s), selected among the proposed solutions from previous shopping transactions. Only one offer can be requested per transaction. If more than one Offer is requested, the first of the list is processed and the rest is ignored.

The minimum set of information needed to process an Offer is:

- **the Offer ID:** it must be the value received in output of a previous shopping transaction, within the time limit of the offer validity. If the offer ID is not valid, an error is returned.
- **the Owner of the offer:** this element is mandatory in the XSD but not needed for the process. The value is going to be ignored.
- **at least one Offer Item ID:** it must be the value received in output of a previous shopping transaction.
- **passenger association:** for each offer item the passenger reference can be given, to indicate the purchase choice. If no passenger association is given in input, the offer item is by default associated to all travelers to which the item is associated to in the offer storage. An error is returned by the system if the offer item is not applicable for at least one of the associated passengers.

OfferDesignation	Repetition	Status	Location	Comments
OfferRefID	1	M	OfferPriceRQ/Request/PricedOffer/SelectedOffer/OfferRefID	Reference to the OfferID of the selected Offer (either a standard Offer or an a-la-carte Offer) returned in a previous shopping response.

OwnerCode	1	M	OfferPriceRQ/Request/PricedOffer/SelectedOffer/Owner Code	Designat or of Airline that owns/ assigne d these IDs. Example s: BA
ShoppingRespon seRefID	1	M	OfferPriceRQ/Request/PricedOffer/SelectedOffer/Shoppi ngResponseRefID	Referen ce to unique shoppin g session respons e ID, as provided in the airline's previous shoppin g respons e.
SelectedOfferIte m	1..n	M	OfferPriceRQ/Request/PricedOffer/SelectedOffer/Select edOfferItem	OfferIte m selected by the Passeng er for inclusion in the requeste d Order.
OfferItemRefID	1	M	OfferPriceRQ/Request/PricedOffer/SelectedOffer/Select edOfferItem/OfferItemRefID	Referen ce to the OfferIte mID of the selected OfferIte m (contain ed in either a standard Offer or an a-la- carte Offer)

				returned in a previous shopping response.
PaxRefID	1..n	M	OfferPriceRQ/Request/PricedOffer/SelectedOffer/SelectedOfferItem/PaxRefID	Reference to passenger(s) for which this OfferItem and selected Services (in case of Service Bundles) applies.

```

<SelectedOffer>
  <OfferRefID>0abcd</OfferRefID>
  <OwnerCode>6X</OwnerCode>
  <ShoppingResponseRefID>1</ShoppingResponseRefID>
  <SelectedOfferItem>
    <OfferItemID>0item</OfferItemID>
    <PaxRefID>PAX1</PaxRefID>
  </SelectedOfferItem>
  <SelectedOfferItem>
    <OfferItemID>1item</OfferItemID>
    <PaxRefID>PAX2</PaxRefID>
  </SelectedOfferItem>
</SelectedOffer>

```

2.2.5 PaymentCardQualifiers

If the form of payment chosen by the purchaser is a credit card, some details about the payment card must be given in the *OfferPrice* input with the aim of computing the associated fees, if applicable. Only one form of payment can be described in the query. This credit card is applied by default to all the passengers and it pays for the entire purchase amount.

Required information:

- **Card Type:** the two-letters payment card type.
- **Issuer Identification Number :** Payment card IIN/ BIN number. This is the first 6 digits of a credit card number known as the Issuer Identification Number (IIN), previously known as bank identification number (BIN), that identifies the institution that issued the card to the card holder.

PaymentCardQualifier sDesignation	Repetition	Status	Location	Comments
--------------------------------------	------------	--------	----------	----------

CardTypeCode	1	M	OfferPriceRQ/Request/ShoppingCriteria/PaymentCardCriteria/CardTypeCode	Credit card type. Example: MC, VI
IssuerIdentificationNumber	1	M	OfferPriceRQ/Request/ShoppingCriteria/PaymentCardCriteria/IssuerIdentificationNumber	First 6 digits of the credit card number. Example: 401123

```

<ShoppingCriteria>
  <Shopping>
    <PaymentCardCriteria>
      <CardTypeCode >MC</CardTypeCode>
      <IssuerIdentificationNumber>515830</IssuerIdentificationNumber>
    </PaymentCardCriteria>
  </Shopping>
</ShoppingCriteria>

```

2.2.6 Excess Baggage

Some airlines follow a weight policy for their bags. As a consequence, in order to sell additional chargeable bags, they file services with a price/weight unit. In order to book such service, the passenger needs to specify how many weight units (kilograms) they want to purchase.

Required information:

- Requested Action Code : the two-letters unit measure.
- Optional Charges Code : The excess baggage weight.

BaggagePricingCriteriaDesignation	Repetition	Status	Location	Comments
RequestedActionCode	1	O	OfferPriceRQ/Request/ShoppingCriteria/BaggagePricingCriteria/RequestedActionCode	Excess baggage unit measure
OptionalChargesCode	1	O	OfferPriceRQ/Request/ShoppingCriteria/BaggagePricingCriteria/OptionalChargesCode	Excess baggage weight

```

<OfferPriceRQ>
  <Party>
    <Sender>
      <TravelAgency>
        <AgencyID>NCE6X09DC</AgencyID>
      </TravelAgency>
    </Sender>
  </Party>
  <Request>
    <PricedOffer>
      <SelectedOffer>
        <OfferRefID>SULL-4365423663143260893-1</OfferRefID>
        <OwnerCode>6X</OwnerCode>
        <ShoppingResponseRefID>SULL-
4365423663143260893</ShoppingResponseRefID>
        <SelectedOfferItem>
          <OfferItemRefID>SULL-4365423663143260893-1-4</OfferItemRefID>
          <PaxRefID>PAX1</PaxRefID>
        </SelectedOfferItem>
      </SelectedOffer>
    </PricedOffer>
    <ShoppingCriteria>
      <BaggagePricingCriteria>
        <RequestedActionCode>KG</RequestedActionCode>
        <OptionalChargesCode>15</OptionalChargesCode>
      </BaggagePricingCriteria>
    </ShoppingCriteria>
  </Request>
</OfferPriceRQ>

```

2.2.7 Parameters

Options available for the pricing of services.

Required information:

- OverrideCurrency: the three alpha currency code of sale.

Parameters Designation	Repetition	Status	Location	Comments
OverrideCurrency	1	O	OfferPriceRQ/Request/ResponseParameters/PricingParameter/OverrideCurCode	Currency code of sale

```

<ResponseParameters>
  <PricingParameter>
    <OverrideCurCode>USD</OverrideCurCode>
  </PricingParameter>
</ResponseParameters>

```

- LanguageCode: the two letters ISO language code. Options available for the language of the fare conditions. By default, language is English.

Parameters Designation	Repetition	Status	Location	Comments
------------------------	------------	--------	----------	----------

LangCode	1	O	OfferPriceRQ/Request/ResponseParameters/Lang Usage/LangCode
----------	---	---	---

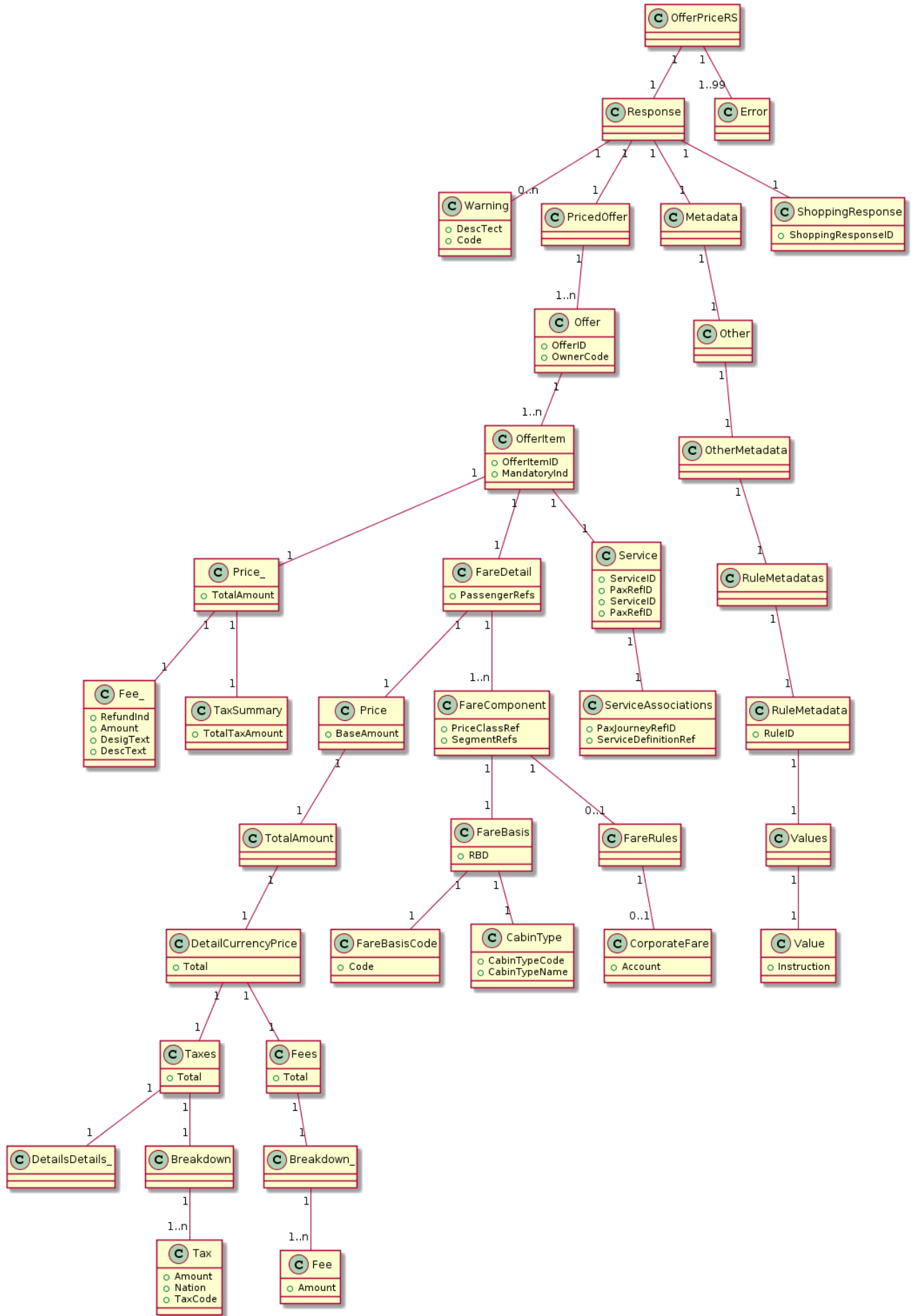
Language Code representat ion. Example: EN

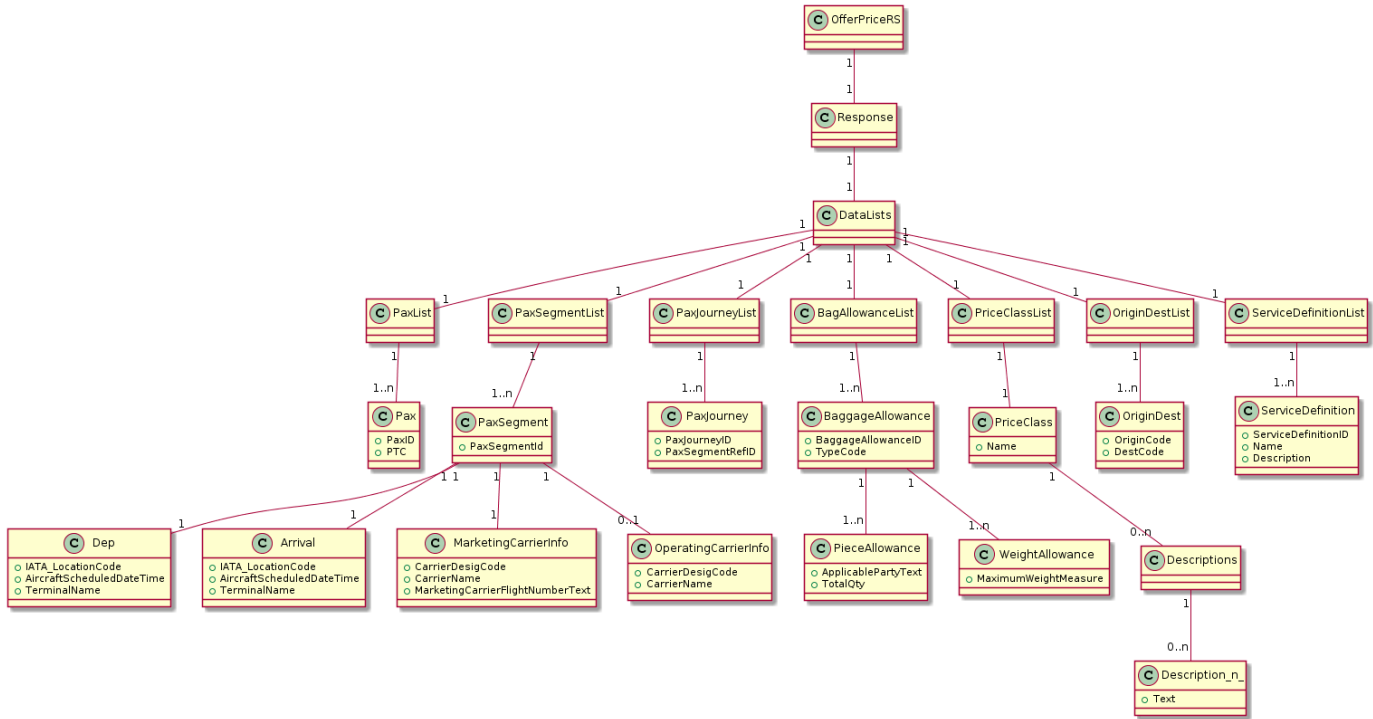
```
<Request>  
  <ResponseParameters>  
    <LangUsage>  
      <LangCode >EN</LangCode>  
    </LangUsage>  
  </ResponseParameters>  
</Request>
```

3 Receiving A Reply

3.1 Functional Description

Class diagrams describing the *OfferPriceRS* xml:





3.2 Implementation

In this section we describe the OfferPriceRS in case of successful process.

3.2.1 Version

Version

Designation	Repetition	Status	Location	Comments
Message version	1	M	OfferPriceRS/PayloadAttributes/Version	Set to the NDC schema version to which the message complies to

```

<OfferPriceRS>
  <PayloadAttributes>
    <Version>3.000</Version>
  </PayloadAttributes>
</OfferPriceRS>

```

3.2.2 Error

NDC Message Errors (up to 99).

ErrorDesignation	Repetition	Status	Location	Comments
Code	1	O	OfferPriceRS/Error/Code	The code corresponding to the processing error as defined by PADIS 9321.

Description text	1	O	OfferPriceRS/Error/DescText	Free text description of the provided error.
LanguageCode	1	O	OfferPriceRS/Error/LanguageCode	Language code associated with the error response.
TagText	1	O	OfferPriceRS/Error/TagText	Identifies the tag/XPath which relates to the provided Error.
TypeCode	1	O	OfferPriceRS/Error/TypeCode	Uses a bilaterally agreed set of values to indicate the error type.

```

<Error>
<Code>143</Code>
<DescText>INVALID OR INELIGIBLE PASSENGER TYPE CODE</DescText>
<LanguageCode>EN</LanguageCode>
<TagText>[PAX11]</TagText>
<TypeCode>W</TypeCode>
</Error>

```

3.2.3 ShoppingResponse

Associated response ID from a prior shopping response.

ShoppingResponseDe signation	Repetit ion	Stat us	Location	Comme nts
ShoppingResponse	1	O	OfferPriceRS/Response/ShoppingResponse	Associa ted respon se ID from a prior shoppin g respon se.
ResponseID	1	M	OfferPriceRS/Response/ShoppingResponse/Sh oppingResponseID	Unique shoppin g session respon se ID.

```

<ShoppingResponse>
  <ShoppingResponseID>1</ShoppingResponseID>
</ShoppingResponse>

```

3.2.4 Warnings

Used to convey warning messages in success cases.

WarningsDesignation	Repetition	Status	Location	Comments
Code	1	O	OfferPriceRS/Response/Warning/Code	Numeric code
Description text	1	O	OfferPriceRS/Response/Warning/DescText	Free text description of the provided warning.
LanguageCode	1	O	OfferPriceRS/Response/Warning/LanguageCode	Language code associated with the warning response.
TagText	1	O	OfferPriceRS/Response/Warning/TagText	Identifies the tag/XPath which relates to the provided Warning.
TypeCode	1	O	OfferPriceRS/Response/Warning/TypeCode	Uses a bilaterally agreed set of values to indicate the warning type.

```
<Response>
  <Warning>41
    <DescText>FREQUENT FLYER NUMBER IS INVALID</DescText>
    <LanguageCode>EN</LanguageCode>
    <TagText>[PAX11]</TagText>
    <TypeCode>W</TypeCode>
  </Response>
```

3.2.5 PricedOffer

This element contains the price of the flights that are contained in the requested offer and the references to the associated passengers, flights and, if applicable, services. Only one repetition of *PricedOffer* is supported in current *OfferPrice* implementation.

- OfferID: the element contains the ID of the priced offer and the code of the *Owner* as an attribute. Warning: the process could return a different offer ID than the one given in input. Please refer to the specifications for further clarification.
- OfferItem: it is repeated for each priced offer item. It contains the ID of the offer item in the *OfferItemID* attribute at the element root and it includes price information in the sub-elements. Warning: the process could return a different offer item ID than the one given in input. Please refer to the specifications for further clarification.
- RequestedDateInd: container of price and associations details.
- Total: total offer item price is returned here (including fees if applicable).
- Detail: for each passenger, offer item price information details are repeated to list the following information:
 - Total Amount: identified by the tag TOTAL AMOUNT PAXn in Application element
 - Base Amount: identified by the tag BASE AMOUNT PAXn in Application element
 - Total Tax Amount: identified by the tag TAXES AMOUNT PAXn in Application element

```

<PricedOffer>
    <Offer>
        <OfferID>123456</OfferID>
        <OwnerCode>6X</OwnerCode>
        <OfferItem>
            <OfferItemID>123123456-1</OfferItemID>
            <FareDetail>
                <Price>
                    <BaseAmount>0</BaseAmount>
                    <Taxes>
                        <Total>101.01</Total>
                        <Breakdown>
                            <Tax>

<Amount>96.00</Amount>

<Nation>YR</Nation>

<TaxCode>VB</TaxCode>

                                                                </Tax>
                                                                <Tax>

<Amount>5.01</Amount>

<Nation>DQ</Nation>

<TaxCode>AP</TaxCode>

                                                                </Tax>

                                                                </Breakdown>
                                                                </Taxes>
                </Price>
            <FareComponent>
                <FareBasis>
                    <FareBasisCode>
                        <Code>YPR0FI</Code>
                    </FareBasisCode>
                </FareBasisCode>
            </FareComponent>
        </OfferItem>
    </Offer>
</PricedOffer>

```

```

<RBD>M</RBD>
<CabinType>

<CabinTypeCode>text</CabinTypeCode>

<CabinTypeName>text</CabinTypeName>

</CabinType>
</FareBasis>
</FareComponent>
</FareDetail>
<Service>
  <ServiceID>SRV1</ServiceID>
  <PaxRefID>PAX1</PaxRefID>
  <ServiceAssociations>
    <ServiceDefinitionRef>
<ServiceDefinitionRefID>SRV1</ServiceDefinitionRefID>
<PaxSegmentRefID>SEG1</PaxSegmentRefID>
    </ServiceDefinitionRef>
  </ServiceAssociations>
</Service>
  <Price>
    <TotalAmount>100.74</TotalAmount>
    <Discount>
      <PreDiscountedAmount>130.74</PreDiscountedAmount>
      <DescText>HOLIDAY</DescText>
      <DiscountContext>
        <KeywordText>523355488</KeywordText>
        <ValueText>DIS1234</ValueText>
      </DiscountContext>
    </Discount>
  </Price>
</OfferItem>
</Offer>
</PricedOffer>

```

- **Taxes**: container for taxes details
 - **Total**: Total of Taxes Amount over all passengers is returned here
 - **Tax**: for each passenger, tax information details are repeated

```

<Taxes>
<Total>156.51</Total>
<Breakdown>
<Tax refs="PAX1">
<Amount>96.00</Amount>
<Nation>YR</Nation>
<TaxCode>VB</TaxCode>
</Tax>
<Tax refs="PAX1">
<Amount>5.01</Amount>
<Nation>DQ</Nation>
<TaxCode>AP</TaxCode>
</Tax>
<Tax refs="PAX1">
<Amount>8.61</Amount>
<Nation>FI</Nation>
<TaxCode>DP</TaxCode>

```

```

</Tax>
<Tax refs="PAX1">
<Amount>1.20</Amount>
<Nation>XU</Nation>
<TaxCode>AV</TaxCode>
</Tax>
<Tax refs="PAX1">
<Amount>15.07</Amount>
<Nation>UB</Nation>
<TaxCode>AS</TaxCode>
</Tax>
<Tax refs="PAX1">
<Amount>4.89</Amount>
<Nation>YC</Nation>
<TaxCode>AE</TaxCode>
</Tax>
<Tax refs="PAX1">
<Amount>15.99</Amount>
<Nation>US</Nation>
<TaxCode>AS</TaxCode>
</Tax>
<Tax refs="PAX1"><Amount>3.52</Amount>
<Nation>XA</Nation>
<TaxCode>CO</TaxCode>
</Tax>
<Tax refs="PAX1">
<Amount>6.22</Amount>
<Nation>XY</Nation>
<TaxCode>CR</TaxCode>
</Tax>
</Breakdown>
</Taxes>

```

- **Fees** (if applicable): container for fees details
 - **Total**: Total of fees Amount over all passengers is returned here
 - **Fee**: for each passenger, fee information details are repeated

CC fees will be present if fees are supported and a credit card identifier is present in the request.

```

<Fees>
<Total>0.99</Total>
<Breakdown>
  <Fee refs="PAX1" RefundInd="false">
    <Amount>0.74</Amount>
    <Designator>OB</Designator>
    <Description>CC fee</Description>
    <Nature>FCA</Nature>
  </Fee>
  <Fee refs="PAX11" RefundInd="false">
    <Amount>0.25</Amount>
    <Designator>OB</Designator>
    <Description>CC fee</Description>
    <Nature>FCA</Nature>
  </Fee>
</Breakdown>
</Fees>

```

- **Associations** (at *RequestedDate* level): it contains the references of all the elements associated to the priced offer item

- AssociatedTraveler: *TravelerReferences* indicates the passengers to whom the offer item price applies
 - ApplicableFlight: *FlightReferences* indicates the flights contained in the offer item. It is not used in case the offer items contain services only.
 - PriceClass: *PriceClassReference* indicates the fare family related to the fare.
 - IncludedServices: *ServiceReferences* indicates the services included in the flights price (services bundled with the flights). It is not used in case the offer items contains services only.
 - AssociatedServices: *ServiceReferences* indicates the optional services whose price is separated from the price of the flights. If this type of association is used, the price reported in Details is the price of the service. Please refer to example 5.7 below for more detailed explanation.
 - OtherAssociation: this element is used to convey a reference to a free baggage allowance description, that is the allowance that will be included in the flight ticket. *Type* element contains the tag CHECKEDBAGALLOWANCE and *ReferenceValue* contains the key identifying one element of *CheckedBagAllowanceList*.
- Fare component: for each segment, fare component information details
 - Fare basis code
 - Corporate account code: (if applicable) code used for pricing special fares.
 - TimeLimits: the element is mandatory for the schema, but not used in current implementation. It is sent empty. However, the process could have an impact on the offer time limit: please refer to the specifications for further clarification.
 - Associations (at *PricedFlightOffer* level): the element is mandatory for the schema, but not used in current implementation. It is sent empty.

OfferDesignation	Repetition	Status	Location	Comments
Offer ID	1	M	OfferPriceRS/Response/PricedOffer/Offer/OfferID	Uniquely Identifies an Offer within the context of one message.
Offer ID Owner	1	M	OfferPriceRS/Response/PricedOffer/Offer/Owner Code	

OfferItemDesignation	Repetition	Status	Location	Comments
Offer Item	1..N	M	OfferPriceRS/Response/PricedOffer/Offer/OfferItem	A priced grouping of one or more services

					within an Offer
Offer Item ID	1	M	OfferPriceRS/Response/PricedOffer/Offer/OfferItem/OfferItemID		Unique identifier for this OfferItem instance. Must be unique within XML message .
MandatoryInd	1	O	OfferPriceRS/Response/PricedOffer/Offer/OfferItem/MandatoryInd		If set to 'true', indicates mandatory Offer Items which cannot be removed from the Offer. Mandatory Offer Items transition into Order Items. If not present or 'false', the Offer item is optional. The aggregate price at the Offer level initially reflects.
Fare Detail per Passenger Designation	Rep etition	St at us	Location		Comm ents

Detail association to pax	1	M	OfferPriceRS/Response/PricedOffer/Offer/OfferItem/FareDetail/PassengerRefs	Passengers associated with the specific Fare Detail instance. Allows the Price breakdown of the fare for the offer item per passenger.
Price	1	M	OfferPriceRS/Response/PricedOffer/Offer/OfferItem/FareDetail/Price	Total price of all FareComponent prices. Price reflects a per-passenger price referenced within this FareDetail.
TotalAmount	1	O	OfferPriceRS/Response/PricedOffer/Offer/OfferItem/FareDetail/Price/TotalAmount	Total price amount .
Details	1	M	OfferPriceRS/Response/PricedOffer/Offer/OfferItem/FareDetail/Price/TotalAmount/DetailCurrencyPrice/Details	
Detail	1..N	M	OfferPriceRS/Response/PricedOffer/Offer/OfferItem/FareDetail/Price/TotalAmount/DetailCurrencyPrice/Taxes/Details/Detail	

Subtotal	1	M	OfferPriceRS/Response/PricedOffer/Offer/OfferItem/FareDetail/Price/TotalAmount/DetailCurrencyPrice/Details/Detail/SubTotal	repetition is unique inside each Detail parent element
Application	1	M	OfferPriceRS/Response/PricedOffer/Offer/OfferItem/FareDetail/Price/TotalAmount/DetailCurrencyPrice/Details/Detail/Application	repetition is unique inside each Detail parent element
Base amount	1	M	OfferPriceRS/Response/PricedOffer/Offer/OfferItem/FareDetail/Price/BaseAmount	Base Amount excluding taxes, fees, and surcharges.
Taxes				
Taxes	1	O	OfferPriceRS/Response/PricedOffer/Offer/OfferItem/FareDetail/Price/TotalAmount/DetailCurrencyPrice/Taxes	
Total	1	O	OfferPriceRS/Response/PricedOffer/Offer/OfferItem/FareDetail/Price/TotalAmount/DetailCurrencyPrice/Taxes/Total	It is equal to the sum of taxes over all passengers
Total code	1	O	OfferPriceRS/Response/PricedOffer/Offer/OfferItem/FareDetail/Price/TotalAmount/DetailCurrencyPrice/Taxes/Total/@Code	Currency code. Example: USD

Breakdown	1	O	OfferPriceRS/Response/PricedOffer/Offer/OfferItem/FareDetail/Price/TotalAmount/DetailCurrencyPrice/Taxes/Breakdown	
Tax	1..N	M	OfferPriceRS/Response/PricedOffer/Offer/OfferItem/FareDetail/Price/TotalAmount/DetailCurrencyPrice/Taxes/Breakdown/Tax	Mandatory if the parent element is present.
Amount	1	M	OfferPriceRS/Response/PricedOffer/Offer/OfferItem/FareDetail/Price/TotalAmount/DetailCurrencyPrice/Taxes/Breakdown/Tax/Amount	repetition is unique inside each Tax parent element
Amount code	1	M	OfferPriceRS/Response/PricedOffer/Offer/OfferItem/FareDetail/Price/TotalAmount/DetailCurrencyPrice/Taxes/Breakdown/Tax/Amount/@Code	Currency code. Example: USD
Nation	1	O	OfferPriceRS/Response/PricedOffer/Offer/OfferItem/FareDetail/Price/TotalAmount/DetailCurrencyPrice/Taxes/Breakdown/Tax/Nation	
Tax Code	1	O	OfferPriceRS/Response/PricedOffer/Offer/OfferItem/FareDetail/Price/TotalAmount/DetailCurrencyPrice/Taxes/Breakdown/Tax/TaxCode	
Fees				
Fees	1	O	OfferPriceRS/Response/PricedOffer/Offer/OfferItem/FareDetail/Price/TotalAmount/DetailCurrencyPrice/Fees	This element will be present if OB fees are supported.
Fees total	1	M	OfferPriceRS/Response/PricedOffer/Offer/OfferItem/FareDetail/Price/TotalAmount/DetailCurrencyPrice/Fees/Total	Mandatory if the

				parent element is present. It is equal to the sum of fees Amount over all passengers
Fees total code	1	M	OfferPriceRS/Response/PricedOffer/Offer/OfferItem/FareDetail/Price/TotalAmount/DetailCurrencyPrice/Fees/Total/@Code	Currency code. Example: USD
Breakdown	1	O	OfferPriceRS/Response/PricedOffer/Offer/OfferItem/FareDetail/Price/TotalAmount/DetailCurrencyPrice/Fees/Breakdown	
Fee	1..N	M	OfferPriceRS/Response/PricedOffer/Offer/OfferItem/FareDetail/Price/TotalAmount/DetailCurrencyPrice/Fees/Breakdown/Fee	Mandatory if the parent element is present.
Passenger reference	1	M	OfferPriceRS/Response/PricedOffer/Offer/OfferItem/FareDetail/Price/TotalAmount/DetailCurrencyPrice/Fees/Breakdown/Fee/@refs	Reference of the passenger the fees apply to.
Refund Indicator	1	M	OfferPriceRS/Response/PricedOffer/Offer/OfferItem/FareDetail/Price/TotalAmount/DetailCurrencyPrice/Fees/Breakdown/Fee/@RefundInd	When TRUE the fee amount is refundable.
Breakdown amount	1	M	OfferPriceRS/Response/PricedOffer/Offer/OfferItem/FareDetail/Price/TotalAmount/DetailCurrencyPrice/Fees/Breakdown/Fee/@Amount	repetition is unique

			ce/TotalAmount/DetailCurrencyPrice/Fees/Breakdown/Fee/Amount	inside each Fee parent element
Breakdown amount code	1	M	OfferPriceRS/Response/PricedOffer/Offer/OfferItem/FareDetail/Price/TotalAmount/DetailCurrencyPrice/Fees/Breakdown/Fee/Amount/@Code	Currency code. Example: USD
Designator	1	O	OfferPriceRS/Response/PricedOffer/Offer/OfferItem/FareDetail/Price/TotalAmount/DetailCurrencyPrice/Fees/Breakdown/Fee/Designator	
Description	1	O	OfferPriceRS/Response/PricedOffer/Offer/OfferItem/FareDetail/Price/TotalAmount/DetailCurrencyPrice/Fees/Breakdown/Fee/Description	
Nature	1	O	OfferPriceRS/Response/PricedOffer/Offer/OfferItem/FareDetail/Price/TotalAmount/DetailCurrencyPrice/Fees/Breakdown/Fee/Nature	
Fare Component Detail Designation	Repetition	Status	Location	Comments
Fare component	1..N	O	OfferPriceRS/Response/PricedOffer/Offer/OfferItem/FareDetail/FareComponent	Fare component information, which includes the fare basis code and the corporate account code if applicable

Fare basis code	1	O	OfferPriceRS/Response/PricedOffer/Offer/OfferItem/FareDetail/FareComponent/FareBasis/FareBasisCode/Code	Fare basis code
RBD	1	O	OfferPriceRS/Response/PricedOffer/Offer/OfferItem/FareDetail/FareComponent/FareBasis/RBD	
CabinTypeCode	1	M	OfferPriceRS/Response/PricedOffer/Offer/OfferItem/FareDetail/FareComponent/FareBasis/CabinType/CabinTypeCode	Cabin type code
CabinTypeName	1	M	OfferPriceRS/Response/PricedOffer/Offer/OfferItem/FareDetail/FareComponent/FareBasis/CabinType/CabinTypeName	Cabin type name
Corporate account code	1	O	OfferPriceRS/Response/PricedOffer/Offer/OfferItem/FareDetail/FareComponent/FareRules/CorporateFare/Account	Used for pricing special fares
PriceClassRef	1	O	OfferPriceRS/Response/PricedOffer/Offer/OfferItem/FareDetail/FareComponent/PriceClassRef	Price class reference
Segment Refs	1	O	OfferPriceRS/Response/PricedOffer/Offer/OfferItem/FareDetail/FareComponent/SegmentRefs	Segment references
ServiceDesignation	Repetition	Status	Location	Comments
ServiceID	1	M	OfferPriceRS/Response/PricedOffer/Offer/OfferItem/Service/ServiceID	
PaxRefID	1..N	M	OfferPriceRS/Response/PricedOffer/Offer/OfferItem/Service/PaxRefID	Reference to a Passenger entitled to receive/consume the Service(s) offered by the Airline, whether

					the Service(s) are flight-related or not.
ServiceDefinitionRef	1	O	OfferPriceRS/Response/PricedOffer/Offer/OfferItem/Service/ServiceAssociations/ServiceDefinitionRef		References the ID of the Service Definition and corresponding Segments in Datalists.
PaxJourneyRefID	1	O	OfferPriceRS/Response/PricedOffer/Offer/OfferItem/Service/ServiceAssociations/ServiceDefinitionRef/PaxJourneyRefID		Reference to one Journey in the Datalists that are being sold as part of this OfferItem/Service.
PriceDesignation	Repetition	Status	Location		Comments
TotalAmount	1	M	OfferPriceRS/Response/PricedOffer/Offer/OfferItem/Price/TotalAmount		
Base Amount	1	M	OfferPriceRS/Response/PricedOffer/Offer/OfferItem/Price/Base Amount		Base Amount excluding taxes, fees, and surcharges.
Total amount CurCode	1	M	OfferPriceRS/Response/PricedOffer/Offer/OfferItem/Price/TotalAmount/@CurCode		

Discount	1	O	OfferPriceRS/Response/PricedOffer/Offer/OfferItem/Price/Discount	Deduction from the price amount, made in advance of its payment.
Pre Discounted Amount	1	O	OfferPriceRS/Response/PricedOffer/Offer/OfferItem/Price/Discount/PreDiscountedAmount	The original price on which the discount was applied to.
Discount Text	1	O	OfferPriceRS/Response/PricedOffer/Offer/OfferItem/Price/Discount/DescText	Reason for discount. Ex: HOLIDAY
Keyword Text	1	O	OfferPriceRS/Response/PricedOffer/Offer/OfferItem/Price/Discount/DiscountContext/KeywordText	Discount ID
Discount Value Text	1	O	OfferPriceRS/Response/PricedOffer/Offer/OfferItem/Price/Discount/DiscountContext/ValueText	Key Word value pair with the Keyword Text.
Fee	1..N	M	OfferPriceRS/Response/PricedOffer/Offer/OfferItem/Price/Fee	Mandatory if the parent element is present.

Fee amount	1	M	OfferPriceRS/Response/PricedOffer/Offer/OfferItem/Price/Fee/Amount	repetition is unique inside each Fee parent element
Fee amount CurCode	1	M	OfferPriceRS/Response/PricedOffer/Offer/OfferItem/Price/Fee/Amount/@CurCode	
Total Tax amount	1	M	OfferPriceRS/Response/PricedOffer/Offer/OfferItem/Price/TaxSummary/TotalTaxAmount	It is equal to the sum of Total amount over all passengers and fees Total if applicable
Total Tax amount CurCode	1	M	OfferPriceRS/Response/PricedOffer/Offer/OfferItem/Price/TaxSummary/TotalTaxAmount/@CurCode	

```

<PricedFlightOffers>
  <PricedFlightOffer>
    <OfferID
Owner="6X">QWASZXERDFCVTYGHBNUIJKNMF67D5F9GHR567SWER41SD458F9456FMDIRTN34DF</OfferID>
    <OfferPrice
OfferItemID="QWASZXERDFCVTYGHBNUIJKNMF67D5F9GHR567SWER41SD458KJJSHGDHY545D">
      <RequestedDate>
        <PriceDetail>
          <TotalAmount>
            <DetailCurrencyPrice>
              <Total>100</Total>
              <Details>
                <Detail refs="PAX1">
                  <SubTotal>100</SubTotal>
                  <Application>TOTAL AMOUNT
PAX1</Application>
                </Detail>
                <Detail refs="PAX1">
                  <SubTotal>80</SubTotal>
                  <Application>BASE AMOUNT
PAX1</Application>
                </Detail>
              <Detail refs="PAX1">

```

```

                                <SubTotal>101.01</SubTotal>
                                <Application>TAXES AMOUNT
PAX1</Application>
                                </Detail>
                                </Details>
                                <Taxes>
                                    <Total>101.01</Total>
                                    <Breakdown>
                                        <Tax refs="PAX1">
                                            <Amount>96.00</Amount>
                                            <Nation>YR</Nation>
                                            <TaxCode>VB</TaxCode>
                                        </Tax>
                                        <Tax refs="PAX1">
                                            <Amount>5.01</Amount>
                                            <Nation>DQ</Nation>
                                            <TaxCode>AP</TaxCode>
                                        </Tax>
                                    </Breakdown>
                                </Taxes>
                                <Fees>
                                    <Total>1.73</Total>
                                    <Breakdown>
                                        <Fee refs="PAX1" RefundInd="false">
                                            <Amount>0.74</Amount>
                                            <Designator>OB</Designator>
                                            <Description>CC fee</Description>
                                            <Nature>FCA</Nature>
                                        </Fee>
                                    </Breakdown>
                                </Fees>
                                </DetailCurrencyPrice>
                                </TotalAmount>
                                <BaseAmount>0</BaseAmount>
                                </PriceDetail>
                                <Associations>
                                    <AssociatedTraveler>
                                        <TravelerReferences>PAX1</TravelerReferences>
                                    </AssociatedTraveler>
                                    <ApplicableFlight>
                                        <FlightReferences>FLT1</FlightReferences>
                                    </ApplicableFlight>
                                    <PriceClass>
                                        <PriceClassReference>VALUE230</PriceClassReference>
                                    </PriceClass>
                                    <IncludedService>
                                        <ServiceReferences>SRV1</ServiceReferences>
                                    </IncludedService>
                                    <OtherAssociation>
                                        <OtherAssociation>
                                            <Type>CheckedBagAllowance</Type>
                                            <ReferenceValue>FBA1</ReferenceValue>
                                        </OtherAssociation>
                                    </OtherAssociation>
                                </Associations>
                                </RequestedDate>
                                <FareDetail>
                                    <FareComponent refs="PAX1 VALUE230">
                                        <SegmentReference>SEG1</SegmentReference>
                                        <FareBasis>
                                            <FareBasisCode>
                                                <Code>YPROFI</Code>
                                            </FareBasisCode>
                                            <RBD>M</RBD>
                                        </FareBasis>
                                </FareDetail>

```

```

        <FareRules>
          <CorporateFare>
            <Account>AMADEUS1</Account>
          </CorporateFare>
        </FareRules>
      </FareComponent>
    </FareDetail>
  </OfferPrice>
  <TimeLimits/>
  <Associations/>
</PricedFlightOffer>
</PricedFlightOffers>

```

3.2.6 PaxList

This element contains the list of passengers for which the offer has been priced. You will find here the same passengers requested in *OfferPriceRQ*, with the same *PaxID* values. The *OfferPriceRS* returns, for each passenger, the key ID and the PTC.

- **PaxID**: the same value given in input by the user is returned in the reply, so that the calling application can keep track of the products and the prices associated to each passenger.
- **PTC**: passenger type code

PaxListDesignation	Repetition	Status	Location	Comments
PaxID	1	M	OfferPriceRS/Response/DataLists/PaxList/Pax/PaxID	Unique passenger ID. Ex: PAX1, PAX2, ..
PTC	1	O	OfferPriceRS/Response/DataLists/PaxList/Pax/PTC	

```

<PaxList>
  <Pax>
    <PaxID>PAX1</PaxID>
    <PTC>ADT</PTC>
  </Pax>
</PaxList>

```

3.2.7 PaxSegmentList

The list of segment details is returned in this element.

For each segment the following information are given:

- **PaxSegmentId**: unique segment identifier, stored in the offer
- **Departure Airport Code**: the 3-letters IATA code of the departure airport
- **Departure date time**
- **Arrival Airport Code**: the 3-letters IATA code of the arrival airport

- Arrival date time
- Marketing carrier code
- Flight number
- Operating carrier, if different than marketing carrier

FlightSegmentDesignation	Repetition	Status	Location	Comments
PaxSegmentId	1	M	OfferPriceRS/Response/DataLists/PaxSegmentList/PaxSegment/PaxSegmentId	Unique segment ID. Ex: SEG1, SEG2, ..
Departure Airport Code	1	M	OfferPriceRS/Response/DataLists/PaxSegmentList/PaxSegment/Dep/IATA_LocationCode	3-letters IATA code
Departure Date	1	M	OfferPriceRS/Response/DataLists/PaxSegmentList/PaxSegment/Dep/AircraftScheduledDateTime	Format: YYYY-MM-DDTHH:MM:SSZ
Departure Terminal Name	1	O	OfferPriceRS/Response/DataLists/PaxSegmentList/PaxSegment/Dep/TerminalName	The name of the terminal.
Arrival Airport Code	1	M	OfferPriceRS/Response/DataLists/PaxSegmentList/PaxSegment/Arrival/IATA_LocationCode	3-letters IATA code
Arrival Date	1	M	OfferPriceRS/Response/DataLists/PaxSegmentList/PaxSegment/Arrival/AircraftScheduledDateTime	Format: YYYY-MM-DDTHH:MM:SSZ
Arrival Terminal Name	1	O	OfferPriceRS/Response/DataLists/PaxSegmentList/PaxSegment/Arrival/TerminalName	The name of the terminal.
Marketing Carrier Code	1	M	OfferPriceRS/Response/DataLists/PaxSegmentList/PaxSegment/MarketingCarrierInfo/CarrierDesigCode	2-letters IATA code
Marketing Carrier Name	1	O	OfferPriceRS/Response/DataLists/PaxSegmentList/PaxSegment/MarketingCarrierInfo/CarrierName	Commercial name of the carrier.

Flight Number	1	O	OfferPriceRS/Response/DataLists/PaxSegmentList/PaxSegment/MarketingCarrierInfo/MarketingCarrierFlightNumberText	The numerical designation of a flight as it is marketed by a carrier.
Operational Suffix Text	1	M	OfferPriceRS/Response/DataLists/PaxSegmentList/PaxSegment/MarketingCarrierInfo/OperationalSuffixText	
Operating Carrier	1	O	OfferPriceRS/Response/DataLists/PaxSegmentList/PaxSegment/OperatingCarrierInfo/CarrierDesigCode	2-letters IATA code
Operating Carrier Name	1	O	OfferPriceRS/Response/DataLists/PaxSegmentList/PaxSegment/OperatingCarrierInfo/CarrierName	Commercial name of the carrier.

```

<PaxSegmentList>
  <PaxSegment>
    <PaxSegmentId>SEG16</PaxSegmentId>
    <Dep>
      <IATA_LocationCode>LGW</IATA_LocationCode>
      <AircraftScheduledDateTime>2001-09-21T17:30:47Z</AircraftScheduledDateTime>
    </Departure>
    <Arrival>
      <IATA_LocationCode>JFK</IATA_LocationCode>
      <AircraftScheduledDateTime>2001-09-30T09:30:47Z</AircraftScheduledDateTime>
    </Arrival>
    <MarketingCarrierInfo>
      <CarrierDesigCode>6X</CarrierDesigCode>
      <MarketingCarrierFlightNumberText>5431</MarketingCarrierFlightNumberText>
    </MarketingCarrierInfo>
    <OperatingCarrierInfo>
      <CarrierDesigCode>7X</CarrierDesigCode>
    </OperatingCarrierInfo>
  </PaxSegment>
</PaxSegmentList>

```

3.2.8 OriginDestList

Origin Destination data list definition.

OriginDestDesignation	Repetition	Status	Location	Comments
-----------------------	------------	--------	----------	----------

OriginDestID	1	O	OfferPriceRS/Response/DataLists/OriginDestList/OriginDest/OriginDestID	Uniquely identifies an Origin Destination within the context of one message.
OriginCode	1	M	OfferPriceRS/Response/DataLists/OriginDestList/OriginDest/OriginCode	IATA defined code identifying a city or station.
DestCode	1	M	OfferPriceRS/Response/DataLists/OriginDestList/OriginDest/DestCode	IATA defined code identifying a city or station.
PaxJourneyRefID	1..99	O	OfferPriceRS/Response/DataLists/OriginDestList/OriginDest/PaxJourneyRefID	Reference to Passenger Journey IDs within this message.

```

<OriginDestList>
  <OriginDest>
    <OriginDestID>HELCDG</OriginDestID>
    <OriginCode>HEL</OriginCode>
    <DestCode>CDG</DestCode>
    <PaxJourneyRefID>FLT2</PaxJourneyRefID>
    <PaxJourneyRefID>FLT4</PaxJourneyRefID>
  </OriginDest>
  <OriginDest>
    <OriginDestID>CDGHEL</OriginDestID>
    <OriginCode>CDG</OriginCode>
    <DestCode>HEL</DestCode>
    <PaxJourneyRefID>FLT3</PaxJourneyRefID>
    <PaxJourneyRefID>FLT1</PaxJourneyRefID>
  </OriginDest>
</OriginDestList>

```

```
</OriginDest>
</OriginDestList>
```

3.2.9 PaxJourneyList

The list of flights composing the itinerary and the segment composing them is returned in this element. In current *OfferPrice* implementation, each flight is composed by one segment. For each flight the following information are given:

- PaxJourneyID: unique flight identifier, stored in the offer
- Segment References: *PaxSegmentRefID* of the segment composing the flight

Flight Designation	Repetition	Status	Location	Comments
PaxJourneyID	1	M	OfferPriceRS/Response/DataLists/PaxJourneyList/PaxJourney/PaxJourneyID	Unique flight ID. Ex: JRN1, JRN2, ..
Duration	1	O	OfferPriceRS/Response/DataLists/PaxJourneyList/PaxJourney/Duration	Total journey time including the combined air time and connection times. In case of stopover, this may or may not include stopover durations.
Segment Reference	1	M	OfferPriceRS/Response/DataLists/PaxJourneyList/PaxJourney/PaxSegmentRefID	ID of the segment composing the flight. Ex: SEG1, SEG2, ..

```

<PaxJourneyList>
  <PaxJourney>
    <PaxJourneyID>FLT3</PaxJourneyID>
    <Duration>PT2H55M</Duration>
    <PaxSegmentRefID>SEG3</PaxSegmentRefID>
  </PaxJourney>
  <PaxJourney>
    <PaxJourneyID>FLT1</PaxJourneyID>
    <Duration>PT6H30M</Duration>
    <PaxSegmentRefID>SEG14</PaxSegmentRefID>
    <PaxSegmentRefID>SEG15</PaxSegmentRefID>
  </PaxJourney>
  <PaxJourney>
    <PaxJourneyID>FLT2</PaxJourneyID>
    <Duration>PT7H30M</Duration>
    <PaxSegmentRefID>SEG25</PaxSegmentRefID>
    <PaxSegmentRefID>SEG26</PaxSegmentRefID>
  </PaxJourney>
  <PaxJourney>
    <PaxJourneyID>FLT4</PaxJourneyID>
    <Duration>PT3H5M</Duration>
    <PaxSegmentRefID>SEG16</PaxSegmentRefID>
  </PaxJourney>
</PaxJourneyList>

```

3.2.10 BagAllowanceList

One or several *BagAllowance* elements can be present for each offer item containing flights. Two types of checked baggage allowance are possible:

- Piece Allowance
- Weight Allowance

In case of piece allowance the following information are returned:

- BaggageAllowanceID: unique allowance identifier
- Applicable Party: this element specifies the allowance application. The value is always *Traveler*, meaning that each Checked Bag Allowance applies to a single passenger
- Total Quantity: number of bag pieces included in the allowance
- Piece Dimensions Allowance: it indicates we are measuring the allowance in PC (pieces). The attribute *Qty* is mandatory in the XSD and it repeats the same value given above in *TotalQty*

BagAllowance (Piece)Designation	Repetition	Status	Location	Comments
BaggageAllowanceID	1	M	OfferPriceRS/Response/DataLists/BaggageAllowanceList/BaggageAllowance/BaggageAllowanceID	Unique list ID. Ex: FBA1, FBA2, ..

TypeCode	1	M	OfferPriceRS/Response/DataLists/BaggageAllowanceList/BaggageAllowance/TypeCode	Type of Baggage Allowance. Example: CheckedBag
Applicable Party Text	1	M	OfferPriceRS/Response/DataLists/BaggageAllowanceList/BaggageAllowance/PieceAllowance/ApplicablePartyText	Baggage weight restriction on application. Value: Traveler
Total Quantity	1	M	OfferPriceRS/Response/DataLists/BaggageAllowanceList/BaggageAllowance/PieceAllowance/TotalQty	Maximum pieces of baggage allowed.
Piece Dimensions Allowance	1	O	OfferPriceRS/Response/DataLists/BaggageAllowanceList/BaggageAllowance/PieceAllowance/PieceDimensionsAllowance	Baggage dimension allowance with application information.
Piece Dimensions Allowance Quantity	1	O	OfferPriceRS/Response/DataLists/BaggageAllowanceList/BaggageAllowance/PieceAllowance/PieceDimensionsAllowance/Qty	Quantity of pieces allowed with these measurements.

```

<BaggageAllowanceList>
  <BaggageAllowance>
    <BaggageAllowanceID>FBA1</BaggageAllowanceID>
    <TypeCode>Checked</TypeCode>
    <PieceAllowance>
      <ApplicablePartyText>Traveler</ApplicablePartyText>
      <TotalQty>1</TotalQty>
      <PieceDimensiobsAllowance>
        <Qty>1</Qty>
      </PieceDimensiobsAllowance>
    </PieceAllowance>
  </BaggageAllowance>
</BaggageAllowanceList>

```

In case of weight allowance the following information are returned:

- BaggageAllowanceID: unique allowance identifier
- Applicable Bag: this element specifies the allowance application. The value is always *Traveler*, meaning that each Checked Bag Allowance applies to a single passenger
- Maximum Weight Measure: weight value
- Maximum Weight Unit Of Measure: unit of measure for the weight given above

BagAllowa nce (Weight)D esignatio n	Repe tition	St atu s	Location	Com ment s
BaggageA llowancel D	1	M	OfferPriceRS/Response/DataLists/BaggageAllowanceList/Baggage Allowance/BaggageAllowanceID	Uniqu e list ID. Ex: FBA1 , FBA2 , ..
Applicable Bag	1	M	OfferPriceRS/Response/DataLists/BaggageAllowanceList/Baggage Allowance/WeightAllowance/ApplicableBagText	Value : Trave ler
Maximum Weight Measure	1	M	OfferPriceRS/Response/DataLists/BaggageAllowanceList/Baggage Allowance/WeightAllowance/MaximumWeightMeasure	
Weight Unit of Measure	1	M	OfferPriceRS/Response/DataLists/BaggageAllowanceList/Baggage Allowance/WeightAllowance/MaximumWeightMeasure/@UnitCode	K = Kilogr ams, L = Poun ds (PAD IS

Code set 6411)

```
<BagAllowance>
  <BagAllowanceID>FBA1</BagAllowanceID>
  <WeightAllowance>
    <ApplicableParty>Traveler</ApplicableParty>
    <MaximumWeight UnitCode="Kilogram">
      <MaximumWeightMeasure>23</MaximumWeightMeasure>
    </MaximumWeight>
  </WeightAllowance>
</BagAllowance>
```

3.2.11 ServiceDefinitionList

Service Definition data list definition.

ServiceDefinitionDesignation	Repetition	Status	Location	Comments
ServiceDefinitionID	1	M	OfferPriceRS/Response/DataLists/ServiceDefinitionList/ServiceDefinition/ServiceDefinitionID	Uniquely identifies a Service Definition within the context of one message.
OwnerCode	1	O	OfferPriceRS/Response/DataLists/ServiceDefinitionList/ServiceDefinition/OwnerCode	Airline code assigned to a carrier.
Name	1	M	OfferPriceRS/Response/DataLists/ServiceDefinitionList/ServiceDefinition/Name	Service name. Example: Lounge Pass
ServiceCode	1	O	OfferPriceRS/Response/DataLists/ServiceDefinitionList/ServiceDefinition/ServiceCode	Airline specific service code which can be associated with

				the Reason for Issuance Sub Code.
ReasonForIssuanceCode	1	O	OfferPriceRS/Response/DataLists/ServiceDefinitionList/ServiceDefinition/ReasonForIssuanceCode	Reason For Issuance Code Examples: A (Air Transportation) C (Baggage) E (Airport Services) F (Merchandise) G (In-flight Services)
ReasonForIssuanceSubCode	1	O	OfferPriceRS/Response/DataLists/ServiceDefinitionList/ServiceDefinition/ReasonForIssuanceSubCode	Reason For Issuance Sub Code. Examples: OCC (First Checked Bag) OB1 (In-flight Entertainment) OBX (Lounge)
Description	1..n	M	OfferPriceRS/Response/DataLists/ServiceDefinitionList/ServiceDefinition/Description	An account or representation of the certain or major aspects, characteristics, or

				features of a person, object, or event.
DescID	1	M	OfferPriceRS/Response/DataLists/ServiceDefinitionList/ServiceDefinition/Description/DescID	Unique identifier of this Description.
DescText	1	O	OfferPriceRS/Response/DataLists/ServiceDefinitionList/ServiceDefinition/Description/DescText	Description text value.

```
<ServiceDefinitionList>
  <ServiceDefinition>
    <ServiceDefinitionID>SRV1</ServiceDefinitionID>
    <OwnerCode>6X</OwnerCode>
    <Name>PRE PAID BAGGAGE</Name>
    <ReasonForIssuanceCode>C</ReasonForIssuanceCode>
    <ReasonForIssuanceSubCode>0AA</ReasonForIssuanceSubCode>
    <Description>
      <DescID>D1</DescID>
      <DescText>Group: SA</DescText>
    </Description>
  </ServiceDefinition>
</ServiceDefinitionList>
```

3.2.12 PriceClassList

Details on the fare families are returned in the PriceClass element as follows:

- **Name:** Fare family name
- **Descriptions:** a list of descriptions in a localized free text format. Each description is flagged with a key that determine to which fare family rule belong the description. A localized description of each rule is return in /OfferPriceRS/Metadata/Other/OtherMetadata/DescriptionMetadatas section.

PriceClassDesignation	Repetition	Status	Location	Comments
PriceClassID	1	M	OfferPriceRS/Response/DataLists/PriceClassList/PriceClass/PriceClassID	Unique fare family ID. Ex: FFM1, FFM2, ..
Name	1	O	OfferPriceRS/Response/DataLists/PriceClassList/PriceClass/Name	Fare family name.

PriceClass Description	Designation	Repetition	Status	Location	Comments
Desc		0..n	O	OfferPriceRS/Response/DataLists/PriceClassList/PriceClass/Desc	List of localized descriptions (/text()) and their corresponding rule.
DescID		1	M	OfferPriceRS/Response/DataLists/PriceClassList/PriceClass/Desc/DescID	Unique identifier of this Description.
Fare family description		1	O	OfferPriceRS/Response/DataLists/PriceClassList/PriceClass/Desc/DescText	Description text value.

```

<PriceClassList>
  <PriceClass ProceClassID="FFM1">
    <Name>FB ECONOMY LIGHT</Name>
    <Descriptions>
      <Description>
        <Text refs="prioCheck">No</Text>
      </Description>
      <Description>
        <Text refs="selectSeat">Chargeable</Text>
      </Description>
      <Description>
        <Text refs="prioSec">No</Text>
      </Description>
      <Description>
        <Text refs="bagAllo">1 bag</Text>
      </Description>
      <Description>
        <Text refs="rebook">50 EUR *</Text>
      </Description>
      <Description>
        <Text refs="loungAcc">No</Text>
      </Description>
      <Description>
        <Text refs="nameChange">50 EUR</Text>
      </Description>
      <Description>
        <Text refs="cancel">Charge 50% / No refund</Text>
      </Description>
      <Description>
        <Text refs="checkBags">0 bag</Text>
      </Description>
    </Descriptions>
  </PriceClass>
</PriceClassList>

```

Note: In this example fare conditions are returned in English. Other languages are available as soon as provided by the airline. The chosen language has to be sent in OfferPrice request (OfferPriceRQ/Parameters/Languages/LanguageCode).

In case no language is received in the request, the descriptions are returned in English.

3.2.13 DescriptionMetadatas

Details on the fare families characteristics are returned in the DescriptionMetadata element as follows:

- **Key:** Fare family name
- **Topic:** description of the rule in a localized free text format.

DescriptionMetadata	Repetition	Status	Location	Comments
ObjectKey	1	M	OfferPriceRS/Response/Metadatas/Other/OtherMetadatas/DescriptionMetadatas/DescriptionMetadata[n]/@MetadataKey	Unique rule ID. Ex: bagAllo, cancel, lounge Acc..
Description topic	1	O	OfferPriceRS/Response/Metadatas/Other/OtherMetadatas/DescriptionMetadatas/DescriptionMetadata[n]/Topic	Localized description of the rule.

```

<OtherMetadatas>
  <DescriptionMetadatas>
    <DescriptionMetadata MetadataKey="bagAllo">
      <Topic>Carry-on baggage max. 8kg/bag</Topic>
    </DescriptionMetadata>
    <DescriptionMetadata MetadataKey="cancel">
      <Topic>Cancellation (before / after departure)</Topic>
    </DescriptionMetadata>
    <DescriptionMetadata MetadataKey="checkBags">
      <Topic>Checked baggage max. 23kg/bag</Topic>
    </DescriptionMetadata>
    <DescriptionMetadata MetadataKey="loungeAcc">
      <Topic>Lounge access</Topic>
    </DescriptionMetadata>
    <DescriptionMetadata MetadataKey="nameChange">
      <Topic>Name change</Topic>
    </DescriptionMetadata>
    <DescriptionMetadata MetadataKey="prioCheck">
      <Topic>Priority check-in \& boarding</Topic>
    </DescriptionMetadata>
    <DescriptionMetadata MetadataKey="prioSec">

```

```

        <Topic>Priority security</Topic>
    </DescriptionMetadata>
    <DescriptionMetadata MetadataKey="rebook">
        <Topic>Changes (before / after departure)</Topic>
    </DescriptionMetadata>
    <DescriptionMetadata MetadataKey="selectSeat">
        <Topic>Seat selection</Topic>
    </DescriptionMetadata>
</DescriptionMetadatas>
</OtherMetadata>

```

Note: In this example fare conditions are returned in English. Other languages are available as soon as provided by the airline. The chosen language has to be sent in OfferPrice request (OfferPriceRQ/Parameters/Languages/LanguageCode). In case no language is received in the request, the descriptions are returned in English.

4 Troubleshooting

4.1 Errors

In this section we describe the OfferPriceRS in case of errors occurred during the process.

- **Input validation errors**

If the *OfferPriceRQ* does not respect the schema the system sends the following error:

UNABLE TO PROCESS SYNTAX ERROR ([CM#903](#))

If the *OfferPriceRQ* does not contain the mandatory input (for example, missing ObjectKey) the system sends the following error:

UNABLE TO PROCESS SYSTEM ERROR ([CM#911](#))

If the *OfferPriceRQ* contains an invalid passenger type the system sends the following error:

INVALID OR INELIGIBLE PASSENGER TYPE CODE ([CM#143](#))

If the *OfferPriceRQ* contains a currency code different than the one stored in Offer during shopping time, the system sends the following error:

INCONSISTENT INFORMATION BETWEEN THE REQUEST AND THE STORED OFFER ([CM#996](#))

- **Errors related to the offer**

When the system is unable to retrieve the offer from the specified ID the system returns the following error:

UNABLE TO RETRIEVE OFFER ([CM#](#))

```

<OfferPriceRS>
  <Error>903
    <DescText>UNABLE TO PROCESS SYNTAX ERROR</DescText>
  </Error>
</OfferPriceRS>

```


4.2 Warnings

- **Frequent Flyer related warning**

When frequent flyer data are sent in the query, the system validates their validity. If the frequent traveler information from the input are invalid, the process does not stop but the response is enriched with a warning appended message to inform user that at least one frequent flyer number/data in the query is not valid.

INVALID FREQUENT TRAVELER NUMBER ([CM#260](#))

- **PTC related warning**

When PTC data are sent in the query, the system validates their validity. If a PTC from the input doesn't match the PTC that has been returned in *AirShoppingRS* for the same passenger ID, the process does not stop but the response is enriched with a warning appended message to inform user that at least one PTC in the query is not the correct one.

INVALID OR INELIGIBLE PASSENGER TYPE CODE ([CM#143](#))

5 Detailed Use Cases

5.1 OfferPrice for one adult passenger requesting a one-way flight

5.1.1 Use Case Description

A *OfferPriceRQ* is sent for one adult passenger requesting a price for an offer. The offer contains one flight, no included or chargeable services. The passenger is anonymous. Payment card information are sent in input and they have no impact on the price of the offer.

5.1.2 Preconditions

- *AirShopping* was previously run and an offer was stored in the system.
- The offer is valid.

5.1.3 Query

```
<OfferPriceRQ Version="String" xsi:schemaLocation="http://www.iata.org/IATA/EDIST
OfferPriceRQ.xsd" xmlns="http://www.iata.org/IATA/EDIST"
xmlns:xsi="http://www.w3.org/2001/XMLSchema-instance">
  <Document/>
  <Party>
    <Sender>
      <TravelAgency>
        <AgencyID>OfficeID</AgencyID>
      </TravelAgency>
    </Sender>
  </Party>
  <Request>
    <Paxs>
      <Pax>
        <PaxID>PAX1</PaxID>
      </Pax>
    </Paxs>
  </Request>
</OfferPriceRQ>
```

```

    <PricedOffer>
      <SelectedOffer>

<OfferRefID>QWASZXERDFCVTYGHBNUIJKNMF67D5F9GHR567SWER41SD458F9456FMDIRTN34DF</OfferRefID>

      <OwnerCode>6X</OwnerCode>
      <SelectedOfferItem>

<OfferItemRefID>QWASZXERDFCVTYGHBNUIJKNMF67D5F9GHR567SWER41SD458KJJSHGDHY545D</OfferItemRefID>
      </SelectedOfferItem>
    </SelectedOffer>
  </PricedOffer>
  <PaymentCardQualifiers>
    <Type>VI</Type>
    <IIN_Number>123456</IIN_Number>
  </PaymentCardQualifiers>
</Request>
</OfferPriceRQ>

```

5.1.4 Reply

```

<OfferPriceRS
xsi:schemaLocation="http://www.iata.org/IATA/2015/00/2018.1/OfferPriceRS
OfferPriceRS.xsd" xmlns:n1="http://www.altova.com/samplexml/other-namespace"
xmlns:k="http://www.iata.org/IATA/2015/00/2018.1/OfferPriceRS"
xmlns:xsi="http://www.w3.org/2001/XMLSchema-instance">
  <Response>
    <DataLists>
      <BaggageAllowanceList>
        <BaggageAllowance>
          <BaggageAllowanceID>FBA1</BaggageAllowanceID>
          <TypeCode>CheckedBag</TypeCode>
          <PieceAllowance>

<ApplicablePartyText>Traveler</ApplicablePartyText>
          <TotalQty>1</TotalQty>
          <PieceDimensionAllowance>
            <Qty>1</Qty>
          </PieceDimensionAllowance>
        </PieceAllowance>
      </BaggageAllowance>
    </BaggageAllowanceList>
    <PaxJourneyList>
      <PaxJourney>
        <PaxJourneyID>FLT1</PaxJourneyID>
        <PaxSegmentRefID>SEG1</PaxSegmentRefID>
      </PaxJourney>
    </PaxJourneyList>
    <PaxList>
      <Pax>
        <PaxID>PAX1</PaxID>
        <PTC>ADT</PTC>
      </Pax>
    </PaxList>
    <PaxSegmentList>
      <PaxSegment>
        <PaxSegmentID>SEG1</PaxSegmentID>
        <Dep>
          <IATA_LocationCode>LHR</IATA_LocationCode>
          <AircraftScheduledDateTime>2001-09-
30T09:30:47Z</AircraftScheduledDateTime>
        </Dep>

```

```

        <Arrival>
            <IATA_LocationCode>JFK</IATA_LocationCode>
            <AircraftScheduledDateTime>2001-09-
30T19:30:47Z</AircraftScheduledDateTime>
        </Arrival>
        <MarketingCarrierInfo>
            <CarrierDesigCode>6X</CarrierDesigCode>

        <MarketingCarrierFlightNumberText>690</MarketingCarrierFlightNumberText>

        <OperationalSuffixText>a</OperationalSuffixText>
            </MarketingCarrierInfo>
        </PaxSegment>
        </PaxSegmentList>
    </DataLists>
    <PricedOffer>
        <Offer>

        <OfferID>QWASZXERDFCVTYGHBNUIJKNMF67D5F9GHR567SWER41SD458F9456FMDIRTN34DF</
OfferID>

            <OwnerCode>6X</OwnerCode>
            <OfferItem>

                <OfferItemID>QWASZXERDFCVTYGHBNUIJKNMF67D5F9GHR567SWER41SD458KJJSHGDHY545D<
/OfferItemID>

                    <FareDetail>
                        <PassengerRefs>PAX1</PassengerRefs>
                        <Price>
                            <TotalAmount>
                                <DetailCurrencyPrice>
                                    <Total>100.74</Total>
                                </DetailCurrencyPrice>
                            </TotalAmount>
                            <BaseAmount>0</BaseAmount>
                            <Taxes>
                                <Total>101.01</Total>
                                <Breakdown>
                                    <Tax>
                                        <Amount
Code="EUR">96.00</Amount>

                                    <Nation>YR</Nation>

                                    <TaxCode>VB</TaxCode>

                                        </Tax>
                                        <Tax>
                                            <Amount
Code="EUR">5.01</Amount>

                                        <Nation>DQ</Nation>

                                        <TaxCode>AP</TaxCode>

                                            </Tax>

                                                </Breakdown>
                                                </Taxes>
                                            </Price>
                                        </FareDetail>
                                    <Price>
                                        <TotalAmount>100.74</TotalAmount>
                                    </Price>
                                </OfferItem>
                            </Offer>
                        </PricedOffer>
                    </Response>
                </OfferPriceRS>

```

5.2 OfferPrice for one adult passenger requesting a one-way flight with no free baggage allowance information

5.2.1 Use Case Description

A *OfferPriceRQ* is sent for one adult passenger requesting a price for an offer. The offer contains one flight, no included or chargeable services and no free checked baggage allowance information is found in the fare. The passenger is anonymous. Payment card information are sent in input and they have no impact on the price of the offer.

5.2.2 Preconditions

- *AirShopping* was previously run and an offer was stored in the system.
- The offer is valid.

5.2.3 Query

Same as Example 5.1.

```
<OfferPriceRQ Version="String" xsi:schemaLocation="http://www.iata.org/IATA/EDIST
OfferPriceRQ.xsd" xmlns="http://www.iata.org/IATA/EDIST"
xmlns:xsi="http://www.w3.org/2001/XMLSchema-instance">
  <Document/>
  <Party>
    <Sender>
      <TravelAgency>
        <AgencyID>OfficeID</AgencyID>
      </TravelAgency>
    </Sender>
  </Party>
  <Request>
    <Paxs>
      <Pax>
        <PaxID>PAX1</PaxID>
      </Pax>
    </Paxs>
    <PricedOffer>
      <SelectedOffer>

<OfferRefID>QWASZXERDFCVTYGHBNUIJKNMF67D5F9GHR567SWER41SD458F9456FMDIRTN34DF</OfferRefID>
      <OwnerCode>6X</OwnerCode>
      <SelectedOfferItem>

<OfferItemRefID>QWASZXERDFCVTYGHBNUIJKNMF67D5F9GHR567SWER41SD458KJJSHGDHY545D</OfferItemRefID>
      </SelectedOfferItem>
    </SelectedOffer>
  </PricedOffer>
  <PaymentCardQualifiers>
    <Type>VI</Type>
    <IIN_Number>123456</IIN_Number>
  </PaymentCardQualifiers>
</Request>
</OfferPriceRQ>
```

5.2.4 Reply

```

<OfferPriceRS
xsi:schemaLocation="http://www.iata.org/IATA/2015/00/2018.1/OfferPriceRS
OfferPriceRS.xsd" xmlns:n1="http://www.altova.com/samplexml/other-namespace"
xmlns:k="http://www.iata.org/IATA/2015/00/2018.1/OfferPriceRS"
xmlns:xsi="http://www.w3.org/2001/XMLSchema-instance">
  <Response>
    <DataLists>
      <PaxJourneyList>
        <PaxJourney>
          <PaxJourneyID>FLT1</PaxJourneyID>
          <PaxSegmentRefID>SEG1</PaxSegmentRefID>
        </PaxJourney>
      </PaxJourneyList>
      <PaxList>
        <Pax>
          <PaxID>PAX1</PaxID>
          <PTC>ADT</PTC>
        </Pax>
      </PaxList>
      <PaxSegmentList>
        <PaxSegment>
          <PaxSegmentID>SEG1</PaxSegmentID>
          <Dep>
            <IATA_LocationCode>LHR</IATA_LocationCode>
            <AircraftScheduledDateTime>2001-09-
30T09:30:47Z</AircraftScheduledDateTime>
          </Dep>
          <Arrival>
            <IATA_LocationCode>JFK</IATA_LocationCode>
            <AircraftScheduledDateTime>2001-09-
30T19:30:47Z</AircraftScheduledDateTime>
          </Arrival>
          <MarketingCarrierInfo>
            <CarrierDesigCode>6X</CarrierDesigCode>

            <MarketingCarrierFlightNumberText>690</MarketingCarrierFlightNumberText>

            <OperationalSuffixText>a</OperationalSuffixText>

          </MarketingCarrierInfo>
        </PaxSegment>
      </PaxSegmentList>
    </DataLists>
    <PricedOffer>
      <Offer>
        <OfferID>QWASZXERDFCVTYGHBNUIJKNMF67D5F9GHR567SWER41SD458F9456FMDIRTN34DF</
OfferID>
        <OwnerCode>6X</OwnerCode>
        <OfferItem>
          <OfferItemID>QWASZXERDFCVTYGHBNUIJKNMF67D5F9GHR567SWER41SD458KJJSHGDHY545D<
/OfferItemID>
          <FareDetail>
            <PassengerRefs>PAX1</PassengerRefs>
            <Price>
              <TotalAmount>
                <DetailCurrencyPrice>
                  <Total>100.74</Total>
                </DetailCurrencyPrice>
              </TotalAmount>
              <BaseAmount>0</BaseAmount>
              <Taxes>
                <Total>101.01</Total>
                <Breakdown>
                  <Tax>

```

```

Code="EUR">96.00</Amount>
    <Nation>YR</Nation>
    <TaxCode>VB</TaxCode>
    </Tax>
    <Tax>
    <Amount
Code="EUR">5.01</Amount>
    <Nation>DQ</Nation>
    <TaxCode>AP</TaxCode>
    </Tax>
    </Breakdown>
    </Taxes>
    </Price>
</FareDetail>
<Price>
    <TotalAmount>100.74</TotalAmount>
    </Price>
</OfferItem>
</Offer>
</PricedOffer>
</Response>
</OfferPriceRS>

```

5.3 OfferPrice for two adult passengers requesting a one-way flight

5.3.1 Use Case Description

A *OfferPriceRQ* is sent for two adult passengers requesting a price for an offer. The offer contains one flight, no included or chargeable services. The passengers are anonymous. The same fare conditions apply to all passengers. Payment card information are sent in input and they have no impact on the price of the offer.

5.3.2 Preconditions

- *AirShopping* was previously run and an offer was stored in the system.
- The offer is valid.

5.3.3 Query

```

<OfferPriceRQ Version="String" xsi:schemaLocation="http://www.iata.org/IATA/EDIST
OfferPriceRQ.xsd" xmlns="http://www.iata.org/IATA/EDIST"
xmlns:xsi="http://www.w3.org/2001/XMLSchema-instance">
  <Document/>
  <Party>
    <Sender>
      <TravelAgency>
        <AgencyID>OfficeID</AgencyID>
      </TravelAgency>
    </Sender>
  </Party>
  <Request>

```

```

    <Pax>
      <Pax>
        <PaxID>PAX1</PaxID>
      </Pax>
    </Pax>
    <Pax>
      <PaxID>PAX2</PaxID>
    </Pax>
  </Paxs>
  <PricedOffer>
    <SelectedOffer>
      <OfferRefID>QWASZXERDFCVTYGHBNUIJKNMF67D5F9GHR567SWER41SD458F9456FMDIRTN34DF</OfferRefID>
      <OwnerCode>6X</OwnerCode>
      <SelectedOfferItem>
        <OfferItemRefID>QWASZXERDFCVTYGHBNUIJKNMF67D5F9GHR567SWER41SD458KJJSHGDHY545D</OfferItemRefID>
        </SelectedOfferItem>
      </SelectedOffer>
    </PricedOffer>
    <PaymentCardQualifiers>
      <Type>VI</Type>
      <IIN_Number>123456</IIN_Number>
    </PaymentCardQualifiers>
  </Request>
</OfferPriceRQ>

```

5.3.4 Reply

```

<OfferPriceRS
xsi:schemaLocation="http://www.iata.org/IATA/2015/00/2018.1/OfferPriceRS
OfferPriceRS.xsd" xmlns:n1="http://www.altova.com/samplexml/other-namespace"
xmlns:k="http://www.iata.org/IATA/2015/00/2018.1/OfferPriceRS"
xmlns:xsi="http://www.w3.org/2001/XMLSchema-instance">
  <Response>
    <DataLists>
      <BaggageAllowanceList>
        <BaggageAllowance>
          <BaggageAllowanceID>FBA1</BaggageAllowanceID>
          <TypeCode>CheckedBag</TypeCode>
          <PieceAllowance>
            <ApplicablePartyText>Traveler</ApplicablePartyText>
            <TotalQty>1</TotalQty>
            <PieceDimensionAllowance>
              <Qty>1</Qty>
            </PieceDimensionAllowance>
          </PieceAllowance>
        </BaggageAllowance>
      </BaggageAllowanceList>
      <PaxJourneyList>
        <PaxJourney>
          <PaxJourneyID>FLT1</PaxJourneyID>
          <PaxSegmentRefID>SEG1</PaxSegmentRefID>
        </PaxJourney>
      </PaxJourneyList>
      <PaxList>
        <Pax>
          <PaxID>PAX1</PaxID>
          <PTC>ADT</PTC>
        </Pax>
      </PaxList>
    </DataLists>
  </Response>
</OfferPriceRS>

```



```

                </Breakdown>
            </Taxes>
        </Price>
    </FareDetail>
    <FareDetail>
        <PassengerRefs>PAX2</PassengerRefs>
        <Price>
            <TotalAmount>
                <DetailCurrencyPrice>
                    <Total>100.74</Total>
                </DetailCurrencyPrice>
            </TotalAmount>
            <BaseAmount>0</BaseAmount>
            <Taxes>
                <Total>101.01</Total>
                <Breakdown>
                    <Tax>
                        <Amount
Code="EUR">96.00</Amount>
                            <Nation>YR</Nation>
                            <TaxCode>VB</TaxCode>
                                </Tax>
                                <Tax>
                                    <Amount
Code="EUR">5.01</Amount>
                            <Nation>DQ</Nation>
                            <TaxCode>AP</TaxCode>
                                </Tax>
                                </Breakdown>
                            </Taxes>
                        </Price>
                    </FareDetail>
                <Price>
                    <TotalAmount>100.74</TotalAmount>
                </Price>
            </OfferItem>
        </Offer>
    </PricedOffer>
</Response>
</OfferPriceRS>

```

5.4 OfferPrice for one adult passenger requesting a round trip

5.4.1 Use Case Description

A *OfferPriceRQ* is sent for one adult passenger requesting a price for an offer. The offer contains two flights, no included or chargeable services. Checked baggage allowance is different for the two flights. The passenger is anonymous. Payment card information are sent in input and they have no impact on the price of the offer.

5.4.2 Preconditions

- *AirShopping* was previously run and an offer was stored in the system.
- The offer is valid.

5.4.3 Query

Same as Example 5.1.

```
<OfferPriceRQ Version="String" xsi:schemaLocation="http://www.iata.org/IATA/EDIST
OfferPriceRQ.xsd" xmlns="http://www.iata.org/IATA/EDIST"
xmlns:xsi="http://www.w3.org/2001/XMLSchema-instance">
  <Document/>
  <Party>
    <Sender>
      <TravelAgency>
        <AgencyID>OfficeID</AgencyID>
      </TravelAgency>
    </Sender>
  </Party>
  <Request>
    <Paxs>
      <Pax>
        <PaxID>PAX1</PaxID>
        <PTC>ADT</PTC>
      </Pax>
    </Paxs>
    <PricedOffer>
      <SelectedOffer>

<OfferRefID>QWASZXERDFCVTYGHBNUIJKNMF67D5F9GHR567SWER41SD458F9456FMDIRTN34DF</OfferRefID>

      <OwnerCode>6X</OwnerCode>
      <SelectedOfferItem>

<OfferItemRefID>QWASZXERDFCVTYGHBNUIJKNMF67D5F9GHR567SWER41SD458KJJSHGDHY545D</OfferItemRefID>

      </SelectedOfferItem>
    </SelectedOffer>
  </PricedOffer>
  <PaymentCardQualifiers>
    <Type>VI</Type>
    <IIN_Number>123456</IIN_Number>
  </PaymentCardQualifiers>
</Request>
</OfferPriceRQ>
```

5.4.4 Reply

```
<OfferPriceRS
xsi:schemaLocation="http://www.iata.org/IATA/2015/00/2018.1/OfferPriceRS
OfferPriceRS.xsd" xmlns:n1="http://www.altova.com/samplexml/other-namespace"
xmlns:k="http://www.iata.org/IATA/2015/00/2018.1/OfferPriceRS"
xmlns:xsi="http://www.w3.org/2001/XMLSchema-instance">
  <Response>
    <DataLists>
      <BaggageAllowanceList>
        <BaggageAllowance>
          <BaggageAllowanceID>FBA1</BaggageAllowanceID>
          <TypeCode>CheckedBag</TypeCode>
          <PieceAllowance>

          <ApplicablePartyText>Traveler</ApplicablePartyText>
          <TotalQty>1</TotalQty>
          <PieceDimensionAllowance>
            <Qty>1</Qty>
```

```

        </PieceDimensionAllowance>
    </PieceAllowance>
</BaggageAllowance>
</BaggageAllowanceList>
<PaxJourneyList>
    <PaxJourney>
        <PaxJourneyID>FLT1</PaxJourneyID>
        <PaxSegmentRefID>SEG1</PaxSegmentRefID>
    </PaxJourney>
    <PaxJourney>
        <PaxJourneyID>FLT2</PaxJourneyID>
        <PaxSegmentRefID>SEG2</PaxSegmentRefID>
    </PaxJourney>
</PaxJourneyList>
<PaxList>
    <Pax>
        <PaxID>PAX1</PaxID>
        <PTC>ADT</PTC>
    </Pax>
</PaxList>
<PaxSegmentList>
    <PaxSegment>
        <PaxSegmentID>SEG1</PaxSegmentID>
        <Dep>
            <IATA_LocationCode>LHR</IATA_LocationCode>
            <AircraftScheduledDateTime>2001-09-
30T09:30:47Z</AircraftScheduledDateTime>
        </Dep>
        <Arrival>
            <IATA_LocationCode>JFK</IATA_LocationCode>
            <AircraftScheduledDateTime>2001-09-
30T19:30:47Z</AircraftScheduledDateTime>
        </Arrival>
        <MarketingCarrierInfo>
            <CarrierDesigCode>6X</CarrierDesigCode>

            <MarketingCarrierFlightNumberText>690</MarketingCarrierFlightNumberText>

            <OperationalSuffixText>a</OperationalSuffixText>

        </MarketingCarrierInfo>
    </PaxSegment>
    <PaxSegment>
        <PaxSegmentID>SEG2</PaxSegmentID>
        <Dep>
            <IATA_LocationCode>JFK</IATA_LocationCode>
            <AircraftScheduledDateTime>2001-10-
30T09:30:47Z</AircraftScheduledDateTime>
        </Dep>
        <Arrival>
            <IATA_LocationCode>LHR</IATA_LocationCode>
            <AircraftScheduledDateTime>2001-10-
30T19:30:47Z</AircraftScheduledDateTime>
        </Arrival>
        <MarketingCarrierInfo>
            <CarrierDesigCode>6X</CarrierDesigCode>

            <MarketingCarrierFlightNumberText>700</MarketingCarrierFlightNumberText>

            <OperationalSuffixText>a</OperationalSuffixText>

        </MarketingCarrierInfo>
    </PaxSegment>
</PaxSegmentList>
</DataLists>
<PricedOffer>

```

```

        <Offer>
          <OfferID>QWASZXERDFCVTYGHBNUIJKNMF67D5F9GHR567SWER41SD458F9456FMDIRTN34DF</
OfferID>
              <OwnerCode>6X</OwnerCode>
              <OfferItem>
                <OfferItemID>QWASZXERDFCVTYGHBNUIJKNMF67D5F9GHR567SWER41SD458KJJSHGDHY545D<
/OfferItemID>
                  <FareDetail>
                    <PassengerRefs>PAX1</PassengerRefs>
                    <Price>
                      <TotalAmount>
                        <DetailCurrencyPrice>
                          <Total>100.74</Total>
                        </DetailCurrencyPrice>
                      </TotalAmount>
                      <BaseAmount>0</BaseAmount>
                      <Taxes>
                        <Total>101.01</Total>
                        <Breakdown>
                          <Tax>
                            <Amount
Code="EUR">96.00</Amount>
                            <Nation>YR</Nation>
                            <TaxCode>VB</TaxCode>
                            </Tax>
                          <Tax>
                            <Amount
Code="EUR">5.01</Amount>
                            <Nation>DQ</Nation>
                            <TaxCode>AP</TaxCode>
                            </Tax>
                        </Breakdown>
                      </Taxes>
                    </Price>
                  </FareDetail>
                <Price>
                  <TotalAmount>100.74</TotalAmount>
                </Price>
              </OfferItem>
            </Offer>
          </PricedOffer>
        </Response>
      </OfferPriceRS>

```

5.5 OfferPrice for one adult and one child passenger requesting a one-way flight

5.5.1 Use Case Description

A *OfferPriceRQ* is sent for one adult and one child passengers requesting a price for an offer. The offer contains one flight, no included or chargeable services. The passengers are anonymous. Different fare conditions apply to each passenger. Payment card information are sent in input and they have no impact on the price of the offer.

5.5.2 Preconditions

- *AirShopping* was previously run and an offer was stored in the system.
- The offer is valid.

5.5.3 Query

```
<OfferPriceRQ Version="String" xsi:schemaLocation="http://www.iata.org/IATA/EDIST
OfferPriceRQ.xsd" xmlns="http://www.iata.org/IATA/EDIST"
xmlns:xsi="http://www.w3.org/2001/XMLSchema-instance">
  <Document/>
  <Party>
    <Sender>
      <TravelAgency>
        <AgencyID>OfficeID</AgencyID>
      </TravelAgency>
    </Sender>
  </Party>
  <Request>
    <Paxs>
      <Pax>
        <PaxID>PAX1</PaxID>
        <PTC>ADT</PTC>
      </Pax>
      <Pax>
        <PaxID>PAX2</PaxID>
        <PTC>CHD</PTC>
      </Pax>
    </Paxs>
    <PricedOffer>
      <SelectedOffer>

<OfferRefID>QWASZXERDFCVTYGHBNUIJKNMF67D5F9GHR567SWER41SD458F9456FMDIRTN34DF</OfferRefID>
      <OwnerCode>6X</OwnerCode>
      <SelectedOfferItem>

<OfferItemRefID>QWASZXERDFCVTYGHBNUIJKNMF67D5F9GHR567SWER41SD458KJJSHGDHY545D</OfferItemRefID>
      </SelectedOfferItem>
    </SelectedOffer>
  </PricedOffer>
  <PaymentCardQualifiers>
    <Type>VI</Type>
    <IIN_Number>123456</IIN_Number>
  </PaymentCardQualifiers>
</Request>
</OfferPriceRQ>
```

5.5.4 Reply

```
<OfferPriceRS
xsi:schemaLocation="http://www.iata.org/IATA/2015/00/2018.1/OfferPriceRS
OfferPriceRS.xsd" xmlns:n1="http://www.altova.com/samplexml/other-namespace"
xmlns:k="http://www.iata.org/IATA/2015/00/2018.1/OfferPriceRS"
xmlns:xsi="http://www.w3.org/2001/XMLSchema-instance">
  <Response>
    <DataLists>
      <BaggageAllowanceList>
```

```

        <BaggageAllowance>
            <BaggageAllowanceID>FBA1</BaggageAllowanceID>
            <TypeCode>CheckedBag</TypeCode>
            <PieceAllowance>

<ApplicablePartyText>Traveler</ApplicablePartyText>
            <TotalQty>1</TotalQty>
            <PieceDimensionAllowance>
                <Qty>1</Qty>
            </PieceDimensionAllowance>
        </PieceAllowance>
    </BaggageAllowance>
</BaggageAllowanceList>
<PaxJourneyList>
    <PaxJourney>
        <PaxJourneyID>FLT1</PaxJourneyID>
        <PaxSegmentRefID>SEG1</PaxSegmentRefID>
    </PaxJourney>
</PaxJourneyList>
<PaxList>
    <Pax>
        <PaxID>PAX1</PaxID>
        <PTC>ADT</PTC>
    </Pax>
    <Pax>
        <PaxID>PAX2</PaxID>
        <PTC>CHD</PTC>
    </Pax>
</PaxList>
<PaxSegmentList>
    <PaxSegment>
        <PaxSegmentID>SEG1</PaxSegmentID>
        <Dep>
            <IATA_LocationCode>LHR</IATA_LocationCode>
            <AircraftScheduledDateTime>2001-09-
30T09:30:47Z</AircraftScheduledDateTime>
        </Dep>
        <Arrival>
            <IATA_LocationCode>JFK</IATA_LocationCode>
            <AircraftScheduledDateTime>2001-09-
30T19:30:47Z</AircraftScheduledDateTime>
        </Arrival>
        <MarketingCarrierInfo>
            <CarrierDesigCode>6X</CarrierDesigCode>

<MarketingCarrierFlightNumberText>690</MarketingCarrierFlightNumberText>

<OperationalSuffixText>a</OperationalSuffixText>

        </MarketingCarrierInfo>
    </PaxSegment>
</PaxSegmentList>
</DataLists>
<PricedOffer>
    <Offer>

        <OfferID>QWASZXERDFCVTYGHBNUJKNMF67D5F9GHR567SWER41SD458F9456FMDIRTN34DF</
OfferID>

            <OwnerCode>6X</OwnerCode>
            <OfferItem>

                <OfferItemID>QWASZXERDFCVTYGHBNUJKNMF67D5F9GHR567SWER41SD458KJJSBGDHY545D<
/OfferItemID>

                    <FareDetail>
                        <PassengerRefs>PAX1</PassengerRefs>
                        <Price>

```

```

                                <TotalAmount>
                                    <DetailCurrencyPrice>
                                        <Total>100.74</Total>
                                    </DetailCurrencyPrice>
                                </TotalAmount>
                                <BaseAmount>0</BaseAmount>
                                <Taxes>
                                    <Total>101.01</Total>
                                    <Breakdown>
                                        <Tax>
                                            <Amount
Code="EUR">96.00</Amount>
                                <Nation>YR</Nation>
                                <TaxCode>VB</TaxCode>
                                            </Tax>
                                            <Tax>
                                                <Amount
Code="EUR">5.01</Amount>
                                <Nation>DQ</Nation>
                                <TaxCode>AP</TaxCode>
                                            </Tax>
                                                </Breakdown>
                                            </Taxes>
                                        </Price>
                                    </FareDetail>
                                <FareDetail>
                                    <PassengerRefs>PAX2</PassengerRefs>
                                    <Price>
                                        <TotalAmount>
                                            <DetailCurrencyPrice>
                                                <Total>100.74</Total>
                                            </DetailCurrencyPrice>
                                        </TotalAmount>
                                        <BaseAmount>0</BaseAmount>
                                        <Taxes>
                                            <Total>101.01</Total>
                                            <Breakdown>
                                                <Tax>
                                                    <Amount
Code="EUR">96.00</Amount>
                                <Nation>YR</Nation>
                                <TaxCode>VB</TaxCode>
                                            </Tax>
                                            <Tax>
                                                <Amount
Code="EUR">5.01</Amount>
                                <Nation>DQ</Nation>
                                <TaxCode>AP</TaxCode>
                                            </Tax>
                                                </Breakdown>
                                            </Taxes>
                                        </Price>
                                    </FareDetail>
                                <Price>
                                    <TotalAmount>100.74</TotalAmount>
                                </Price>

```

```

                </OfferItem>
            </Offer>
        </PricedOffer>
    </Response>
</OfferPriceRS>

```

5.6 OfferPrice for one adult requesting a one-way flight, one service is included in the flight fare

5.6.1 Use Case Description

A *OfferPriceRQ* is sent for one adult passenger requesting a price for an offer. The offer contains one flight, one service included in the fare and no chargeable services. The passenger is anonymous. Payment card information are sent in input and they have no impact on the price of the offer.

5.6.2 Preconditions

- *AirShopping* was previously run and an offer was stored in the system.
- The offer is valid.

5.6.3 Query

Same as Example 5.1

```

<OfferPriceRQ Version="String" xsi:schemaLocation="http://www.iata.org/IATA/EDIST
OfferPriceRQ.xsd" xmlns="http://www.iata.org/IATA/EDIST"
xmlns:xsi="http://www.w3.org/2001/XMLSchema-instance">
    <Document/>
    <Party>
        <Sender>
            <TravelAgency>
                <AgencyID>OfficeID</AgencyID>
            </TravelAgency>
        </Sender>
    </Party>
    <Request>
        <Paxs>
            <Pax>
                <PaxID>PAX1</PaxID>
                <PTC>ADT</PTC>
            </Pax>
        </Paxs>
        <PricedOffer>
            <SelectedOffer>

<OfferRefID>QWASZXERDFCVTYGHBNUIJKNMF67D5F9GHR567SWER41SD458F9456FMDIRTN34DF</OfferRefID>

                <OwnerCode>6X</OwnerCode>
                <SelectedOfferItem>

<OfferItemRefID>QWASZXERDFCVTYGHBNUIJKNMF67D5F9GHR567SWER41SD458KJJSHGDHY545D</OfferItemRefID>

                    </SelectedOfferItem>
                </SelectedOffer>
            </PricedOffer>
            <PaymentCardQualifiers>
                <Type>VI</Type>
                <IIN_Number>123456</IIN_Number>
            </PaymentCardQualifiers>
        </Request>
    </OfferPriceRQ>

```



```

    </PaymentCardQualifiers>
  </Request>
</OfferPriceRQ>

```

5.6.4 Reply

```

<OfferPriceRS
xsi:schemaLocation="http://www.iata.org/IATA/2015/00/2018.1/OfferPriceRS
OfferPriceRS.xsd" xmlns:n1="http://www.altova.com/samplexml/other-namespace"
xmlns:k="http://www.iata.org/IATA/2015/00/2018.1/OfferPriceRS"
xmlns:xsi="http://www.w3.org/2001/XMLSchema-instance">
  <Response>
    <DataLists>
      <BaggageAllowanceList>
        <BaggageAllowance>
          <BaggageAllowanceID>FBA1</BaggageAllowanceID>
          <TypeCode>CheckedBag</TypeCode>
          <PieceAllowance>

          <ApplicablePartyText>Traveler</ApplicablePartyText>
          <TotalQty>1</TotalQty>
          <PieceDimensionAllowance>
            <Qty>1</Qty>
          </PieceDimensionAllowance>
        </BaggageAllowance>
      </BaggageAllowanceList>
      <PaxJourneyList>
        <PaxJourney>
          <PaxJourneyID>FLT1</PaxJourneyID>
          <PaxSegmentRefID>SEG1</PaxSegmentRefID>
        </PaxJourney>
        <PaxJourney>
          <PaxJourneyID>FLT2</PaxJourneyID>
          <PaxSegmentRefID>SEG2</PaxSegmentRefID>
        </PaxJourney>
      </PaxJourneyList>
      <PaxList>
        <Pax>
          <PaxID>PAX1</PaxID>
          <PTC>ADT</PTC>
        </Pax>
      </PaxList>
      <PaxSegmentList>
        <PaxSegment>
          <PaxSegmentID>SEG1</PaxSegmentID>
          <Dep>
            <IATA_LocationCode>LHR</IATA_LocationCode>
            <AircraftScheduledDateTime>2001-09-
30T09:30:47Z</AircraftScheduledDateTime>
          </Dep>
          <Arrival>
            <IATA_LocationCode>JFK</IATA_LocationCode>
            <AircraftScheduledDateTime>2001-09-
30T19:30:47Z</AircraftScheduledDateTime>
          </Arrival>
          <MarketingCarrierInfo>
            <CarrierDesigCode>6X</CarrierDesigCode>

            <MarketingCarrierFlightNumberText>690</MarketingCarrierFlightNumberText>

            <OperationalSuffixText>a</OperationalSuffixText>

```

```

        </MarketingCarrierInfo>
    </PaxSegment>
    <PaxSegment>
        <PaxSegmentID>SEG2</PaxSegmentID>
        <Dep>
            <IATA_LocationCode>JFK</IATA_LocationCode>
            <AircraftScheduledDateTime>2001-10-
30T09:30:47Z</AircraftScheduledDateTime>
        </Dep>
        <Arrival>
            <IATA_LocationCode>LHR</IATA_LocationCode>
            <AircraftScheduledDateTime>2001-10-
30T19:30:47Z</AircraftScheduledDateTime>
        </Arrival>
        <MarketingCarrierInfo>
            <CarrierDesigCode>6X</CarrierDesigCode>

    <MarketingCarrierFlightNumberText>700</MarketingCarrierFlightNumberText>

    <OperationalSuffixText>a</OperationalSuffixText>

        </MarketingCarrierInfo>
    </PaxSegment>
</PaxSegmentList>
<ServiceDefinitionList>
    <ServiceDefinition>
        <ServiceDefinitionID>SRV1</ServiceDefinitionID>
        <OwnerCode>6X</OwnerCode>
        <Name>PRE RESERVED SEAT ASSIGNMENT</Name>
        <ServiceCode>SRV1</ServiceCode>
        <ReasonForIssuanceCode>A</ReasonForIssuanceCode>

    <ReasonForIssuanceSubCode>0B5</ReasonForIssuanceSubCode>
        <Description>
            <DescID>DESC1</DescID>
            <DescText>PRE RESERVED SEAT
ASSIGNMENT</DescText>
        </Description>
    </ServiceDefinition>
</ServiceDefinitionList>
</DataLists>
<PricedOffer>
    <Offer>

        <OfferID>QWASZXERDFCVTYGHBNUIJKNMF67D5F9GHR567SWER41SD458F9456FMDIRTN34DF</
OfferID>

            <OwnerCode>6X</OwnerCode>
            <OfferItem>

                <OfferItemID>QWASZXERDFCVTYGHBNUIJKNMF67D5F9GHR567SWER41SD458KJJSBGDHY545D<
/OfferItemID>

                    <FareDetail>
                        <PassengerRefs>PAX1</PassengerRefs>
                        <Price>
                            <TotalAmount>
                                <DetailCurrencyPrice>
                                    <Total>100.74</Total>
                                </DetailCurrencyPrice>
                            </TotalAmount>
                            <BaseAmount>0</BaseAmount>
                            <Taxes>
                                <Total>101.01</Total>
                                <Breakdown>
                                    <Tax>
                                        <Amount>

```

```

Code="EUR">96.00</Amount>
    <Nation>YR</Nation>
    <TaxCode>VB</TaxCode>
                                                    </Tax>
                                                    <Tax>
<Amount
Code="EUR">5.01</Amount>
    <Nation>DQ</Nation>
    <TaxCode>AP</TaxCode>
                                                    </Tax>
                                                    </Breakdown>
                                                    </Taxes>
                                                    </Price>
</FareDetail>
<Service>
    <ServiceID>SRV1</ServiceID>
    <PaxRefID>PAX1</PaxRefID>
    <ServiceAssociations>
        <ServiceDefinitionRef>
<ServiceDefinitionRefID>SRV1</ServiceDefinitionRefID>
<PaxSegmentRefID>SEG1</PaxSegmentRefID>
                                                    </ServiceDefinitionRef>
                                                    </ServiceAssociations>
</Service>
<Price>
    <TotalAmount>100.74</TotalAmount>
</Price>
</OfferItem>
</Offer>
</PricedOffer>
</Response>
</OfferPriceRS>

```

5.7 OfferPrice for one adult requesting a one-way flight, one service is available at a charge

5.7.1 Use Case Description

A *OfferPriceRQ* is sent for one adult passenger requesting a price for an offer. The offer contains one flight, and one chargeable service. In order for the chargeable service to be returned in *OfferPriceRS*, its offer item must be requested in input for the passenger. The passenger is anonymous. Payment card information are sent in input and they have no impact on the price of the offer.

5.7.2 Preconditions

- *AirShopping* was previously run and an offer was stored in the system.
- The offer is valid.

5.7.3 Query

```

<OfferPriceRQ Version="String" xsi:schemaLocation="http://www.iata.org/IATA/EDIST
OfferPriceRQ.xsd" xmlns="http://www.iata.org/IATA/EDIST"
xmlns:xsi="http://www.w3.org/2001/XMLSchema-instance">
  <Document/>
  <Party>
    <Sender>
      <TravelAgency>
        <AgencyID>OfficeID</AgencyID>
      </TravelAgency>
    </Sender>
  </Party>
  <Request>
    <Paxs>
      <Pax>
        <PaxID>PAX1</PaxID>
        <PTC>ADT</PTC>
      </Pax>
    </Paxs>
    <PricedOffer>
      <SelectedOffer>
        <OfferRefID>SULL-15212098829096357717-1</OfferRefID>
        <OwnerCode>6X</OwnerCode>
        <SelectedOfferItem>
          <OfferItemRefID>SULL-15212098829096357717-1-1</OfferItemRefID>
          <PaxRefID>PAX1</PaxRefID>
        </SelectedOfferItem>
        <SelectedOfferItem>
          <OfferItemRefID>SULL-15212098829096357717-1-1</OfferItemRefID>
          <PaxRefID>PAX1</PaxRefID>
        </SelectedOfferItem>
      </SelectedOffer>
    </PricedOffer>
    <PaymentCardQualifiers>
      <Type>VI</Type>
      <IIN_Number>123456</IIN_Number>
    </PaymentCardQualifiers>
  </Request>
</OfferPriceRQ>

```

5.7.4 Reply

```

<OfferPriceRS
xsi:schemaLocation="http://www.iata.org/IATA/2015/00/2018.1/OfferPriceRS
OfferPriceRS.xsd" xmlns:n1="http://www.altova.com/samplexml/other-namespace"
xmlns:k="http://www.iata.org/IATA/2015/00/2018.1/OfferPriceRS"
xmlns:xsi="http://www.w3.org/2001/XMLSchema-instance">
  <Response>
    <DataLists>
      <BaggageAllowanceList>
        <BaggageAllowance>
          <BaggageAllowanceID>FBA1</BaggageAllowanceID>
          <TypeCode>CheckedBag</TypeCode>
          <PieceAllowance>
            <ApplicablePartyText>Traveler</ApplicablePartyText>
            <TotalQty>1</TotalQty>
            <PieceDimensionAllowance>
              <Qty>1</Qty>
            </PieceDimensionAllowance>
          </PieceAllowance>
        </BaggageAllowance>
      </BaggageAllowanceList>
      <PaxJourneyList>

```

```

        <PaxJourney>
            <PaxJourneyID>FLT1</PaxJourneyID>
            <PaxSegmentRefID>SEG1</PaxSegmentRefID>
        </PaxJourney>
        <PaxJourney>
            <PaxJourneyID>FLT2</PaxJourneyID>
            <PaxSegmentRefID>SEG2</PaxSegmentRefID>
        </PaxJourney>
    </PaxJourneyList>
    <PaxList>
        <Pax>
            <PaxID>PAX1</PaxID>
            <PTC>ADT</PTC>
        </Pax>
    </PaxList>
    <PaxSegmentList>
        <PaxSegment>
            <PaxSegmentID>SEG1</PaxSegmentID>
            <Dep>
                <IATA_LocationCode>LHR</IATA_LocationCode>
                <AircraftScheduledDateTime>2001-09-
30T09:30:47Z</AircraftScheduledDateTime>
            </Dep>
            <Arrival>
                <IATA_LocationCode>JFK</IATA_LocationCode>
                <AircraftScheduledDateTime>2001-09-
30T19:30:47Z</AircraftScheduledDateTime>
            </Arrival>
            <MarketingCarrierInfo>
                <CarrierDesigCode>6X</CarrierDesigCode>

                <MarketingCarrierFlightNumberText>690</MarketingCarrierFlightNumberText>

                <OperationalSuffixText>a</OperationalSuffixText>

            </MarketingCarrierInfo>
        </PaxSegment>
        <PaxSegment>
            <PaxSegmentID>SEG2</PaxSegmentID>
            <Dep>
                <IATA_LocationCode>JFK</IATA_LocationCode>
                <AircraftScheduledDateTime>2001-10-
30T09:30:47Z</AircraftScheduledDateTime>
            </Dep>
            <Arrival>
                <IATA_LocationCode>LHR</IATA_LocationCode>
                <AircraftScheduledDateTime>2001-10-
30T19:30:47Z</AircraftScheduledDateTime>
            </Arrival>
            <MarketingCarrierInfo>
                <CarrierDesigCode>6X</CarrierDesigCode>

                <MarketingCarrierFlightNumberText>700</MarketingCarrierFlightNumberText>

                <OperationalSuffixText>a</OperationalSuffixText>

            </MarketingCarrierInfo>
        </PaxSegment>
    </PaxSegmentList>
    <ServiceDefinitionList>
        <ServiceDefinition>
            <ServiceDefinitionID>SRV1</ServiceDefinitionID>
            <OwnerCode>6X</OwnerCode>
            <Name>PRE PAID BAGGAGE</Name>
            <ServiceCode>SRV1</ServiceCode>
            <ReasonForIssuanceCode>C</ReasonForIssuanceCode>
        </ServiceDefinition>
    </ServiceDefinitionList>

```

```

    <ReasonForIssuanceSubCode>0AA</ReasonForIssuanceSubCode>
      <Description>
        <DescID>DESC1</DescID>
        <DescText>PRE PAID BAGGAGE</DescText>
      </Description>
    </ServiceDefinition>
  </ServiceDefinitionList>
</DataLists>
<PricedOffer>
  <Offer>

    <OfferID>QWASZXERDFCVTYGHBNUIJKNMF67D5F9GHR567SWER41SD458F9456FMDIRTN34DF</
OfferID>

      <OwnerCode>6X</OwnerCode>
      <OfferItem>

        <OfferItemID>QWASZXERDFCVTYGHBNUIJKNMF67D5F9GHR567SWER41SD458KJJSHGDHY545D<
/OfferItemID>

          <FareDetail>
            <PassengerRefs>PAX1</PassengerRefs>
            <Price>
              <TotalAmount>
                <DetailCurrencyPrice>
                  <Total>100.74</Total>
                </DetailCurrencyPrice>
              </TotalAmount>
              <BaseAmount>0</BaseAmount>
              <Taxes>
                <Total>101.01</Total>
                <Breakdown>
                  <Tax>
                    <Amount
Code="EUR">96.00</Amount>

                    <Nation>YR</Nation>

                    <TaxCode>VB</TaxCode>

                    </Tax>
                  <Tax>
                    <Amount
Code="EUR">5.01</Amount>

                    <Nation>DQ</Nation>

                    <TaxCode>AP</TaxCode>

                    </Tax>
                </Breakdown>
              </Taxes>
            </Price>
          </FareDetail>
        <Service>
          <ServiceID>SRV1</ServiceID>
          <PaxRefID>PAX1</PaxRefID>
          <ServiceAssociations>
            <ServiceDefinitionRef>

<ServiceDefinitionRefID>SRV1</ServiceDefinitionRefID>

          <PaxSegmentRefID>SEG1</PaxSegmentRefID>

            </ServiceDefinitionRef>
          </ServiceAssociations>
        </Service>
      <Price>
        <TotalAmount>100.74</TotalAmount>
      </Price>
    </OfferItem>
  </Offer>
</PricedOffer>
</DataLists>

```

```

                </Price>
            </OfferItem>
        </Offer>
    </PricedOffer>
</Response>
</OfferPriceRS>

```

5.8 OfferPrice for one adult and one infant passenger requesting a one-way flight

5.8.1 Use Case Description

A *OfferPriceRQ* is sent for one adult and one infant passengers requesting a price for an offer. The offer contains one flight, no included or chargeable services. The passengers are anonymous. Different fare conditions apply to each passenger. Payment card information are sent in input and they have no impact on the price of the offer.

5.8.2 Preconditions

- *AirShopping* was previously run and an offer was stored in the system.
- The offer is valid.

5.8.3 Query

```

<OfferPriceRQ Version="String" xsi:schemaLocation="http://www.iata.org/IATA/EDIST
OfferPriceRQ.xsd" xmlns="http://www.iata.org/IATA/EDIST"
xmlns:xsi="http://www.w3.org/2001/XMLSchema-instance">
  <Document/>
  <Party>
    <Sender>
      <TravelAgency>
        <AgencyID>OfficeID</AgencyID>
      </TravelAgency>
    </Sender>
  </Party>
  <Request>
    <Paxs>
      <Pax>
        <PaxID>PAX1</PaxID>
        <PTC>ADT</PTC>
      </Pax>
      <Pax>
        <PaxID>PAX2</PaxID>
        <PTC>INF</PTC>
      </Pax>
    </Paxs>
    <PricedOffer>
      <SelectedOffer>
        <OfferRefID>SULL-15212098829096357717-1</OfferRefID>
        <OwnerCode>6X</OwnerCode>
        <SelectedOfferItem>
          <OfferItemRefID>SULL-15212098829096357717-1-1</OfferItemRefID>
          <PaxRefID>PAX1</PaxRefID>
        </SelectedOfferItem>
        <SelectedOfferItem>
          <OfferItemRefID>SULL-15212098829096357717-1-1</OfferItemRefID>
          <PaxRefID>PAX2</PaxRefID>
        </SelectedOfferItem>
      </SelectedOffer>
    </PricedOffer>
  </Request>
</OfferPriceRQ>

```

```

        </SelectedOffer>
    </PricedOffer>
    <PaymentCardQualifiers>
        <Type>VI</Type>
        <IIN_Number>123456</IIN_Number>
    </PaymentCardQualifiers>
</Request>
</OfferPriceRQ>

```

5.8.4 Reply

```

<OfferPriceRS
xsi:schemaLocation="http://www.iata.org/IATA/2015/00/2018.1/OfferPriceRS
OfferPriceRS.xsd" xmlns:n1="http://www.altova.com/samplexml/other-namespaces"
xmlns:k="http://www.iata.org/IATA/2015/00/2018.1/OfferPriceRS"
xmlns:xsi="http://www.w3.org/2001/XMLSchema-instance">
    <Response>
        <DataLists>
            <BaggageAllowanceList>
                <BaggageAllowance>
                    <BaggageAllowanceID>FBA1</BaggageAllowanceID>
                    <TypeCode>CheckedBag</TypeCode>
                    <PieceAllowance>
                        <ApplicablePartyText>Traveler</ApplicablePartyText>
                        <TotalQty>1</TotalQty>
                        <PieceDimensionAllowance>
                            <Qty>1</Qty>
                        </PieceDimensionAllowance>
                    </PieceAllowance>
                </BaggageAllowance>
            </BaggageAllowanceList>
            <PaxJourneyList>
                <PaxJourney>
                    <PaxJourneyID>FLT1</PaxJourneyID>
                    <PaxSegmentRefID>SEG1</PaxSegmentRefID>
                </PaxJourney>
            </PaxJourneyList>
            <PaxList>
                <Pax>
                    <PaxID>PAX1</PaxID>
                    <PTC>ADT</PTC>
                </Pax>
                <Pax>
                    <PaxID>PAX2</PaxID>
                    <PTC>INF</PTC>
                </Pax>
            </PaxList>
            <PaxSegmentList>
                <PaxSegment>
                    <PaxSegmentID>SEG1</PaxSegmentID>
                    <Dep>
                        <IATA_LocationCode>LHR</IATA_LocationCode>
                        <AircraftScheduledDateTime>2001-09-
30T09:30:47Z</AircraftScheduledDateTime>
                    </Dep>
                    <Arrival>
                        <IATA_LocationCode>JFK</IATA_LocationCode>
                        <AircraftScheduledDateTime>2001-09-
30T19:30:47Z</AircraftScheduledDateTime>
                    </Arrival>
                    <MarketingCarrierInfo>
                        <CarrierDesigCode>6X</CarrierDesigCode>
                    </MarketingCarrierInfo>
                </PaxSegment>
            </PaxSegmentList>
        </DataLists>
    </Response>
</OfferPriceRS>

```



```

<MarketingCarrierFlightNumberText>690</MarketingCarrierFlightNumberText>

<OperationalSuffixText>a</OperationalSuffixText>

        </MarketingCarrierInfo>
    </PaxSegment>
    </PaxSegmentList>
</DataLists>
<PricedOffer>
    <Offer>

        <OfferID>QWASZXERDFCVTYGHBNUIJKNMF67D5F9GHR567SWER41SD458F9456FMDIRTN34DF</
OfferID>

                <OwnerCode>6X</OwnerCode>
                <OfferItem>

                        <OfferItemID>QWASZXERDFCVTYGHBNUIJKNMF67D5F9GHR567SWER41SD458KJJSHGDHY545D<
/OfferItemID>

                                <FareDetail>
                                        <PassengerRefs>PAX1</PassengerRefs>
                                        <Price>
                                                <TotalAmount>
                                                        <DetailCurrencyPrice>
                                                                <Total>100.74</Total>
                                                                </DetailCurrencyPrice>
                                                        </TotalAmount>
                                                        <BaseAmount>0</BaseAmount>
                                                        <Taxes>
                                                                <Total>101.01</Total>
                                                                <Breakdown>
                                                                        <Tax>
                                                                                <Amount
Code="EUR">96.00</Amount>

                                                                <Nation>YR</Nation>

                                                                <TaxCode>VB</TaxCode>

                                                                                </Tax>
                                                                                <Tax>
                                                                                        <Amount
Code="EUR">5.01</Amount>

                                                                <Nation>DQ</Nation>

                                                                <TaxCode>AP</TaxCode>

                                                                                </Tax>

                                                                </Breakdown>
                                                                </Taxes>
                                        </Price>
                                </FareDetail>
                                <FareDetail>
                                        <PassengerRefs>PAX2</PassengerRefs>
                                        <Price>
                                                <TotalAmount>
                                                        <DetailCurrencyPrice>
                                                                <Total>100.74</Total>
                                                                </DetailCurrencyPrice>
                                                        </TotalAmount>
                                                        <BaseAmount>0</BaseAmount>
                                                        <Taxes>
                                                                <Total>101.01</Total>
                                                                <Breakdown>
                                                                        <Tax>
                                                                                <Amount

```

```

Code="EUR">96.00</Amount>
    <Nation>YR</Nation>
    <TaxCode>VB</TaxCode>
                                                    </Tax>
                                                    <Tax>
<Amount
Code="EUR">5.01</Amount>
    <Nation>DQ</Nation>
    <TaxCode>AP</TaxCode>
                                                    </Tax>
                                                    </Breakdown>
                                                    </Taxes>
                                                    </Price>
</FareDetail>
<Service>
    <ServiceID>SRV1</ServiceID>
    <PaxRefID>PAX1</PaxRefID>
    <PaxRefID>PAX2</PaxRefID>
    <ServiceAssociations>
        <ServiceDefinitionRef>
<ServiceDefinitionRefID>SRV1</ServiceDefinitionRefID>
<PaxSegmentRefID>SEG1</PaxSegmentRefID>
                                                    </ServiceDefinitionRef>
                                                    </ServiceAssociations>
</Service>
<Price>
    <TotalAmount>100.74</TotalAmount>
</Price>
</OfferItem>
</Offer>
</PricedOffer>
</Response>
</OfferPriceRS>

```

5.9 OfferPrice for one adult with a Frequent Traveler account requesting a one-way flight

5.9.1 Use Case Description

A *OfferPriceRQ* is sent for one adult passenger requesting a price for an offer. The offer contains one flight, no included or chargeable services. The passenger is recognized and a frequent flyer account is used. Payment card information are sent in input and they have no impact on the price of the offer.

5.9.2 Preconditions

- *AirShopping* was previously run and an offer was stored in the system.
- The offer is valid.

5.9.3 Query

```

<OfferPriceRQ Version="String" xsi:schemaLocation="http://www.iata.org/IATA/EDIST
OfferPriceRQ.xsd" xmlns="http://www.iata.org/IATA/EDIST"
xmlns:xsi="http://www.w3.org/2001/XMLSchema-instance">
  <Document/>
  <Party>
    <Sender>
      <TravelAgencySender>
        <AgencyID>OfficeID</AgencyID>
      </TravelAgencySender>
    </Sender>
  </Party>
  <Request>
    <Paxs>
      <Pax>
        <PaxID>PAX1</PaxID>
        <PTC>ADT</PTC>
        <Individual>
          <Surname>Smith</Surname>
        </Individual>
        <LoyaltyProgramAccount>
          <ProgramName>YY</ProgramName>
          <AccountNumber>12345678</AccountNumber>
          <Carrier>
            <AirlineDesigCode>6X</AirlineDesigCode>
          </Carrier>
        </LoyaltyProgramAccount>
      </Pax>
    </Paxs>
    <PricedOffer>
      <SelectedOffer>
<OfferRefID>QWASZXERDFCVTYGHBNUIJKNMF67D5F9GHR567SWER41SD458F9456FMDIRTN34DF</OfferRefID>
        <OwnerCode>6X</OwnerCode>
        <SelectedOfferItem>
<OfferItemRefID>QWASZXERDFCVTYGHBNUIJKNMF67D5F9GHR567SWER41SD458KJJSHGDHY545D</OfferItemRefID>
          </SelectedOfferItem>
        </SelectedOffer>
      </PricedOffer>
      <ShoppingCriteria>
        <PaymentCardCriteria>
          <CardTypeCode>VI</CardTypeCode>
        </PaymentCardCriteria>
        <IssuerIdentificationNumber>123456</IssuerIdentificationNumber>
      </ShoppingCriteria>
    </Request>
  </OfferPriceRQ>

```

5.9.4 Reply

```

<OfferPriceRS
xsi:schemaLocation="http://www.iata.org/IATA/2015/00/2018.1/OfferPriceRS
OfferPriceRS.xsd" xmlns:n1="http://www.altova.com/samplexml/other-namespace"
xmlns:k="http://www.iata.org/IATA/2015/00/2018.1/OfferPriceRS"
xmlns:xsi="http://www.w3.org/2001/XMLSchema-instance">
  <Response>
    <DataLists>
      <BaggageAllowanceList>
        <BaggageAllowance>
          <BaggageAllowanceID>FBA1</BaggageAllowanceID>

```

```

        <TypeCode>CheckedBag</TypeCode>
        <PieceAllowance>
<ApplicablePartyText>Traveler</ApplicablePartyText>
            <TotalQty>1</TotalQty>
            <PieceDimensionAllowance>
                <Qty>1</Qty>
            </PieceDimensionAllowance>
            </PieceAllowance>
        </BaggageAllowance>
    </BaggageAllowanceList>
    <PaxJourneyList>
        <PaxJourney>
            <PaxJourneyID>FLT1</PaxJourneyID>
            <PaxSegmentRefID>SEG1</PaxSegmentRefID>
        </PaxJourney>
    </PaxJourneyList>
    <PaxList>
        <Pax>
            <PaxID>PAX1</PaxID>
            <PTC>ADT</PTC>
        </Pax>
    </PaxList>
    <PaxSegmentList>
        <PaxSegment>
            <PaxSegmentID>SEG1</PaxSegmentID>
            <Dep>
                <IATA_LocationCode>LHR</IATA_LocationCode>
                <AircraftScheduledDateTime>2001-09-
30T09:30:47Z</AircraftScheduledDateTime>
            </Dep>
            <Arrival>
                <IATA_LocationCode>JFK</IATA_LocationCode>
                <AircraftScheduledDateTime>2001-09-
30T19:30:47Z</AircraftScheduledDateTime>
            </Arrival>
            <MarketingCarrierInfo>
                <CarrierDesigCode>6X</CarrierDesigCode>
            </MarketingCarrierInfo>
            <MarketingCarrierFlightNumberText>690</MarketingCarrierFlightNumberText>
            <OperationalSuffixText>a</OperationalSuffixText>
        </PaxSegment>
    </PaxSegmentList>
</DataLists>
<PricedOffer>
    <Offer>
        <OfferID>QWASZXERDFCVTYGHBNUIJKNMF67D5F9GHR567SWER41SD458F9456FMDIRTN34DF</
OfferID>
            <OwnerCode>6X</OwnerCode>
            <OfferItem>
                <OfferItemID>QWASZXERDFCVTYGHBNUIJKNMF67D5F9GHR567SWER41SD458KJJSHGDHY545D<
/OfferItemID>
                    <FareDetail>
                        <PassengerRefs>PAX1</PassengerRefs>
                        <Price>
                            <TotalAmount>
                                <DetailCurrencyPrice>
                                    <Total>100.74</Total>
                                </DetailCurrencyPrice>
                            </TotalAmount>
                            <BaseAmount>0</BaseAmount>
                            <Taxes>

```

```

<Total>101.01</Total>
<Breakdown>
  <Tax>
    <Amount
Code="EUR">96.00</Amount>
    <Nation>YR</Nation>
    <TaxCode>VB</TaxCode>
  </Tax>
  <Tax>
    <Amount
Code="EUR">5.01</Amount>
    <Nation>DQ</Nation>
    <TaxCode>AP</TaxCode>
  </Tax>
</Breakdown>
</Taxes>
</Price>
</FareDetail>
<Price>
  <TotalAmount>100.74</TotalAmount>
</Price>
</OfferItem>
</Offer>
</PricedOffer>
</Response>
</OfferPriceRS>

```

6 Glossary

CC - Credit Card

FF - Frequent Flyer

FOP - Form Of Payment

FOID - Form Of Identification

FQTV - Frequent flyer code for accruing miles

MCO - Miscellaneous Charge Order

PNR - Passenger Name Record

PTC - Passenger Type Code

TST - Transitional Stored Ticket

RFIC - Reason For Issuance Code

RFISC - Reason for Issuance Sub-Code

SSR - Special Service Request

SVC - Manual Auxiliary Segment

TSM - Transitional Stored MCO

7 Legal disclaimer

This document, including all information contained herein and any attached or related documents, is strictly confidential and proprietary information of Amadeus and its respective affiliates, subsidiaries, members, vendors and/or suppliers (the “Confidential Information”) and is being shared with you for the sole and exclusive purpose of providing a functional solution overview between SQ and NDC consumer as part of Amadeus Altéa NDC.

This document is intended solely for information purposes. If you are not the intended recipient you are notified that disclosing, copying or distributing the contents of this document or information is strictly prohibited.

Any Amadeus intellectual property or other information contained in this document or relating to the solutions, any products or services described herein shall remain the sole and exclusive property of Amadeus or its licensees, as applicable. Nothing herein shall constitute a license, transfer or other grant of any rights in or to the information or intellectual property contained or referenced herein. Any solutions, products, services or company names that may be referred to in this presentation that are trademarks are herewith acknowledged.

Any disputes in connection with the breach of the above provisions shall be governed by and construed in accordance with English law and is submitted to the exclusive jurisdiction of the courts of London.

Any content within this document is subject to an agreement being entered into between the parties and will not be considered as binding until agreed and formalised by the parties under a definitive agreement.